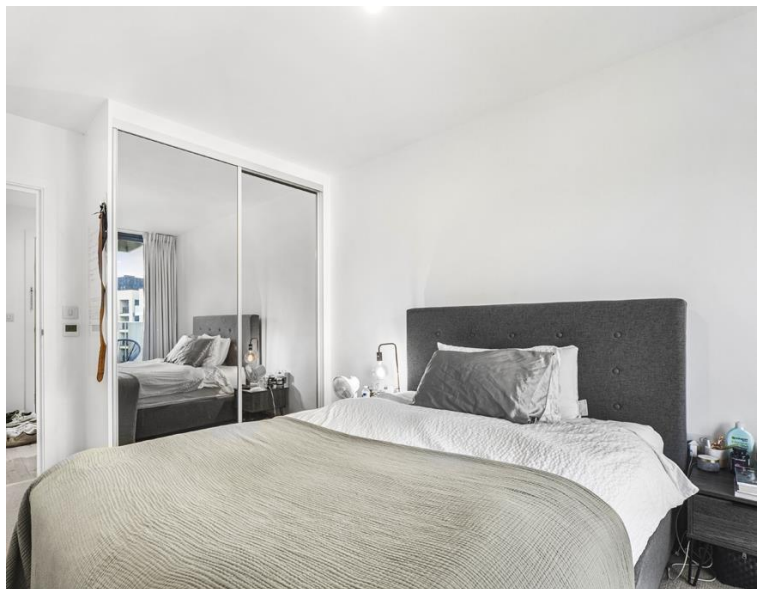


## Forrester Way, London E15

Asking price £465,000 Leasehold









## Description

This 582 sq ft one bedroom apartment in New Garden Quarter boasting a beautifully 2 acre landscaped garden square, private green spaces, concierge and residents gym.

Apartments finished to a high specification. Open plan living room and kitchen, high specification kitchens include handle-less fitted units, engineered stone worktops, glass splash backs and fully integrated appliances. Bathrooms and en-suite shower rooms offer bespoke cabinetry and ceramic tiling. Fitted wardrobes to master bedroom and under floor heating throughout.

Located next to Queen Elizabeth Park for Westfield and access to Stratford Underground station for easy access to Liverpool Street, Canary Wharf and Bank.

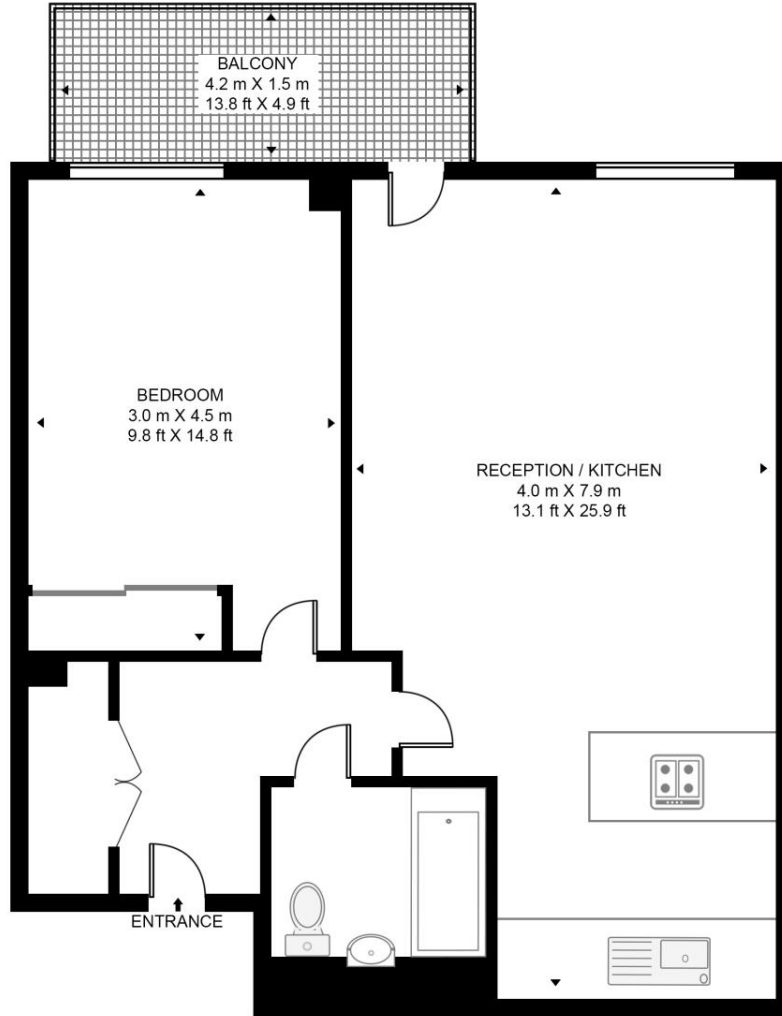
- One Bedroom
- One Bathroom
- Balcony
- Residential Gym
- 24 Hour Concierge
- Approx. 582 sq. ft ( 54.1 sq. m)
- 0.4 miles from Stratford Underground Station
- EPC: B
- Leasehold

# Floorplan

582 sq ft | 54 sq m

## MERCHANTS HOUSE

APPROXIMATE GROSS INTERNAL FLOOR AREA 582 SQ.FT (54.1 SQ.M)



FOURTH FLOOR



This floor plan has been defined by the RICS Code of Measurement. This floor plan and all others are for approximate representative purposes only and upon usage is agreed to as such by the client.  
WWW: [hdvirtualart.com](http://hdvirtualart.com) | TEL: 0203.974.1567 | EMAIL: [info@hdvirtualart.com](mailto:info@hdvirtualart.com)

Stratford  
5 Station Street,  
London E15 1DA  
+4420 3147 1500  
[Lettingsstratford@eu.jll.com](mailto:Lettingsstratford@eu.jll.com)

*Urban living, your way.*

[jll.co.uk/residential](http://jll.co.uk/residential)

© 2019 Jones Lang LaSalle IP, Inc. All rights reserved. All information contained herein is from sources deemed reliable; however, no representation or warranty is made to the accuracy thereof.

