

Montrose Court, London SW7

Price £2,800 per week - Furnished







Description

A stunning 3 bedroom penthouse apartment in this modern, fully portered building overlooking Hyde Park.

Situated on the 8th floor, this luxury penthouse property comprises 3 double bedrooms with fitted wardrobes, 3 en suite bath / shower rooms plus additional guest cloakroom, large reception room with wooden floors, separate dining and living areas, fully fitted kitchen, and a fantastic terrace running the length of the apartment that can be accessed from both the reception and master bedroom.

The property benefits from an on-site porter, is moments from Hyde Park and well situated for South Kensington and Knightsbridge, with South Kensington station approximately 0.5 miles away, and Knightsbridge station approximately 0.7 miles away.

As well as paying the rent, you may also be required to make some additional permitted payments. If your tenancy does not qualify as an AST, additional fees may apply. Please visit jll.co.uk/fees for details of fees which may be payable when renting a property.

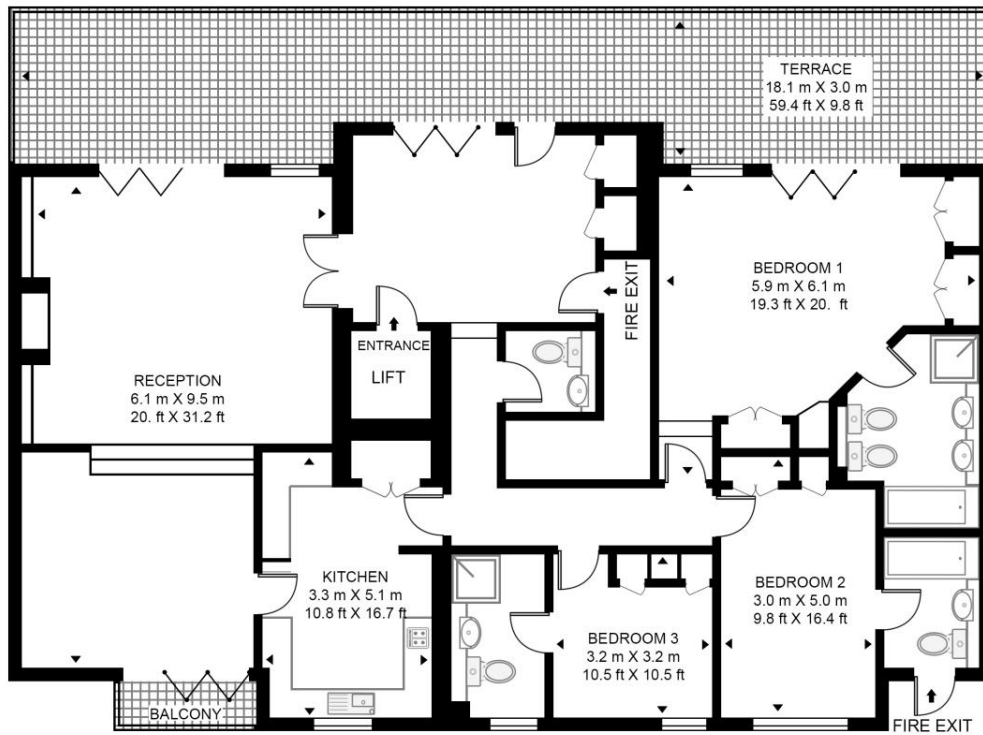
- 3 Bedrooms with en-suite bathrooms
- 1 Reception Room
- 1 Dining room
- Cloakroom
- Spacious kitchen
- Large terrace
- Balcony
- Direct lift access
- Furnished
- Eighth floor

Floorplan

sq ft | sq m

PENTHOUSE B, MONTROSE COURT

APPROXIMATE GROSS INTERNAL FLOOR AREA 1937 SQ.FT (180 SQ.M)



EIGHTH FLOOR



This floor plan has been defined by the RICS Code of Measurement. This floor plan and all others are for approximate representative purposes only and upon usage is agreed to as such by the client.
WWW: hdvirtualart.com | TEL: 0203.974.1567 | EMAIL: info@hdvirtualart.com

Knightsbridge
174 Brompton Road,
London SW3 1HP
+4420 7306 1600
lettingsknightsbridge@eu.jll.co

Urban living, your way.

jll.co.uk/residential

© 2019 Jones Lang LaSalle IP, Inc. All rights reserved. All information contained herein is from sources deemed reliable; however, no representation or warranty is made to the accuracy thereof.

