



Deals Gateway, London SE13

Guide price £400,000 Leasehold





Description

Representing a fantastic first purchase is this two bedroom purpose built apartment conveniently located for Deptford DLR station.

This is a spacious and light accommodation offers a large lounge with dining area and a fitted kitchen which opens onto a Juliet balcony. Two double bedrooms and a bathroom.

The property is beautifully presented throughout and is EWS1 compliant.

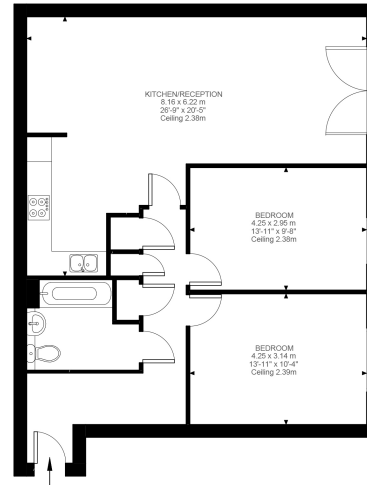
Early viewings are highly recommended.

- 2 Double bedrooms
- 1 Bathroom
- 2nd floor modern apartment
- Juliet balcony
- Approx. 875 sq ft (81.25 sq m)
- Beautifully presented throughout
- EWS1 Compliant
- EPC: C



Floorplan

875 sq ft | 81 sq m



Second Floor
875 ft²

Deals Gateway, SE13
Approximate Gross Internal Area
81.25 SQ.M / 875 SQ.FT

Illustration for identification purposes only. Not to scale.
Floor Plan Drawn According To RICS Guidelines.

Greenwich
22 College Approach,
London SE10 9HY
02088589986
lettingsgreenwich@eu.jll.com

Urban living, your way.

jll.co.uk/residential

© 2019 Jones Lang LaSalle IP, Inc. All rights reserved. All information contained herein is from sources deemed reliable; however, no representation or warranty is made to the accuracy thereof.

