



**NORFOLK HOUSE, BROOKMILL ROAD,
LONDON SE8**





This stunning first floor, one bedroom apartment is situated close to Deptford Bridge DLR station as well as an 8-minute walk to New Cross Station with great connections to London's City, Westend and Canary Wharf.

This fantastic property benefits from a bright & airy open plan living space with access onto a balcony, separate contemporary kitchen with integrated appliances, spacious entrance hall with additional storage cupboards, large double bedroom with built in wardrobe and a contemporary bathroom.

The property is finished to a high standard and is available with no onward chain. Early viewings are highly recommended.

- 1 Bedroom
- 1 Bathroom
- Balcony
- 1st Floor modern apartment
- Beautifully presented throughout
- Close to Deptford DLR and mainline station
- No onward chain
- EPC: B

PRICE

OIEO £325,000

GROSS INTERNAL AREA

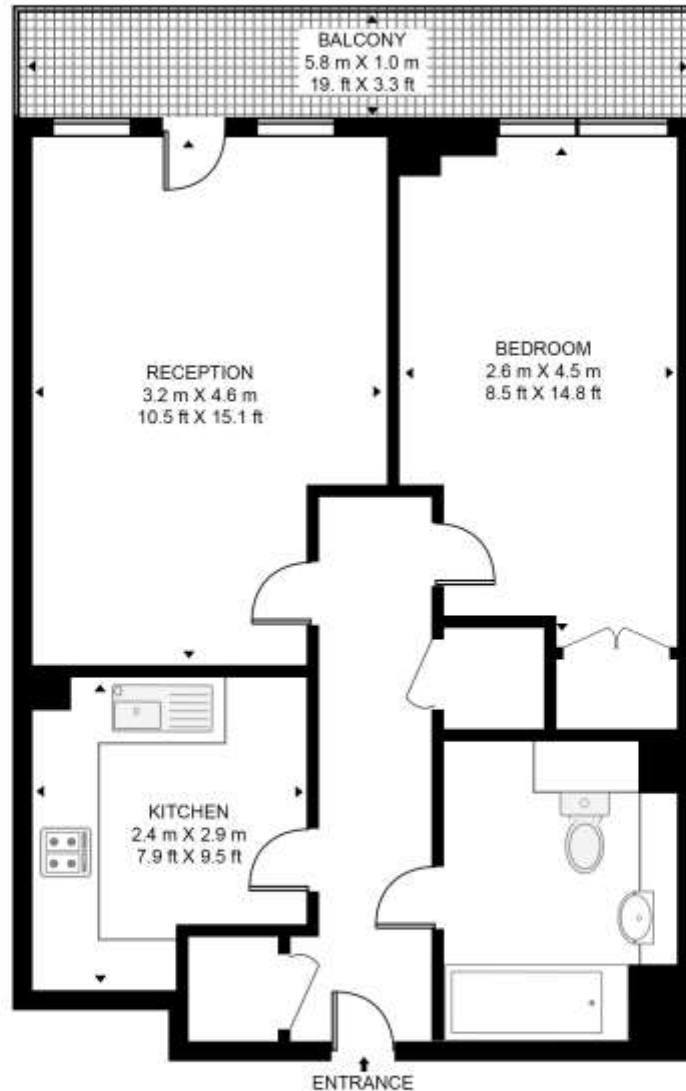
488 sq ft (44.5 sq m)

LOCAL AUTHORITY

London borough of Lewisham

NORFOLK HOUSE

APPROXIMATE GROSS INTERNAL FLOOR AREA 488 SQ.FT (44.5 SQ.M)



FIRST FLOOR



HDVA

This floor plan has been defined by the RICS Code of Measurement. This floor plan and all others are for approximate representative purposes only and upon usage is agreed to as such by the client.

WWW: hdvirtualart.com | TEL: 0203.974.1567 | EMAIL: info@hdvirtualart.com

22 College Approach
Greenwich
London
SE10 9HY

These particulars are for general information only and do not constitute any part of an offer or contract. All statements contained therein are made without responsibility on the part of the vendors or lessors and are not to be relied upon as statement or representation of fact. Intending purchasers or lessees must satisfy themselves, by inspection, or otherwise, as to the correctness of each of the statements or dimensions contained in these particulars..