



**WARD ROAD,  
STRATFORD E15**







Two bedroom apartment located in modern development, Velocity Building E15. Velocity Building is ideally located on Stratford High Street offering easy access to the Olympic Park and Westfield Shopping Centre which offers an exceptional choice of retail outlets and dining experiences.

This spacious apartment benefits from two double bedrooms, master with en-suite bathroom, fully fitted kitchen with integrated appliances, modern bathroom, and large modern living/dining area leading onto private balcony.

Stratford is a key London transport hub, with London Underground (6 minutes walk), London Overground, DLR, buses, regional rail services and international travel connection from Stratford International Station.

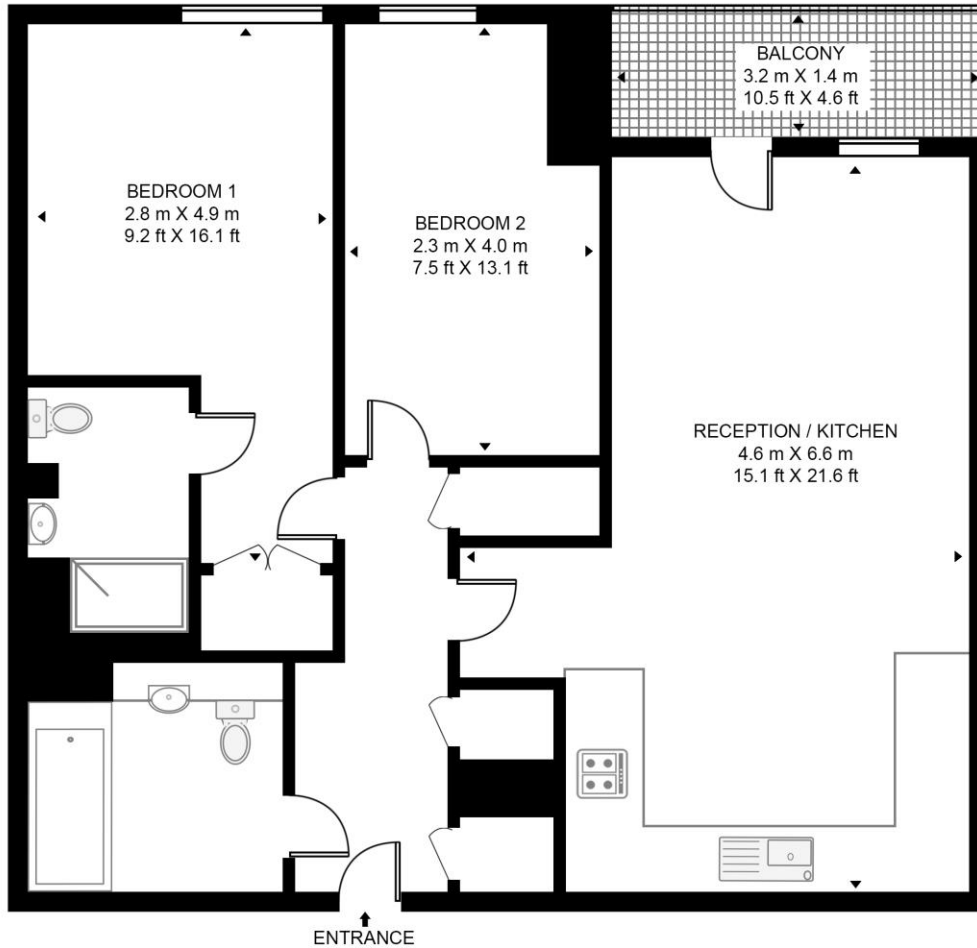
**PRICE**  
OIEO £400,000

**GROSS INTERNAL AREA**  
Approx. 666 sq. ft (61.9 sq. m)

- 2 Bedrooms
- 2 Bathrooms (one en-suite)
- 2nd Floor
- Balcony
- Secure Development
- Leasehold
- Approx. 666 sq. ft (61.9 sq. m)
- 0.3 miles from Stratford station (Jubilee, Central, DLR & Elizabeth Line)

## VELOCITY BUILDING E15

APPROXIMATE GROSS INTERNAL FLOOR AREA 666 SQ.FT (61.9 SQ.M)



### SECOND FLOOR



**HDVA**

This floor plan has been defined by the RICS Code of Measurement. This floor plan and all others are for approximate representative purposes only and upon usage is agreed to as such by the client.

WWW: [hdvirtualart.com](http://hdvirtualart.com) | TEL: 0203.974.1567 | EMAIL: [info@hdvirtualart.com](mailto:info@hdvirtualart.com)

Unex Tower  
5 Station Street  
London  
E15 1DA

These particulars are for general information only and do not constitute any part of an offer or contract. All statements contained therein are made without responsibility on the part of the vendors or lessors and are not to be relied upon as statement or representation of fact. Intending purchasers or lessees must satisfy themselves, by inspection, or otherwise, as to the correctness of each of the statements or dimensions contained in these particulars..