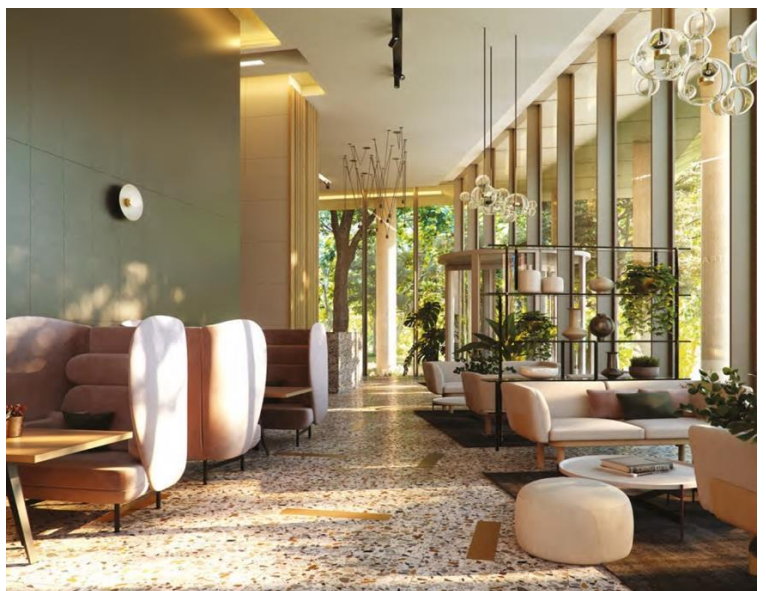


Brill Place, London NW1
Price £1,000 per week - Furnished







Description

Secure your two bedroom apartment within Grand Central now. Brand new two bedroom apartments available to reserve ahead of completion.

Each apartment is finished to the highest standard and comprises an open plan living space, with a stylish and fully integrated kitchen, living area with floor to ceiling windows, two spacious bedrooms with fitted wardrobes, master bedroom with en-suite and a further contemporary bathroom suite with bath and overhead rainfall shower. Each apartment has a private balcony.

Grand Central Apartments, a new residential tower offering 68 one, two and three-bedroom apartments and stunning Penthouses coming soon to London's vibrant King's Cross. Designed by award-winning architects Stiff + Trevillion and inspired by the linear forms and materials of the railway, this is a building that captures the area's forward-looking spirit and iconic industrial past.

Photos are for illustrative purposes only, videos are available upon request. Final move dates are subject to completion of each individual property. As well as paying the rent, you may also be required to make s

- Two bedroom apartments
- Brand New
- Stylish terrazzo kitchens
- Luxury bathroom suites
- Open plan reception room
- Floor to ceiling windows in living room
- Located 0.1 miles from St Pancras and Kings Cross stations
- Day time concierge

Floorplan

sq ft | sq m

Mayfair and Marylebone
13a St George Street,
London W1S 2FQ
+44 207 399 5550
mayfair@jll.com

Urban living, your way.

jll.co.uk/residential

© 2019 Jones Lang LaSalle IP, Inc. All rights reserved. All information contained herein is from sources deemed reliable; however, no representation or warranty is made to the accuracy thereof.

