

## Princes Gate, London SW7

Price £2,800 per week - Unfurnished







## Description

A stunning house arranged over two floors in this ideal location moments from Hyde Park. The property comprises four/five double bedrooms, two bathrooms (one en suite), two shower rooms (en suite), guest cloakroom, an impressive reception room and a modern, open plan kitchen.

Further benefits include wooden flooring in the reception rooms, a study, a superb paved garden and secured parking by separate negotiation. The house is presented to the highest of standards and offers easy access to the open spaces of Hyde Park and Royal Albert Hall.

As well as paying the rent, you may also be required to make some additional permitted payments. Please visit [jll.co.uk/fees](http://jll.co.uk/fees) for details of fees which may be payable when renting a property.

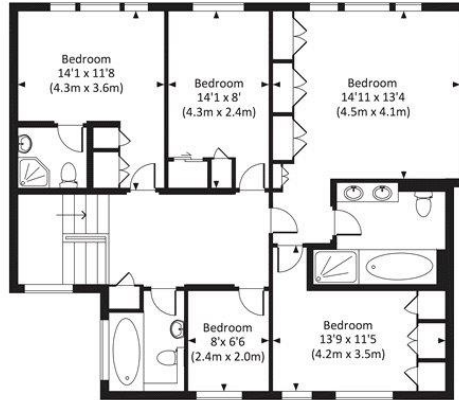
If your tenancy does not qualify as an AST, additional fees may apply.

- 4/5 Double bedrooms
- 4 Bathrooms (3 en suite)
- Guest cloakroom
- Large reception room with doors out to garden
- Open plan kitchen
- Study
- Paved garden
- Secured parking by separate negotiation
- Approx. 2,329 sq ft (216 sq m)
- Unfurnished

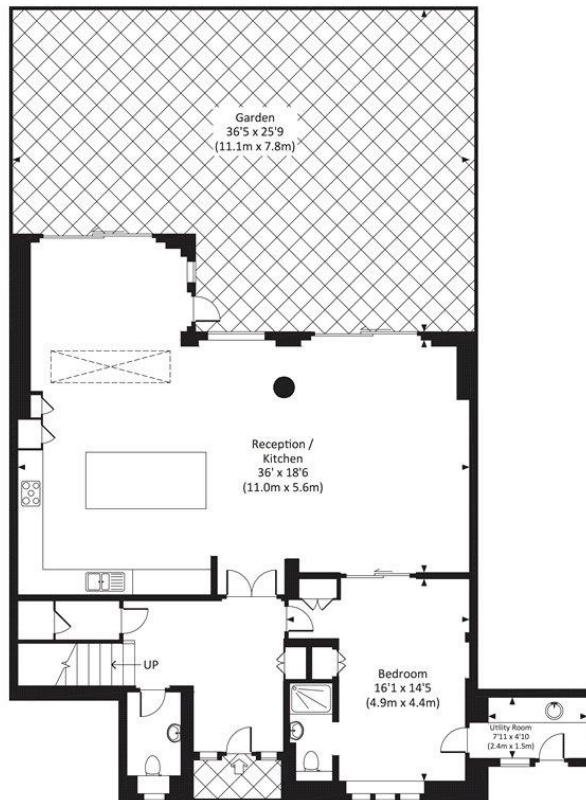
# Floorplan

2,329 sq ft | 216 sq m

Approx. gross internal area  
2329 Sq.Ft. / 216.4 Sq.M.



FIRST FLOOR



GROUND FLOOR



All measurements have been made in accordance with RICS Code of Measuring Practice which are approximate only and only for illustrative purposes. For the avoidance of doubt, Dowling Jones Design shall not be liable for any reliance on these measurements. © 2015 www.dowlingjones.com 020 7610 9933

Knightsbridge  
Wood Wharf,  
London E14 5GX  
+4420 7306 1600  
lettingsknightsbridge@eu.jll.co

*Urban living, your way.*

[jll.co.uk/residential](http://jll.co.uk/residential)

© 2019 Jones Lang LaSalle IP, Inc. All rights reserved. All information contained herein is from sources deemed reliable; however, no representation or warranty is made to the accuracy thereof.

