



## Exhibition Road, London SW7

Price £700 per week - Unfurnished







## Description

A spacious third floor flat (no lift) in this period building in the heart of South Kensington. The property consists of two double bedrooms, one shower room, reception room and a fully fitted kitchen. Exhibition Road is conveniently located for the many shopping and transport amenities of South Kensington and Knightsbridge.

As well as paying the rent, you may also be required to make some additional permitted payments. Please visit [jll.co.uk/fees](http://jll.co.uk/fees) for details of fees which may be payable when renting a property.

If your tenancy does not qualify as an AST, additional fees may apply.

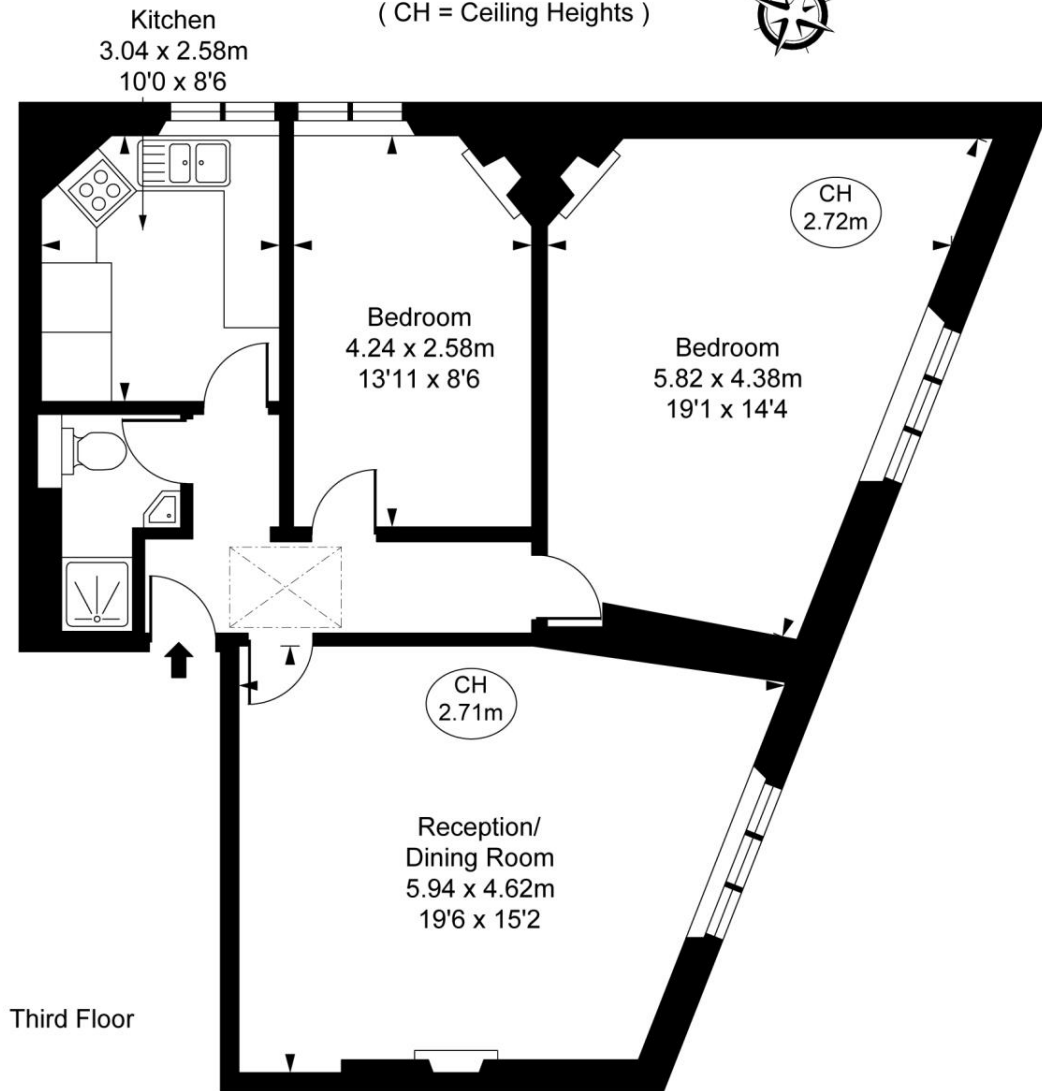
- Two double bedrooms
- Spacious reception room
- Separate kitchen
- Shower room
- Third Floor
- Unfurnished
- Approx: 791 sq ft ( 73 sq m)
- EPC: C

# Floorplan

783 sq ft | 73 sq m

Exhibition Road, SW7  
Approximate Gross Internal Area  
73.46 sq m / 791 sq ft

( CH = Ceiling Heights )



This plan is not to scale. It is for guidance and not for valuation purposes.  
All measurements and areas are approximate only, and have been prepared in accordance with the current edition of the RICS Code of Measuring Practice.  
© Fulham Performance

Knightsbridge  
174 Brompton Road,  
London SW3 1HP  
+4420 7306 1600  
lettingsknightsbridge@eu.jll.co

*Urban living, your way.*

[jll.co.uk/residential](http://jll.co.uk/residential)

© 2019 Jones Lang LaSalle IP, Inc. All rights reserved. All information contained herein is from sources deemed reliable; however, no representation or warranty is made to the accuracy thereof.

