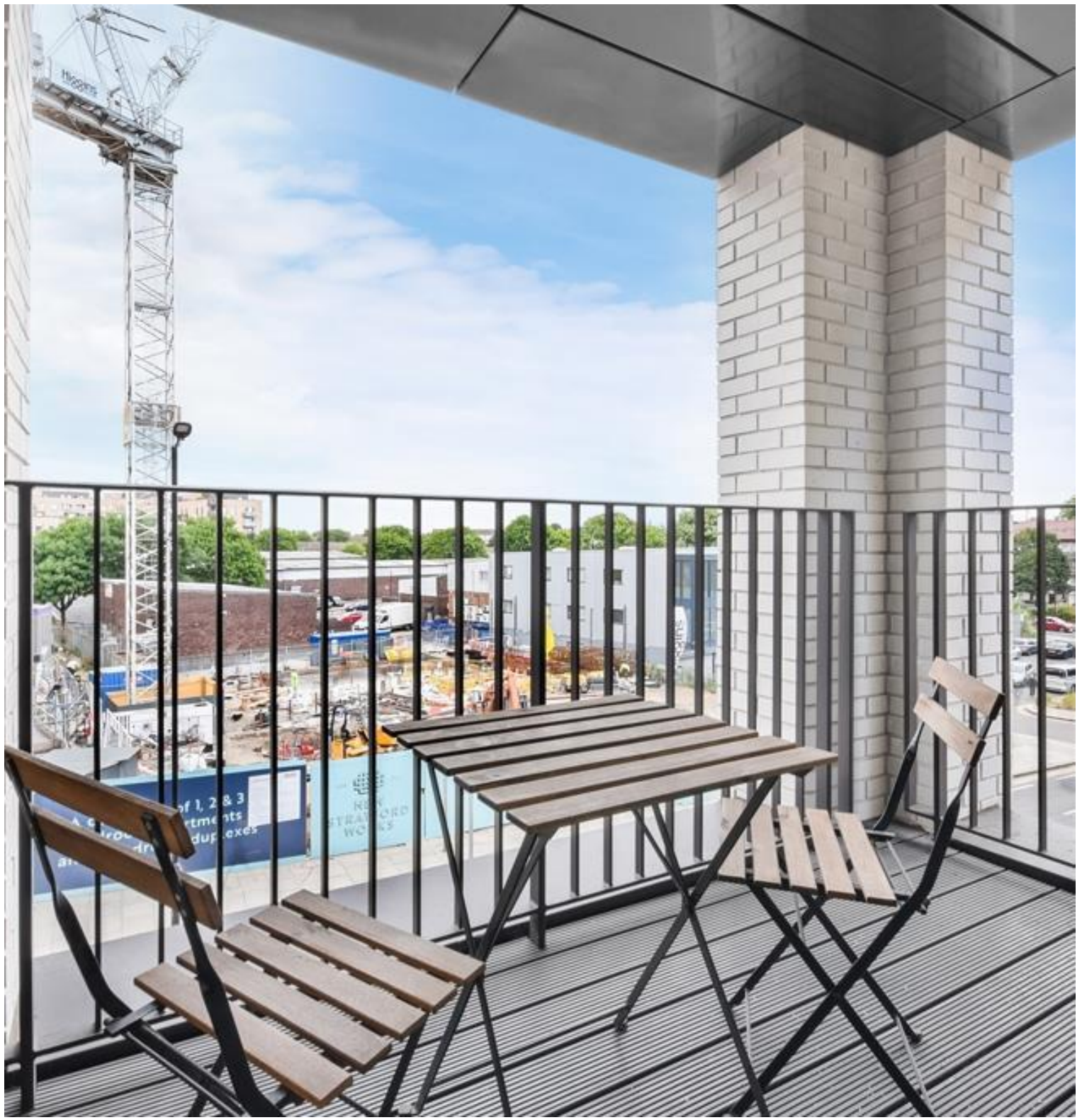




Forrester Way, London E15

Guide price £700,000 Leasehold







Description

Available to the market this spacious apartment 3 bedroom apartment within the New Garden Quarter development, on the edge of the iconic Olympic Park.

Set on the 3rd floor, this property comprising of approximately 1048 sq ft with a private balcony, this apartment offers a high specification open-plan kitchen/living space, underfloor heating throughout, spacious three double bedrooms and two bathrooms (en-suite to master bedroom) with ample storage throughout.

Located next to Queen Elizabeth park boasting a beautifully 2-acre landscaped garden square. The property further benefits from easy access to Westfield Stratford City, short walk to Stratford Underground Station, concierge service, residential gymnasium and secured bike storage.

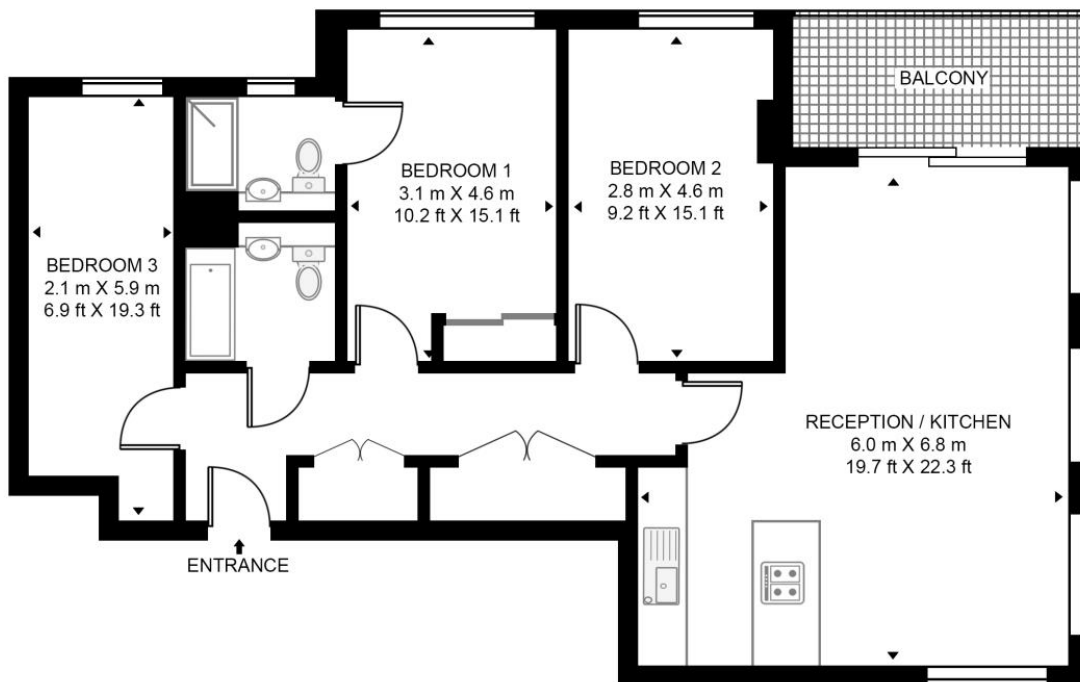
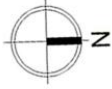
- 3 bedroom
- 2 bathroom
- Ultra modern
- 24hr Concierge
- Residential gym
- Located next to Olympic Park
- Green spaces and 2 acre landscaped garden
- Approx 1042 sq ft (96.8 sq m.)
- 0.4 mile to Stratford underground station
- EPC: B

Floorplan

1,048 sq ft | 97 sq m

MERCHANT HOUSE, NEW GARDEN QUARTER

APPROXIMATE GROSS INTERNAL FLOOR AREA 1048 SQ.FT (97.4 SQ.M)



THIRD FLOOR



This floor plan has been defined by the RICS Code of Measurement. This floor plan and all others are for approximate representative purposes only and upon usage is agreed to as such by the client.

WWW: hdvirtualart.com | TEL: 0203.974.1567 | EMAIL: info@hdvirtualart.com

Stratford
5 Station Street,
London E15 1DA
+4420 3147 1500
Lettingsstratford@eu.jll.com

Urban living, your way.

jll.co.uk/residential

© 2019 Jones Lang LaSalle IP, Inc. All rights reserved. All information contained herein is from sources deemed reliable; however, no representation or warranty is made to the accuracy thereof.

