



Tradewinds, London E16

Guide price £450,000 Leasehold





Description

A two bedroom, two bathroom apartment with allocated parking situated on the 4th floor with a south facing balcony.

Tradewinds is a popular gated riverside development which provides its residents with on site leisure facilities and concierge service. Located approx. 0.2 miles from Pontoon Dock DLR station, 0.6 miles from Royal Albert DLR station and 0.5 miles from London City Airport.

- 2 Bedrooms
- 2 Bathrooms
- South facing balcony
- 4th Floor
- Residents gym
- Allocated parking
- Pontoon Dock DLR - 0.2 mile
- London City Airport - 0.5 mile
- Approx. 658 sq ft (61.1 sq m)
- EPC: B

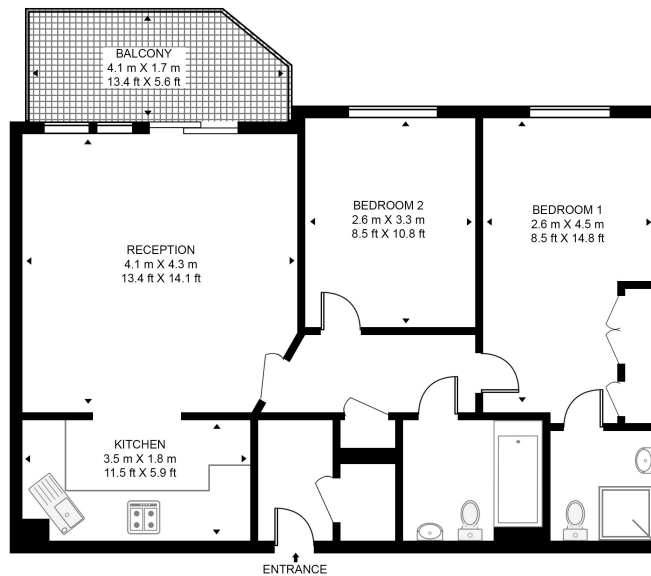


Floorplan

658 sq ft | 61 sq m

TRADEWINDS WARDS

APPROXIMATE GROSS INTERNAL FLOOR AREA 658 SQ.FT (61.1 SQ.M)



FOURTH FLOOR



This floor plan has been defined by the RICS Code of Measurement. This floor plan and all others are for approximate representative purposes only and upon usage is agreed to as such by the client.
WWW: hdvirtualart.com | TEL: 0203.974.1567 | EMAIL: info@hdvirtualart.com

Canary Wharf
11 Westferry Circus,
London E14 4HE
+4420 7715 9700
Lettingscanarywharf@eu.jll.co

Urban living, your way.

jll.co.uk/residential

© 2019 Jones Lang LaSalle IP, Inc. All rights reserved. All information contained herein is from sources deemed reliable; however, no representation or warranty is made to the accuracy thereof.

