

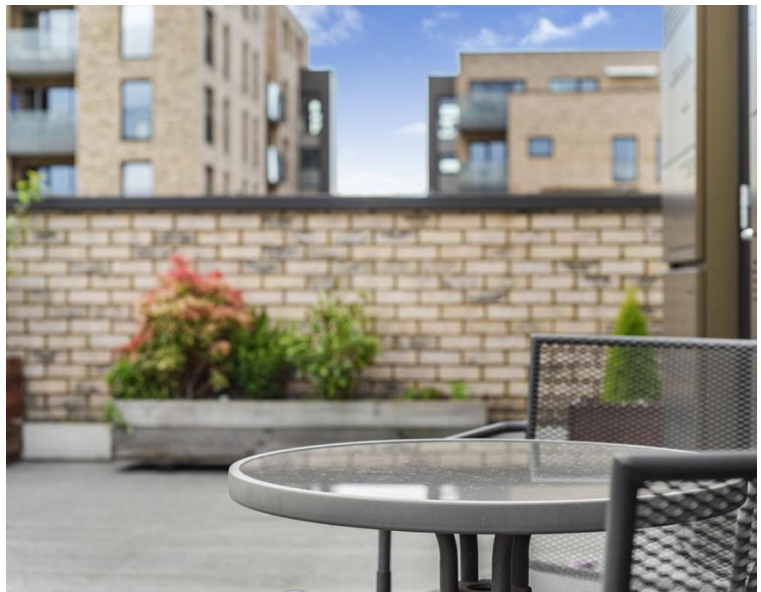


Leyton Road, London E15

Asking price £850,000 Leasehold







Description

Simply stunning one of a kind three bedroom apartment arranged over three floors offering a 520 sq ft private terrace and private underground parking located in the heart of Stratford with Westfields Shopping Centre and Stratford Station which serves the newly opened Elizabeth train line.

This apartment has a separate hall entrance to all residents on the 3rd floor and set on an enormous floorplan of 1438 sq ft. Comprising large entrance hallway with built in storage cupboards, cloakroom/WC, separate modern kitchen/diner with integrated appliances such as fridge/freezer, oven and dishwasher and a good sized reception room with double doors and a Juliette balcony. Being a corner unit you will greatly benefit from both Kitchen/diner and Living room being dual aspect and being South/west facing, you will have fabulous natural light throughout the day.

On the lower floor, the property has three good sized bedrooms, master with a built in wardrobe and an en-suite shower room. Plenty of storage cupboards from the hallway and a modern family bathroom.

The top floor offers a beautiful 37 ft long 520 sq ft private roof terrace with far reaching panoramic views of the area.

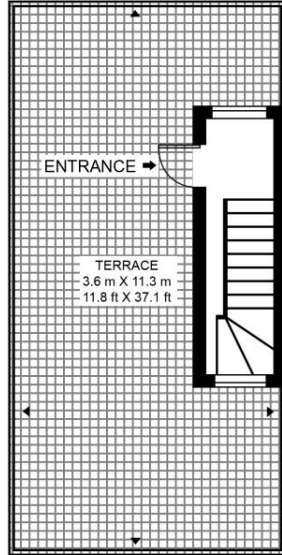
- 3 Double bedrooms
- 2 Bathrooms + WC
- 520 sq ft private roof terrace
- Underfloor heating throughout
- Separate hall entrance to other residents
- Arranged over three floors
- Beautifully presented throughout
- Private underground car park space
- Approx. 1,438 sq ft (133.6 sq m)
- Lots of storage

Floorplan

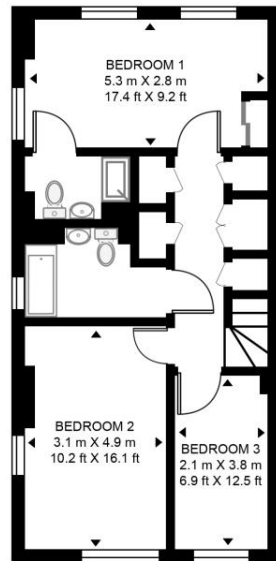
1,438 sq ft | 134 sq m

ATLANTIC BUILDING

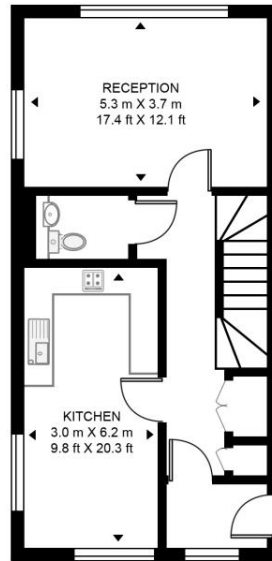
APPROXIMATE GROSS INTERNAL FLOOR AREA 1438 SQ.FT (133.6 SQ.M)



FOURTH FLOOR



SECOND FLOOR



THIRD FLOOR



This floor plan has been defined by the RICS Code of Measurement. This floor plan and all others are for approximate representative purposes only and upon usage is agreed to as such by the client.

WWW: hdvirtualart.com | TEL: 0203.974.1567 | EMAIL: info@hdvirtualart.com

Stratford
5 Station Street,
London E15 1DA
+4420 3147 1500
Lettingsstratford@eu.jll.com

Urban living, your way.

jll.co.uk/residential

© 2019 Jones Lang LaSalle IP, Inc. All rights reserved. All information contained herein is from sources deemed reliable; however, no representation or warranty is made to the accuracy thereof.

