



## Queenstown Road, London SW11

Guide price £850,000 Leasehold





# Description

Finished to an extremely high standard this beautifully furnished apartment comprises of open plan kitchen reception room with floor to ceiling windows looking towards the park, one bedroom, luxury shower room and terrace.

Located in the eye-catching Berkeley Homes development called Vista, Chelsea Bridge Wharf. Located adjacent to the stunning Battersea Park and the exciting redevelopment of Battersea Power Station, you are also within easy reach of Sloane Square. You are well connected with bus links, national rail services and underground services all in close proximity.

The building design is complemented by the lovely views and immaculate interior finishes. Residents benefit from a 24 hour concierge service, on site gym, pool and sauna.



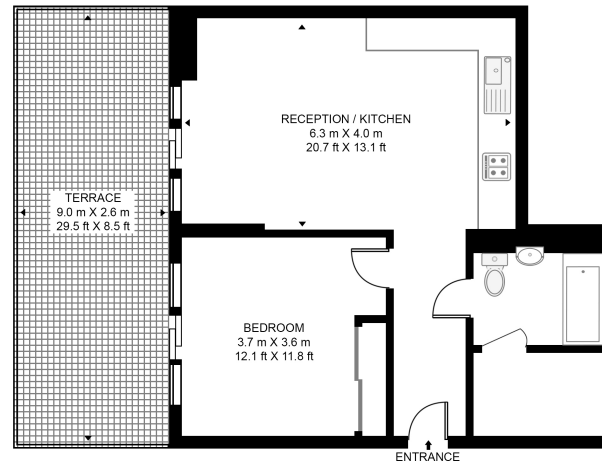
- 1 Bedroom
- 1 Bathroom
- Terrace
- Gym, pool & spa
- 24 hr. concierge
- Opposite Battersea Park
- Less than 1 mile to Sloane Square
- 610 sqft.
- EPC:B

# Floorplan

610 sq ft | 57 sq m

## ALTISSIMA HOUSE, VISTA

APPROXIMATE GROSS INTERNAL FLOOR AREA 610 SQ.FT (56.7 SQ.M)



GROUND FLOOR



This floor plan has been defined by the RICS Code of Measurement. This floor plan and all others are for approximate representative purposes only and upon usage is agreed to as such by the client.  
WWW: [hdvirtualart.com](http://hdvirtualart.com) | TEL: 0203.974.1567 | EMAIL: [info@hdvirtualart.com](mailto:info@hdvirtualart.com)

City  
25 Walbrook The Walbrook  
Building,  
London EC4N 8AF  
+4420 7337 4000

*Urban living, your way.*

[jll.co.uk/residential](http://jll.co.uk/residential)

© 2019 Jones Lang LaSalle IP, Inc. All rights reserved. All information contained herein is from sources deemed reliable; however, no representation or warranty is made to the accuracy thereof.

