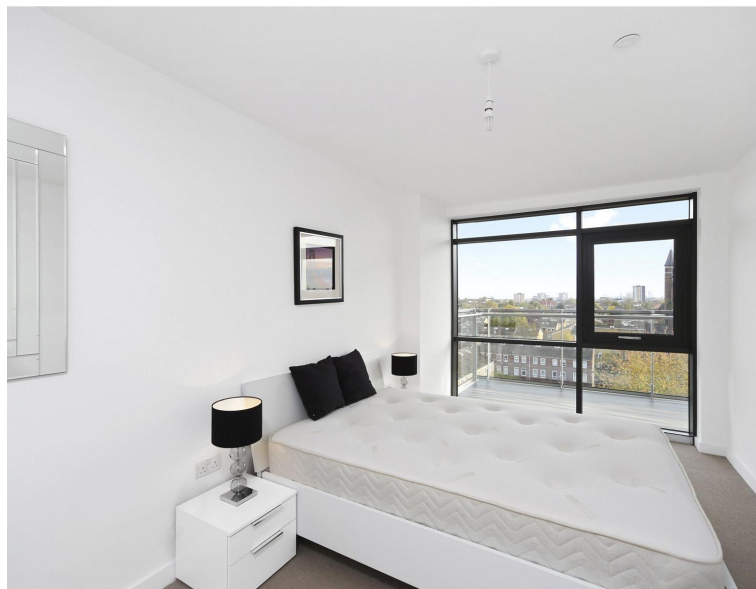




Vibe, London E8

Guide price £650,000 Leasehold







Description

A stunning 2 bedroom apartment in the popular Fuse Building, Vibe, Dalston.

Situated on the 5th floor and offered fully furnished, this spacious 2 bedroom apartment offers approximately 858 sq ft of living space and comprises 2 double bedrooms with large fitted wardrobes and en-suite shower room to master, spacious reception area, large balcony with stunning views towards Canary Wharf, fully fitted kitchen with Smeg appliances, wood flooring and excellent storage space.

Vibe is well situated to commute to the City of London, and is close to Shoreditch and London Fields. The development is 0.1 mile from Dalston Junction and 0.4 miles from Dalston Kingsland, in zone 2. Other benefits include 24 hour concierge, on-site gym and communal roof garden.

This property is offered to the market with no onward chain, early viewings are highly recommended

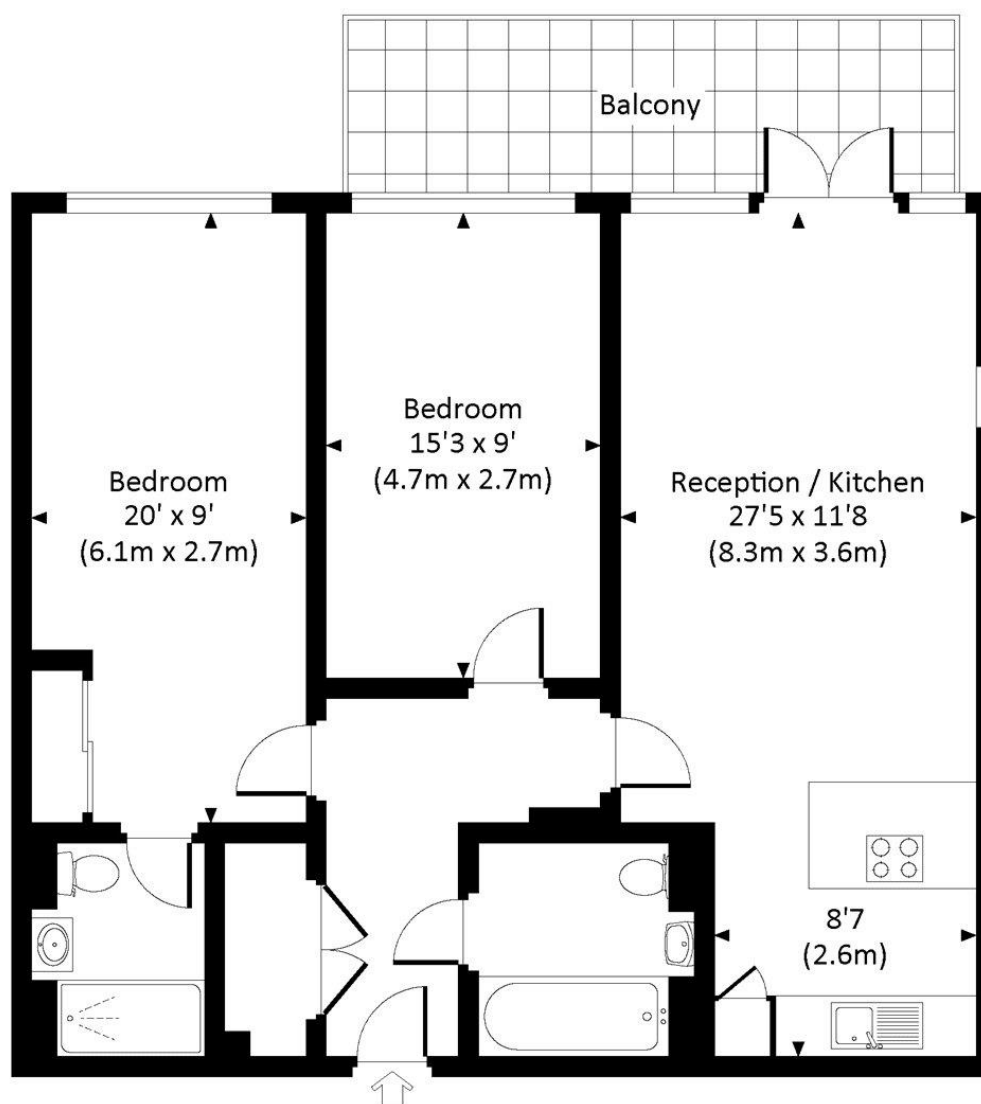
- 2 Bedrooms
- 2 Bathrooms
- 5th Floor
- Large balcony with views to Canary Wharf
- Fully fitted kitchen
- 24 Hour concierge
- 0.1 miles to Dalston Junction Overground
- Approx. 858 sq ft (79.7 sq m)
- Furnished
- EPC: B

Floorplan

858 sq ft | 80 sq m

FUSE BUILDING, BEECHWOOD ROAD, E8

Approx. gross internal area
858 Sq Ft. / 79.7 Sq M.



All measurements have been made in accordance with RICS Code of Measuring Practice which are approximate only and only for illustrative purposes. For the avoidance of doubt, Dowling Jones Design shall not be liable for any reliance on these measurements. © 2016 www.dowlingjones.com 020 7610 9933

City
25 Walbrook The Walbrook
Building,
London EC4N 8AF
+4420 7337 4000

Urban living, your way.

jll.co.uk/residential

© 2019 Jones Lang LaSalle IP, Inc. All rights reserved. All information contained herein is from sources deemed reliable; however, no representation or warranty is made to the accuracy thereof.

