



Strand, London WC2R

Price £1,695 per week - Furnished







Description

A luxurious 2 bedroom apartment in the sought after 190 Strand, Westminster, WC2.

Situated on the 5th floor, this stunning 2 bedroom apartment offers an abundance of space, approximately 1092.9 sq ft. The property comprises of a spacious reception and fitted kitchen with marble work surfaces, master bedroom with built in wardrobes and en suite, further double bedroom, luxury bathroom with marble finish, excellent storage space.

The development offers on site leisure facilities including gymnasium, swimming pool, private cinema, business / conference facilities and 24 hour concierge. The development is situated on the world famous Strand, Westminster WC2, (approx) 0.2 miles from Temple station and (approx) 0.5 miles from Covent Garden.

This property is offered with no onward chain, early viewings are highly recommended.

As well as paying the rent, you may also be required to make the following permitted payments. If your tenancy does not qualify as an AST, additional fees may apply. Please visit jll.co.uk/fees for details of fees which may be payable when ren

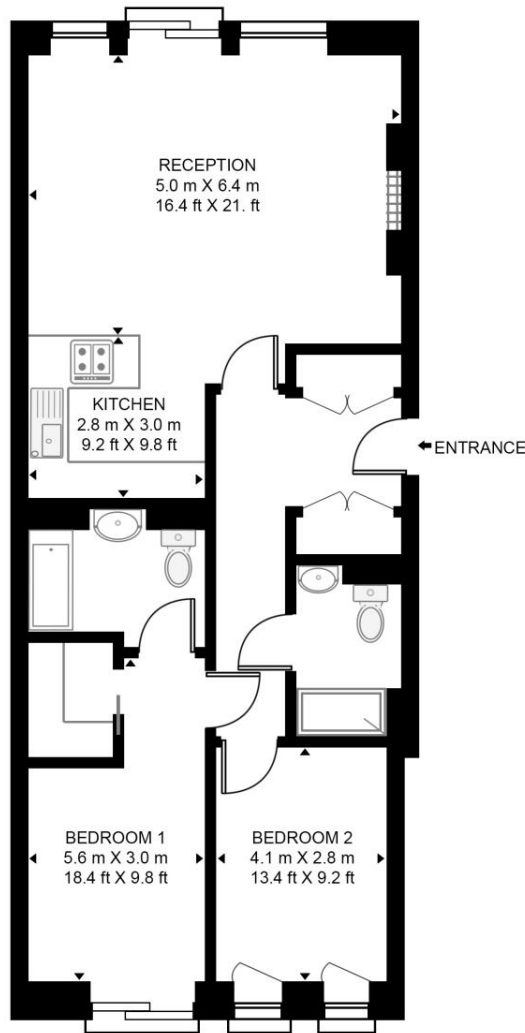
- 2 Bedrooms
- 2 Bathrooms
- 5th floor
- High specification
- On site leisure facilities
- 0.2 miles from Temple station
- Approx. 1,092.9 sq ft (101.5 sq m)
- Furnished
- EPC: B

Floorplan

1,092 sq ft | 102 sq m

GLADSTONE HOUSE, 190 STRAND

APPROXIMATE GROSS INTERNAL FLOOR AREA 1090 SQ.FT (101.3 SQ.M)



FIFTH FLOOR



This floor plan has been defined by the RICS Code of Measurement. This floor plan and all others are for approximate representative purposes only and upon usage is agreed to as such by the client.
WWW: hdvirtualart.com | TEL: 0203.974.1567 | EMAIL: info@hdvirtualart.com

City
25 Walbrook The Walbrook
Building,
London EC4N 8AF
+4420 7337 4000

Urban living, your way.

jll.co.uk/residential

© 2019 Jones Lang LaSalle IP, Inc. All rights reserved. All information contained herein is from sources deemed reliable; however, no representation or warranty is made to the accuracy thereof.

