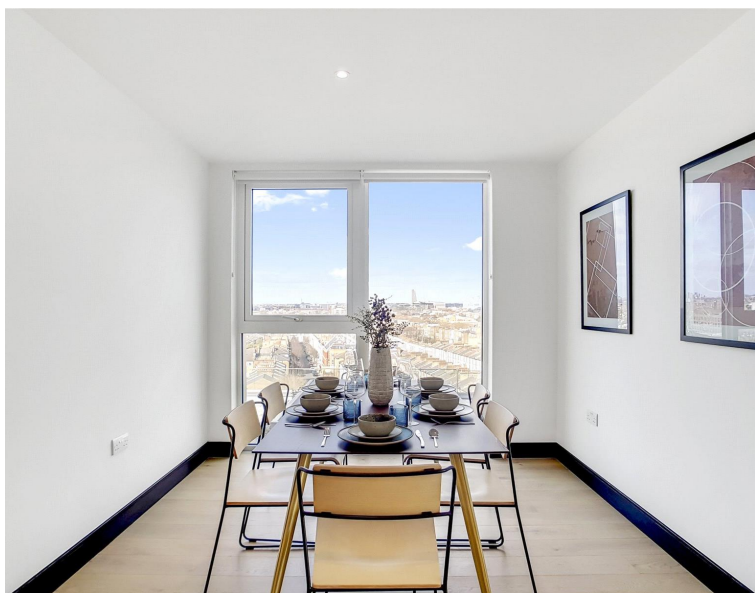


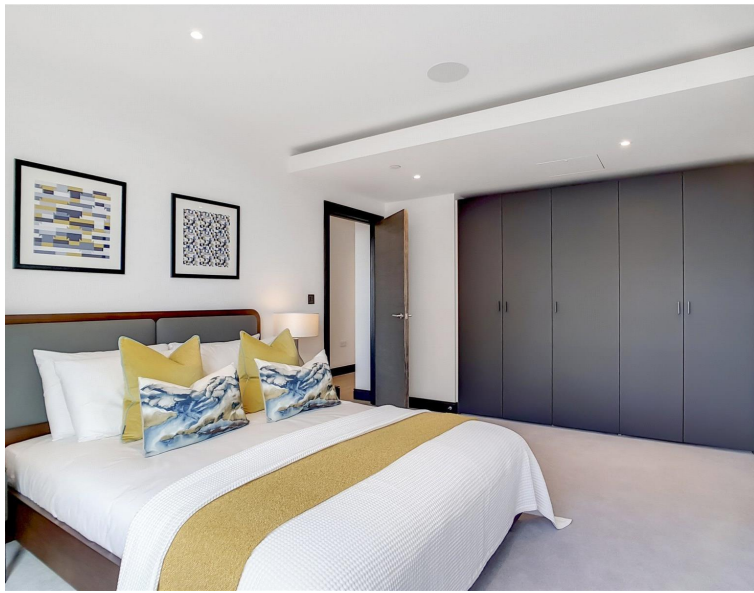


# Glenthorne Road, London W6

Asking price £1,800,000 Leasehold







## Description

A spacious 3 bedroom apartment is set within this luxurious, centrally located development in Hammersmith, and comes with a private parking space.

Arranged over the eighth floor of Montpellier House with excellent skyline views, the apartment benefits from wood floors, state-of-the-art appliances, use of the onsite gym, 24-hour concierge and communal gardens. The apartment also benefits from an underground parking space.

The apartment comprises of 3 bedrooms, 2 bathrooms, and a large open plan reception/kitchen area. Furthermore the apartment also consist of wooden floors, state of the art appliances and 2 separate balconies with excellent London skyline views.

Residents benefit from beautifully landscaped gardens, a 24-hour concierge, interior designed entrance foyer, and a private resident's gym.

Sovereign Court is perfectly located for access to Hammersmith Broadway servicing Piccadilly, District, Hammersmith and City and Circle lines.

- 3 Bedrooms
- 2 Bathrooms
- 2 Private balconies
- Underground parking space
- 24 Hour concierge
- Resident facilities
- Approx 1410.4 sq ft (131 sq m)
- EPC: B

# Floorplan

1,410 sq ft | 131 sq m

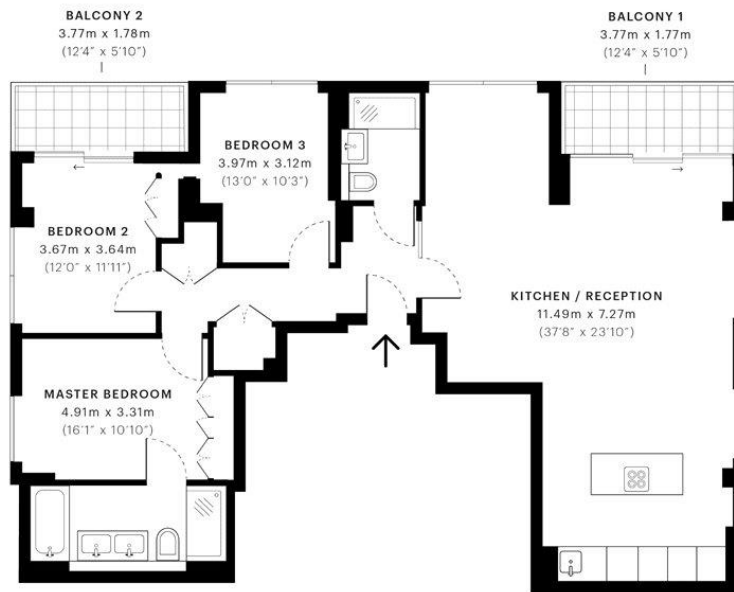


## Montpellier House , 17 Glenthorne

CAPTURE DATE  
11/03/2019

LASER SCAN POINTS  
35,049,602

GROSS INTERNAL AREA  
131.0 Sqm / 1410.4 Sqft



— Eighth Floor

GROSS INTERNAL AREA  
The footprint of the property  
131.0 Sqm / 1410.4 Sqft

NET AREA (INTERNAL)  
Excludes walls and external features  
125.4 Sqm / 1349.9 Sqft

EXTERNAL STRUCTURAL FEATURES  
Balconies, terraces, verandas etc.  
13.5 Sqm / 145.3 Sqft

RESTRICTED HEAD HEIGHT  
Limited use area under 1.5m  
0.0 Sqm / 0.0 Sqft



Spec floor plans are produced in accordance with Royal Institution of Chartered Surveyors Property Measurement Standards. If you intend to rely on any measurement in a transaction you should perform your own checks. Plot/Gardens illustrative only and excluded from all area calculations.

IPMS 3B RESIDENTIAL  
146.4 Sqm / 1575.9 Sqft

IPMS 3C RESIDENTIAL  
140.8 Sqm / 1515.4 Sqft

SPEC ID  
5c6d42df3ec1fd0a07761933

Kensington  
387 Kensington High Street,  
London W14 8QA  
+4420 7087 5696  
lettingskensington@eu.jll.com

*Urban living, your way.*

[jll.co.uk/residential](http://jll.co.uk/residential)

© 2019 Jones Lang LaSalle IP, Inc. All rights reserved. All information contained herein is from sources deemed reliable; however, no representation or warranty is made to the accuracy thereof.

