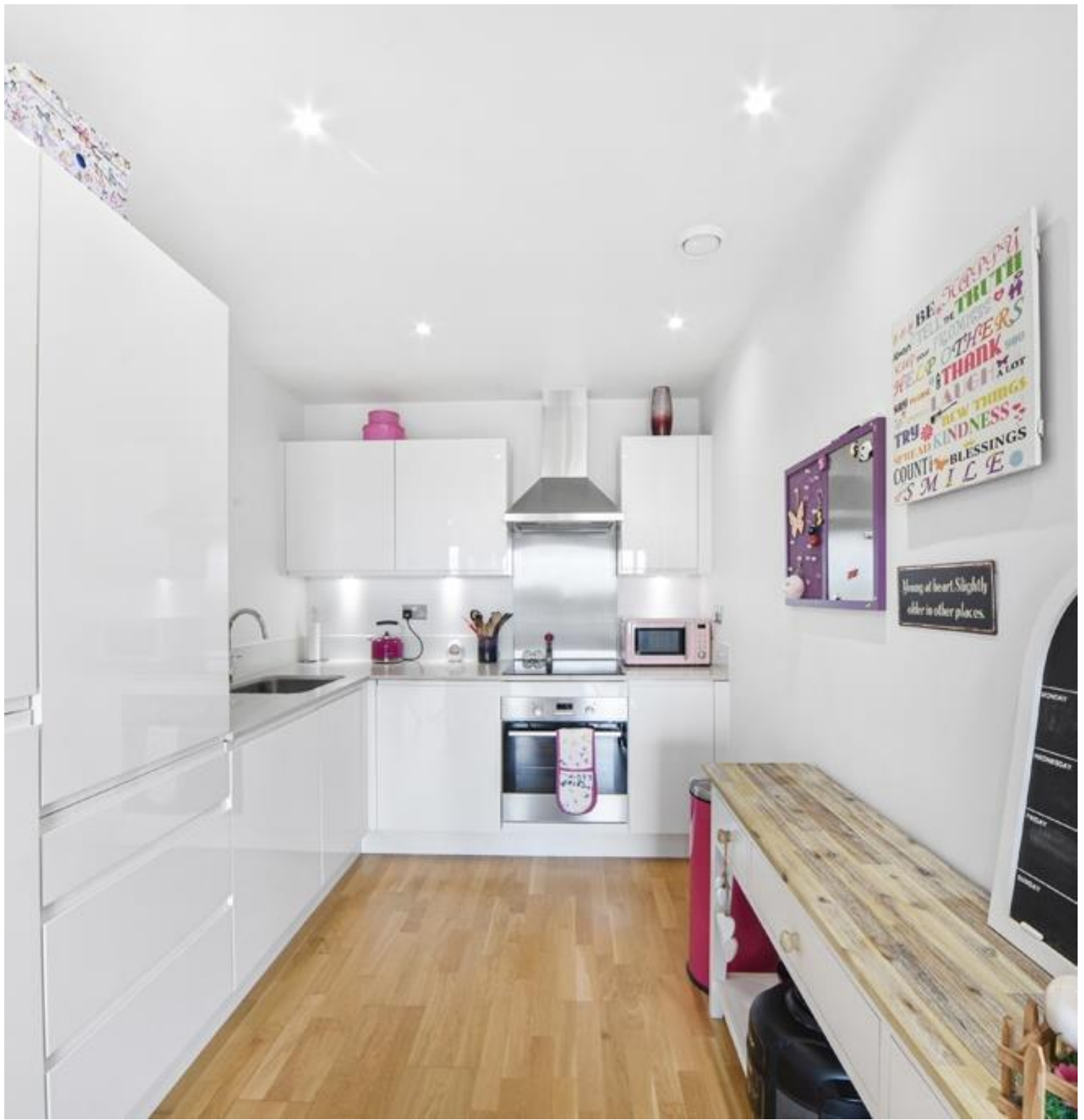


Great Eastern Road, London E15

Asking price £450,000 Leasehold







Description

Introducing this impressive 5th-floor modern (approx. 576 sq. ft) one-bedroom apartment situated in the renowned Azure Building, a prominent part of the esteemed Stratosphere development. Bathed in natural light, this residence offers a spacious and inviting living environment.

The property consists of one double bedroom with built-in wardrobes, a contemporary open-plan kitchen with integrated appliances, living-room area with room-to-dine, private balcony with urban views, modern bathroom and double door storage.

As a resident, you will have the privilege of enjoying a range of exceptional amenities, including a 24-hour concierge service, an exclusive residents-only gym, and a Wi-Fi lounge. Furthermore, secure cycle storage and two beautifully landscaped roof terraces are available for your leisure.

Situated in the vibrant Stratford area, this apartment boasts excellent transportation links, allowing easy access to The City, Canary Wharf, and the West End. Stratford underground station, one of London's busiest and most connected stations, ensures convenient and swift connections to various destinations.

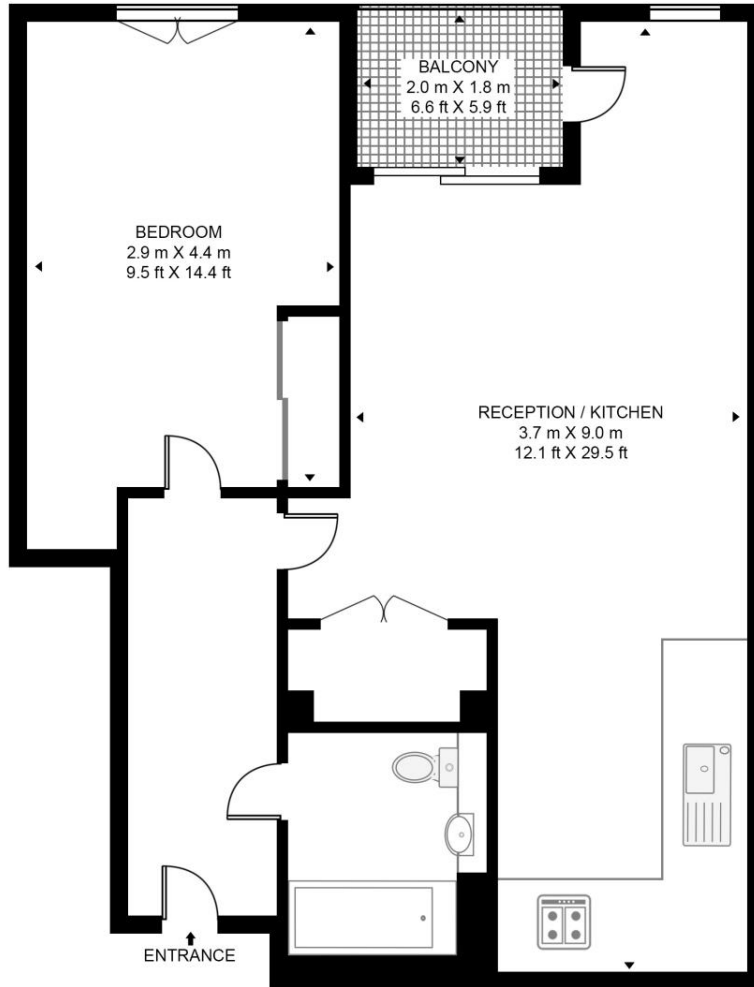
- 1 Bedroom apartment
- Modern bathroom
- 5th Floor with lift access
- Balcony (South aspect)
- 2 Roof terraces
- Residents-only gym
- 24-hour concierge service
- Approx. 576 sq. ft (53.5 sq. m)
- 0.2 miles from Stratford Underground
- EPC B Rating

Floorplan

sq ft | sq m

AZURE BUILDING

APPROXIMATE GROSS INTERNAL FLOOR AREA 576 SQ.FT (53.5 SQ.M)



FIFTH FLOOR



This floor plan has been defined by the RICS Code of Measurement. This floor plan and all others are for approximate representative purposes only and upon usage is agreed to as such by the client.
WWW: hdvirtualart.com | TEL: 0203.974.1567 | EMAIL: info@hdvirtualart.com

Stratford
5 Station Street,
London E15 1DA
+4420 3147 1500
Lettingsstratford@eu.jll.com

Urban living, your way.

jll.co.uk/residential

© 2019 Jones Lang LaSalle IP, Inc. All rights reserved. All information contained herein is from sources deemed reliable; however, no representation or warranty is made to the accuracy thereof.

