



Hammersmith Grove, London W6

Guide price £600,000 Leasehold





Description

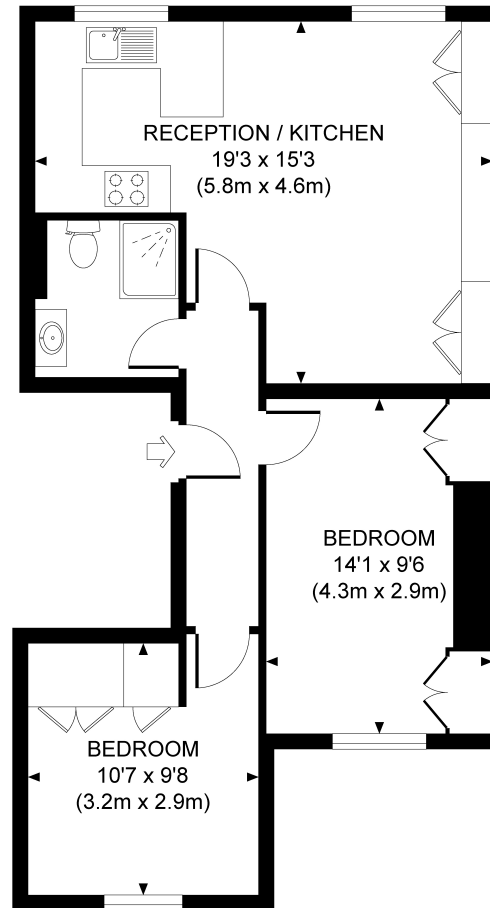
A beautiful two bedroom apartment in Brackenbury Village, a quiet location within Hammersmith. The property is arranged over the first floor of a Victorian Conversion and comprises two double bedrooms, one stylish bathroom, and a bright and comfortable open plan kitchen and reception room with high ceilings and large windows. The property is very well located on a nice tree lined street just minutes walk from the transport links and shopping that Hammersmith has to offer. Approximately 67 years left on lease, expires in 2088 and the current rental income is £31,500 per annum.

- 2 Double bedrooms with storage
- 1 Tastefully designed bathroom
- Open plan living room and kitchen
- Lots of natural light
- High ceilings
- Current rental income £31,500 pa
- Approx 567 sq ft / 52.7 sq m
- EPC: D
- Approx 67 years left on lease, expires 2088.



HAMMERSMITH GROVE, W6

Approx. gross internal area
567 Sq Ft. / 52.7 Sq M.



FIRST FLOOR

All measurements are approximate and for guidance and illustrative purposes only.
Photography and Floor Plans by www.thedowlingco.com - +44 7793 974 209

Kensington
387 Kensington High Street,
London W14 8QA
+4420 7087 5696
lettingskensington@eu.jll.com

Urban living, your way.

jll.co.uk/residential

© 2019 Jones Lang LaSalle IP, Inc. All rights reserved. All information contained herein is from sources deemed reliable; however, no representation or warranty is made to the accuracy thereof.

