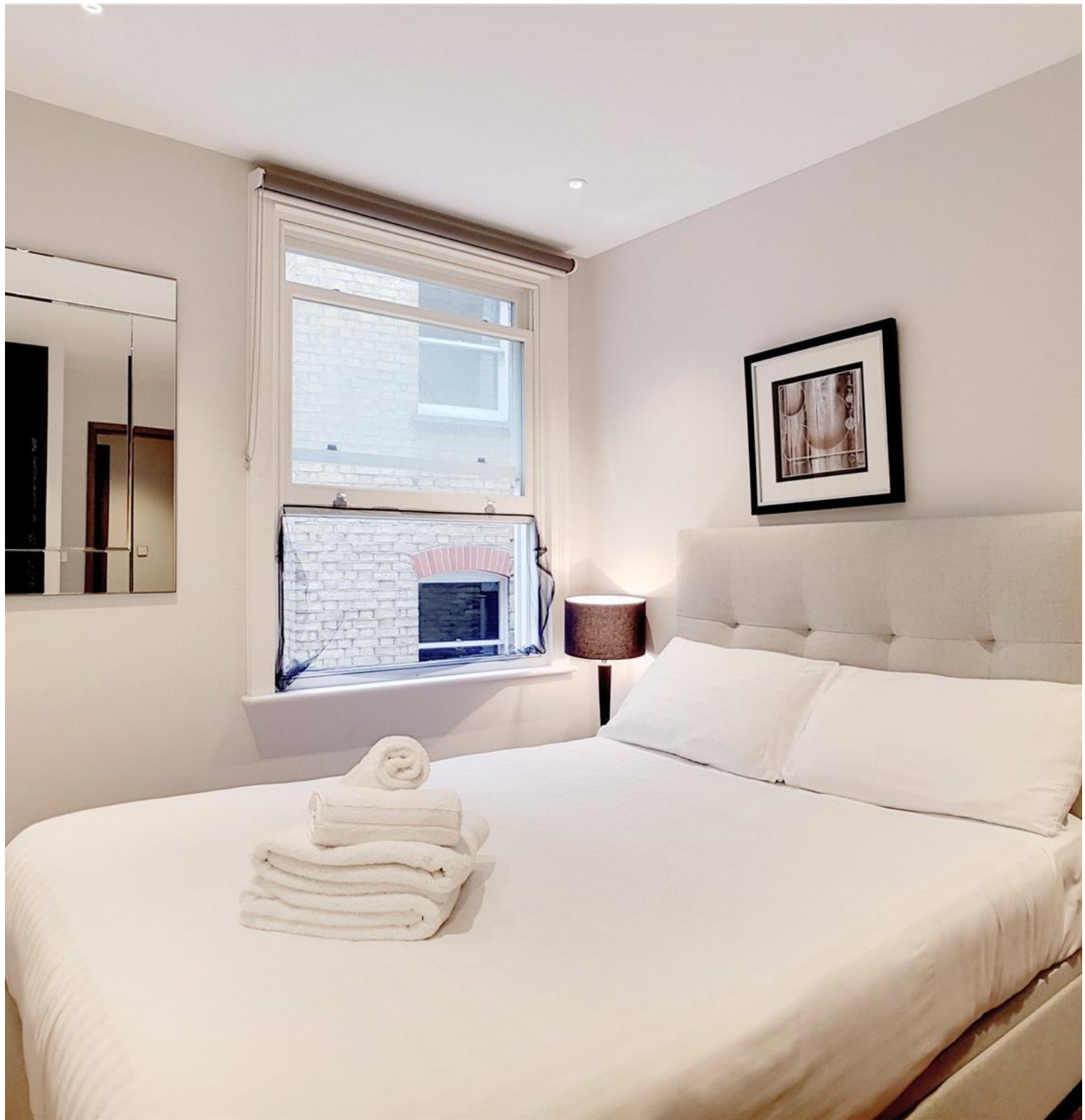


**Lovat Lane, London EC3R**

Price £465 per week - Furnished









## Description

A luxury 1 bedroom apartment situated in the historical Monument area of the City of London, along the characteristically cobbled Lovat Lane.

Offered with no onward chain, this contemporary 1 bedroom apartment is situated on the second floor and comprises double bedroom with fitted wardrobes, reception area, open plan fitted kitchen with Siemens appliances, modern bathroom and wood flooring.

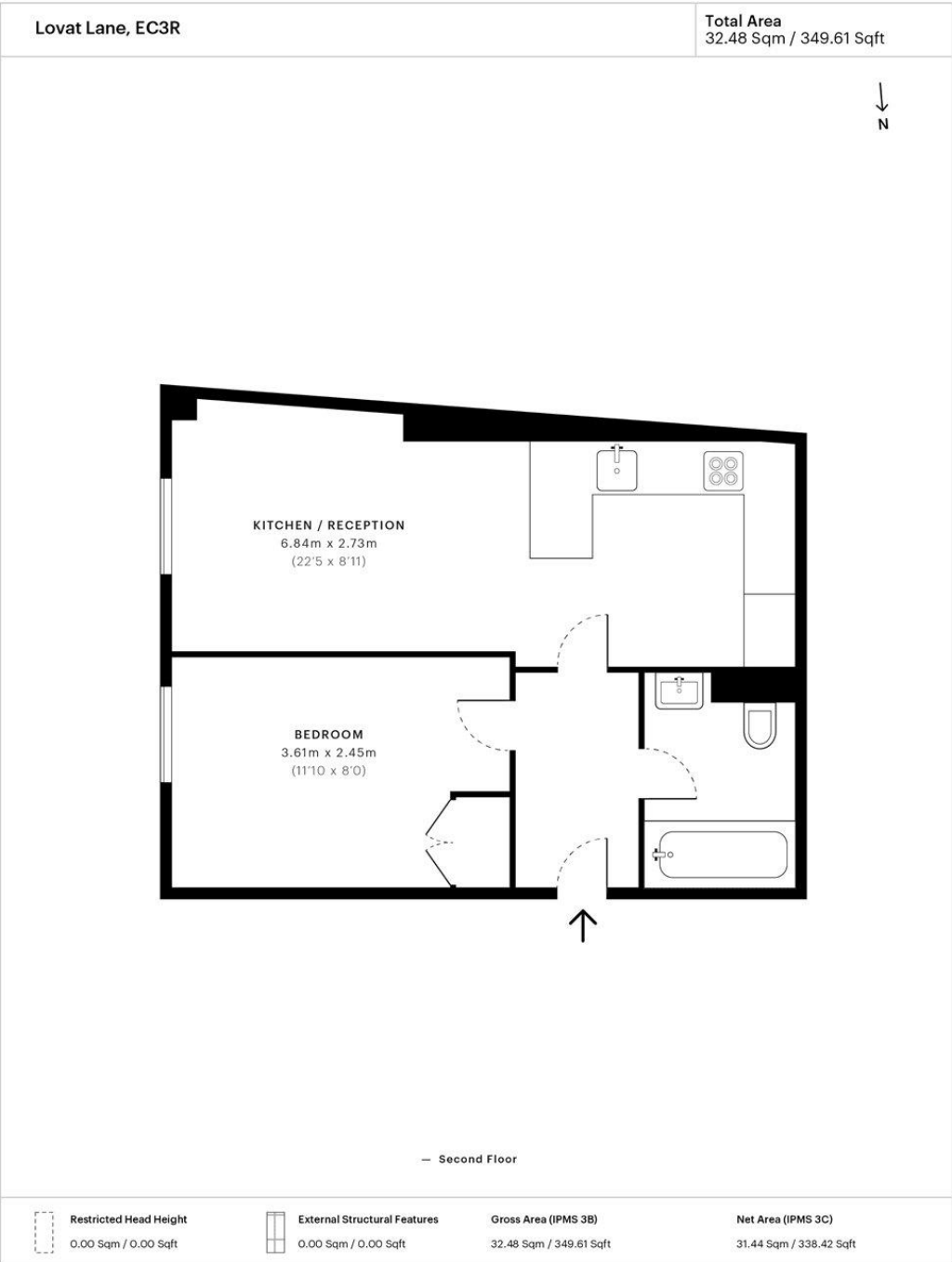
The development boasts a fantastic location, the heart of the financial district of the City. Stations close by include Monument (0.1 mile), Cannon Street (0.3 miles), Fenchurch Street (0.4 miles), Tower Hill (0.4 miles) and Bank (0.4 miles). The iconic Tower of London is also a short walk away (0.5 miles).

As well as paying the rent, you may also be required to make some additional permitted payments. If your tenancy does not qualify as an AST, additional fees may apply. Please visit [jll.co.uk/fees](http://jll.co.uk/fees) for details of fees which may be payable when renting a property.

- 1 Bedroom
- 1 Bathroom
- 2nd floor
- Open-plan kitchen
- Siemens appliances
- 0.1 miles from Monument Station
- Approx. 349.61 sq ft (32.48 sq m)
- Furnished
- EPC : B

# Floorplan

350 sq ft | 33 sq m



Spec floor plan captured for JLL, City Office on 04/09/2018 using 18,475,408 laser scan points, accurate to +/- 3cm. Produced in accordance with Royal Institution of Chartered Surveyors Property Measurement Standards, incorporating International Property Measurement Standard (IPMS). If you intend to rely on any measurement in a transaction you should perform your own checks. Plot/Gardens illustrative only and excluded from all area calculations. SpecID: 5b87da25a70fb50c45c80262

**Restricted Head Height** = Limited use area under 1.5m. **External Structural Features** = Balconies, terraces or verandas or similar. **IPMS 3B** = gross internal area measured from the internal faces of external walls, including walls/obstructions and External Structural Features, excluding stairwell area above/below the ground floor. **IPMS 3C** = net area of IPMS 3B excluding internal walls/obstructions and stairwell area above/below the ground floor. **Total Area** = IPMS 3B gross area + stairwell area above/below ground floor of 0.00 Sqm / 0.00 Sqft.



City  
25 Walbrook The Walbrook  
Building,  
London EC4N 8AF  
+4420 7337 4000

Urban living, your way.

[jll.co.uk/residential](http://jll.co.uk/residential)

© 2019 Jones Lang LaSalle IP, Inc. All rights reserved. All information contained herein is from sources deemed reliable; however, no representation or warranty is made to the accuracy thereof.

