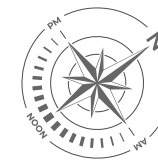
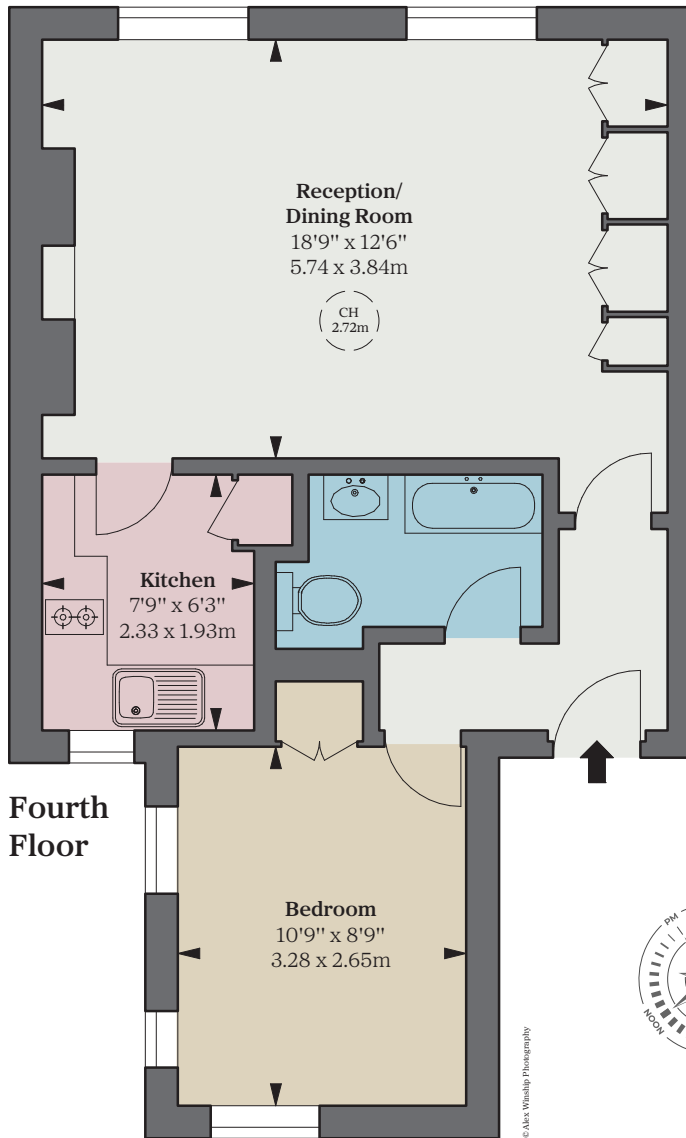




ARUNDEL COURT

JUBILEE PLACE SW3 3TJ



A comfortable "pied-à-terre" situated on the fourth floor of a well-known small modern block of flats. It is situated at the northern end of Jubilee Place on the corner of Chelsea Green which has recently been re-landscaped to include new planting and a fountain.

Accommodation

- Bedroom
- Bathroom
- Kitchen
- Reception room
- Lift
- Caretaker
- Communal central heating and hot water

Guide Price £650,000

Tenure Leasehold

121 years (exp. 20/12/2147)

Service Charge 4.5% of outgoings,

£7,396 for the year ending 24/3/2026 inc. reserve fund

Ground Rent Peppercorn

Local Authority The Royal Borough

of Kensington & Chelsea

EPC Rating D

Approximate Gross Internal Area

492 sq ft / 45.75 sq m

Floorplan for guidance only, not to scale or valuations purposes. It must not be relied upon as a statement of fact. All measurements and areas are approximate and have been prepared in accordance with the current edition of the RICS Code of Measuring Practice.

THE BROCHURE ALEX WINSHIP

These particulars are for general information only and do not constitute any part of an offer or contract. All statements contained therein are made without responsibility on the part of the vendors or lessors and are not to be relied upon as statement or representation of fact. Intending purchasers or lessees must satisfy themselves, by inspection, or otherwise, as to the correctness of each of the statements or dimensions contained in these particulars. This floorplan is for guidance only and not for valuation purposes. 01/05/24 JLL-230609C-04GG

Savills Knightsbridge
knightsbridge_sales@savills.com

020 7581 5234

Savills Sloane Street
sloanestreet@savills.com

020 7730 0822

savills.co.uk



JLL Knightsbridge

knightsbridge@eu.jll.com | 020 7306 1600

JLL Chelsea

chelsea@eu.jll.com | 020 7399 5010

jll.co.uk/residential