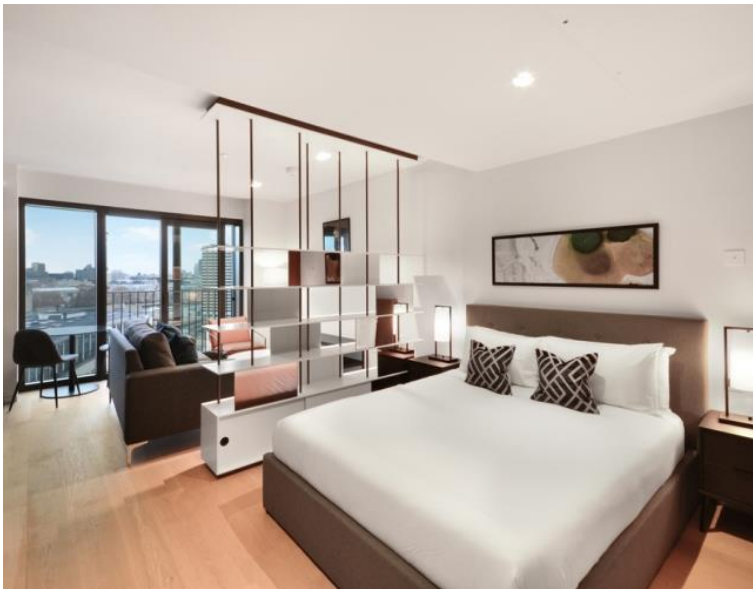
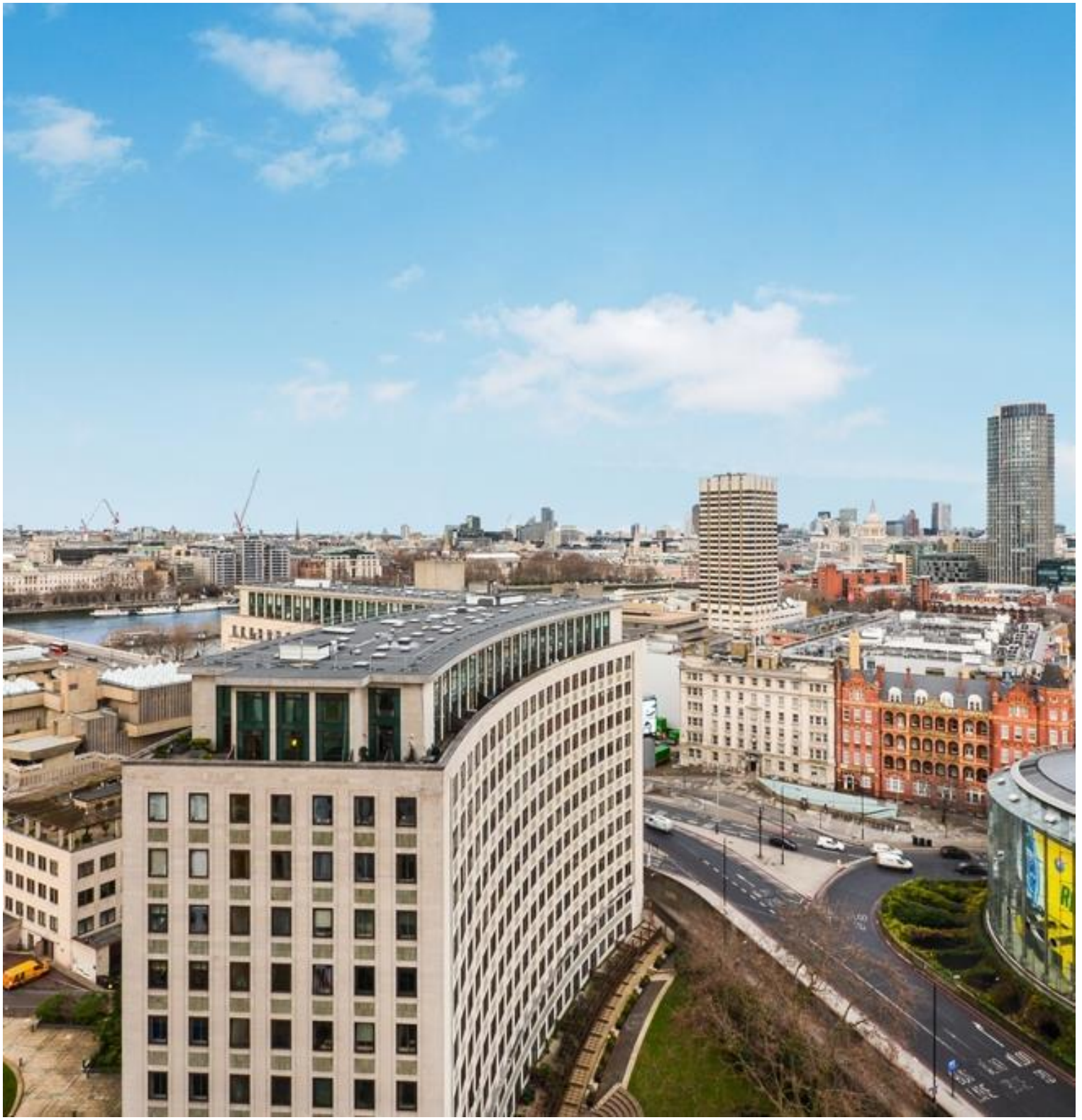




Casson Square, London SE1

Price £780 per week - Furnished







Description

JLL are delighted to present a furnished 16th floor studio suite in 1 Casson Square, a sought-after development moments from Waterloo Station, SE1. Casson Square boasts luxury facilities including, swimming pool, gym, residents lounge and 24-hour concierge.

Situated on the 16th floor with stunning view towards The Shard, the Thames and the City skyline, this spacious studio apartment comprises a well sized living room with a fully fitted kitchen to include Miele appliances, partitioned sleeping area with large fitted wardrobes, contemporary shower room, wood flooring and excellent storage space. The property has a high specification throughout featuring comfort cooling, underfloor heating and smart home technology.

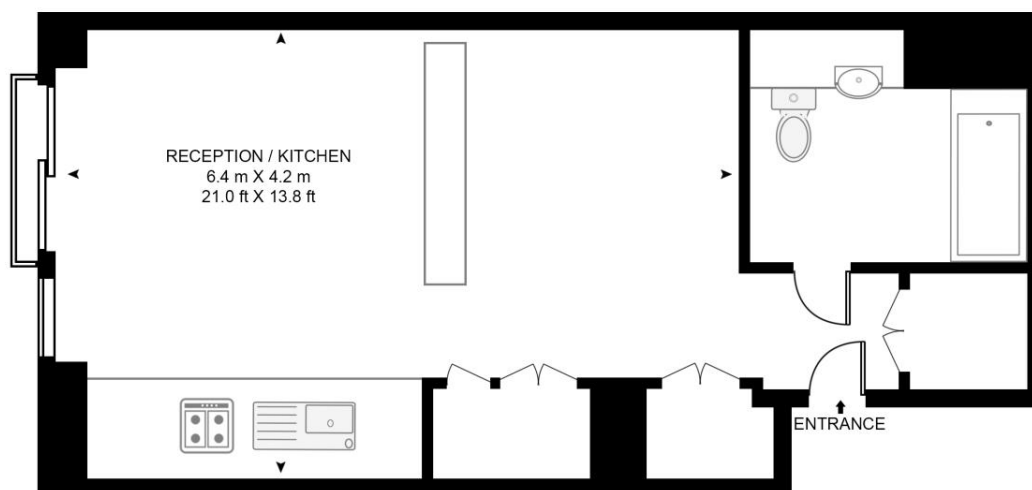
The development benefits from top of the range amenities which include an on-site gym, swimming pool with spa, exclusive resident's lounge and 24-hour concierge. 8 Casson Square is in the heart of Southbank and on the doorstep of Waterloo Station (0.2 miles) and moments from the iconic London Eye. The City of London is within easy reach as is London's famous West End.

- Studio
- 1 Bathroom
- 16th Floor
- Easterly views towards The Shard
- Luxury fitted kitchen with Miele appliances
- 24 hour concierge
- Luxury residents facilities
- Approx. 375 sq ft (34.9 sq m)
- 0.2 mile from Waterloo Station
- Furnished

Floorplan

375 sq ft | 35 sq m

CASSON SQUARE, SOUTHBANK PLACE, LONDON, SE1 7GU
APPROXIMATE GROSS INTERNAL FLOOR AREA 375 SQ.FT (34.9 SQ.M)



SIXTEENTH FLOOR

HDVA

This floor plan has been defined by the RICS Code of Measurement. This floor plan and all others are for approximate representative purposes only and upon usage is agreed to as such by the client.

WWW: hdvirtualart.com | TEL: 0203.974.1567 | EMAIL: info@hdvirtualart.com

City
25 Walbrook The Walbrook
Building,
London EC4N 8AF
+4420 7337 4000

Urban living, your way.

jll.co.uk/residential

© 2019 Jones Lang LaSalle IP, Inc. All rights reserved. All information contained herein is from sources deemed reliable; however, no representation or warranty is made to the accuracy thereof.

