



## Station Street, London E15

Asking price £475,000 Leasehold







## Description

Opportunity to purchase this 7th floor modern apartment within the Stratford Plaza development also known as Unex Tower, one of Stratford's most sought after developments.

Situated on the seventh floor comprising approximately 636 square feet and ultra modern throughout, the property boasts an open-plan kitchen/living area with integrated appliances, large winter garden, floor-to-ceiling-windows allowing plenty of light, double bedroom with a separate bathroom.

Located directly opposite Stratford Station, residents benefit being less than a minute walk to one of London's most well connected and busiest stations. You are also just a couple of minutes walk to Stratford Westfield shopping Centre to indulge in retail therapy and a selection of some of London's most well known restaurants.

Unex Tower features a private residents roof terrace with spectacular 360° vistas of London, 24 hour concierge and security service and secured bicycle storage.

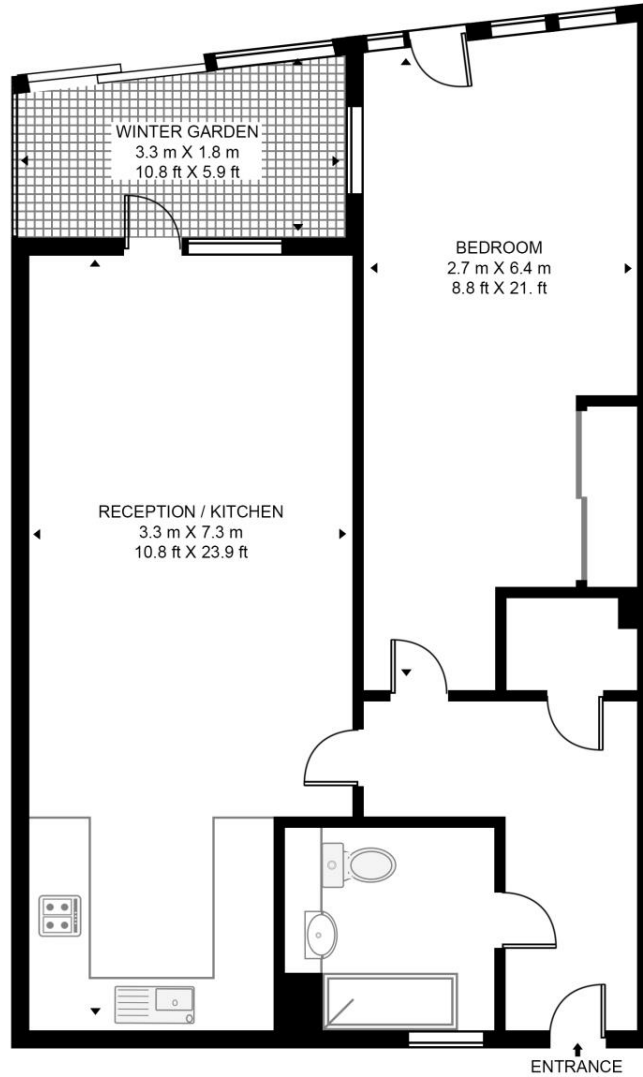
- Spacious one bedroom apartment
- Modern and secure development
- 7th floor
- Great views
- Leasehold
- Winter garden
- 24hr Concierge
- Approx. 638 sq. ft (59.3 sq. m)
- Approx. 1 minute away from Stratford Station and Westfield Shopping Centre
- Queen Elizabeth Olympic Park on your doorstep

# Floorplan

638 sq ft | 59 sq m

## UNEX TOWER

APPROXIMATE GROSS INTERNAL FLOOR AREA 638 SQ.FT (59.3 SQ.M)



## SEVENTH FLOOR



This floor plan has been defined by the RICS Code of Measurement. This floor plan and all others are for approximate representative purposes only and upon usage is agreed to as such by the client.  
WWW: [hdvirtualart.com](http://hdvirtualart.com) | TEL: 0203.974.1567 | EMAIL: [info@hdvirtualart.com](mailto:info@hdvirtualart.com)

Stratford  
5 Station Street,  
London E15 1DA  
+4420 3147 1500  
[Lettingsstratford@eu.jll.com](mailto:Lettingsstratford@eu.jll.com)

*Urban living, your way.*

[jll.co.uk/residential](http://jll.co.uk/residential)

© 2019 Jones Lang LaSalle IP, Inc. All rights reserved. All information contained herein is from sources deemed reliable; however, no representation or warranty is made to the accuracy thereof.

