



**GREAT EASTERN ROAD,  
STRATFORD E15**







**A fantastic two bedroom, two bathroom apartment on the second floor of one of Stratford's most sought after locations which is a stone's throw from Stratford Underground station with direct transport links to The City, Canary Wharf and the West End.**

Completely modern and immaculate throughout, property comprises large entrance hallway with great size storage cupboard, family bathroom, 2 double bedrooms with en-suite to master, fully fitted and modern kitchen and large living area leading to 80 sq ft private balcony area.

Legacy Tower is a striking 31-storey tower which will offers dual aspect views of both the Queen Elizabeth Olympic Park and Westfield's Stratford City.

Residents benefit from access to a 24 hour concierge service and a private residents' gymnasium.

Direct transport links servicing The City, Canary Wharf and the West End are readily accessible.

**PRICE**  
OIEO £590,000

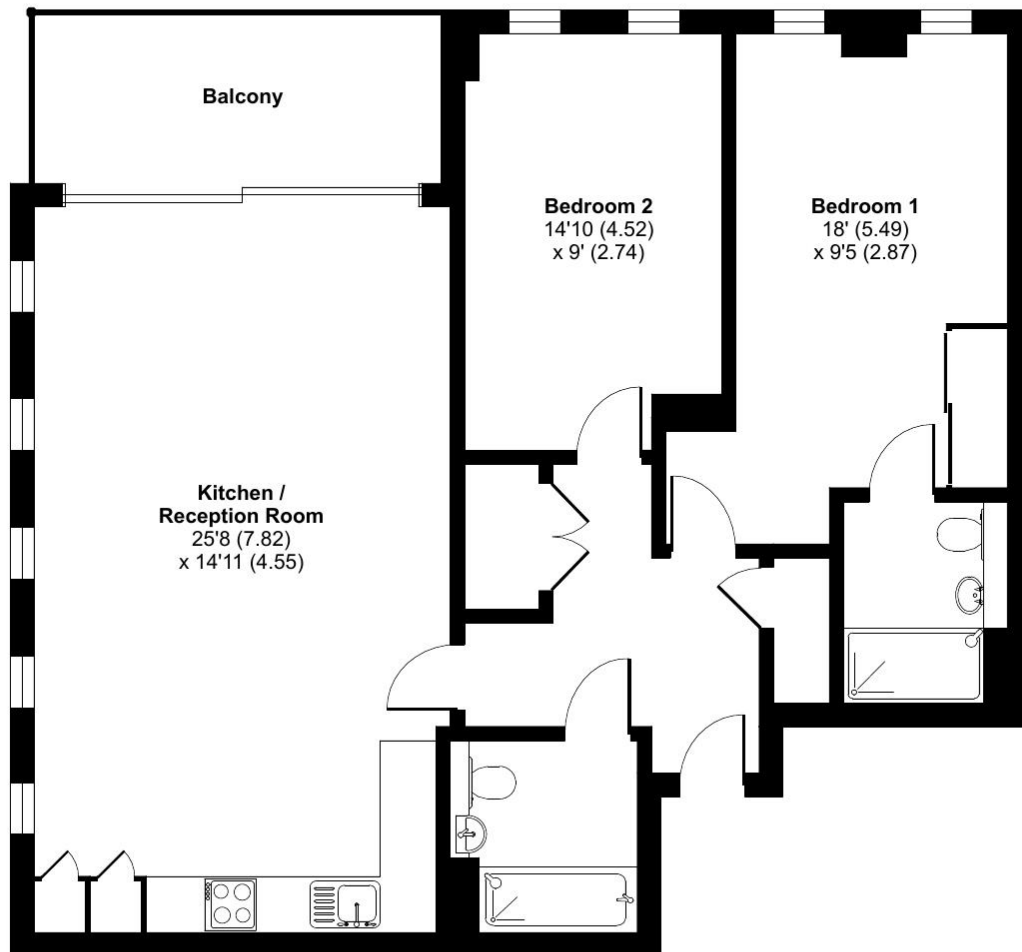
**GROSS INTERNAL AREA**  
Approx. 918 sq. ft (85.3 sq. m)

- 2 Bedroom apartment (918 sq. ft)
- 2 Bathrooms (one en-suite)
- 2nd Floor with lift access
- 24 Hour Concierge Service
- Private Residents' gym
- 0.1 Mile from Stratford Station (Jubilee, Central, DLR, Overground and Elizabeth Line)
- Easily Accessible to Westfield Shopping Centre

# Great Eastern Road, London, E15

Approximate Area = 918 sq ft / 85.3 sq m

For identification only - Not to scale



**SECOND FLOOR**



Floor plan produced in accordance with RICS Property Measurement Standards incorporating International Property Measurement Standards (IPMS2 Residential). © nchecon 2023. Produced for L&Q Group. REF: 980200

Unex Tower  
5 Station Street  
London  
E15 1DA

These particulars are for general information only and do not constitute any part of an offer or contract. All statements contained therein are made without responsibility on the part of the vendors or lessors and are not to be relied upon as statement or representation of fact. Intending purchasers or lessees must satisfy themselves, by inspection, or otherwise, as to the correctness of each of the statements or dimensions contained in these particulars..