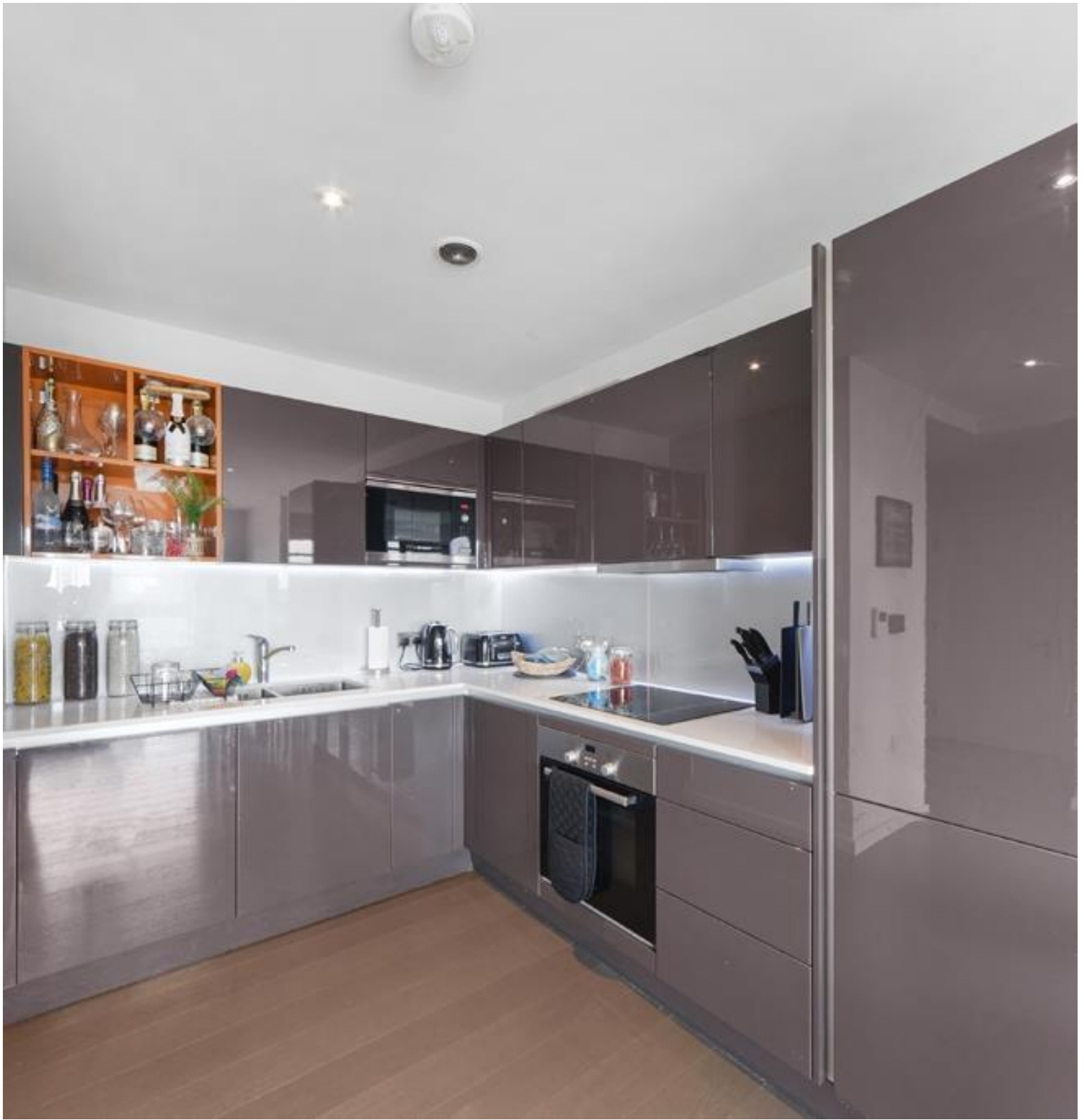


Glasshouse Gardens, London E20

Asking price £495,000 Leasehold







Description

This high specification one bedroom apartment has fantastic views across the Olympic Park. Located in the desirable Glasshouse Gardens development, Cassia Point offers a concierge and gym as well as being just a short distance from Stratford Underground station for a quick commute to Liverpool Street and Canary Wharf.

Comprising of a living room, open plan grey high gloss kitchen with integrated appliances. Superb views of the iconic stadium and aquatics centre. Spacious bedroom with built in wardrobes. Family bathroom with mirrored cabinets and a luxurious finish.

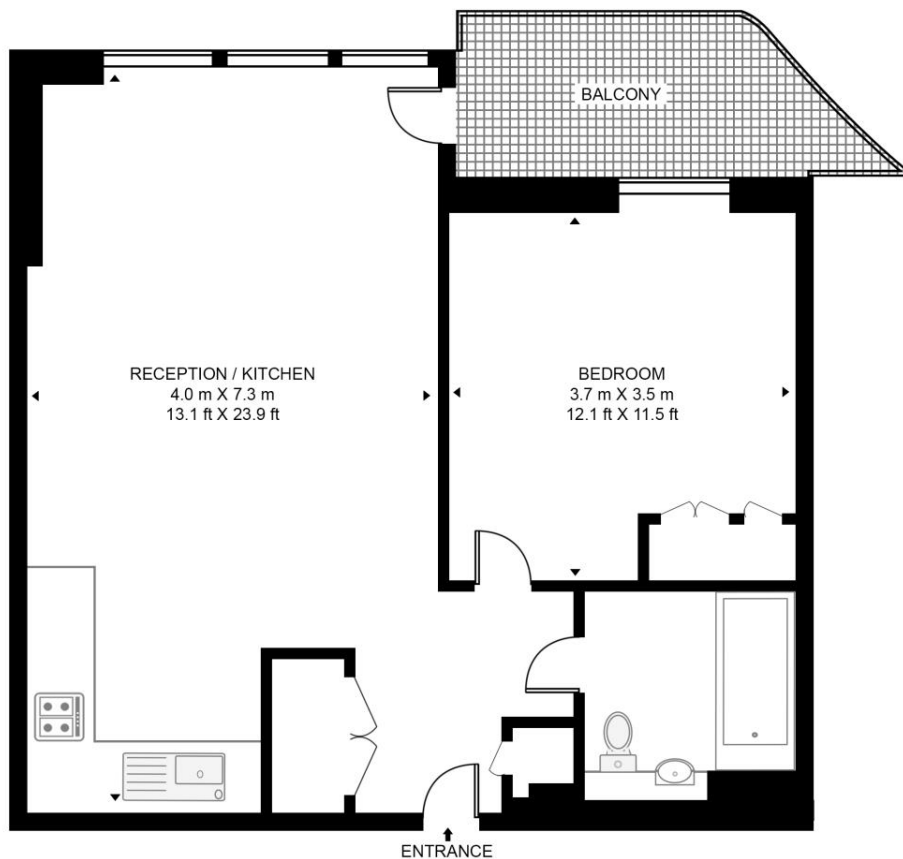
- One bedroom apartment (approximately 562sq. ft)
- 6th Floor with lift access
- Balcony (South aspect)
- 24-hour Concierge Service
- Residents-only Gym
- Residents landscaped Garden
- Moments to Stratford Westfield
- 5 min walk to Stratford Station
- EPC rating B

Floorplan

562 sq ft | 52 sq m

LANTANA HEIGHTS

APPROXIMATE GROSS INTERNAL FLOOR AREA 562 SQ.FT (52.2 SQ.M)



SIXTH FLOOR



This floor plan has been defined by the RICS Code of Measurement. This floor plan and all others are for approximate representative purposes only and upon usage is agreed to as such by the client.
WWW: hdvirtualart.com | TEL: 0203.974.1567 | EMAIL: info@hdvirtualart.com

Stratford
5 Station Street,
London E15 1DA
+4420 3147 1500
Lettingsstratford@eu.jll.com

Urban living, your way.

jll.co.uk/residential

© 2019 Jones Lang LaSalle IP, Inc. All rights reserved. All information contained herein is from sources deemed reliable; however, no representation or warranty is made to the accuracy thereof.

