

Buckingham Gate, London SW1E

Price £6,350 per week - Furnished







Description

A beautifully presented fifteenth floor penthouse apartment which has been interior designed by TH2 Designs and offers spectacular views to the north, east and south of the City. Accommodation comprises master bedroom with dressing area and en suite bathroom, two further double bedroom suites, fourth double bedroom, a further bathroom, guest cloakroom, a stylishly decorated reception room with dining area, a fully fitted kitchen with seating area and a media room. Further benefits include wooden flooring and marble back drops with floor to ceiling glass windows providing natural light and city views, underground parking and 24 hour concierge service.

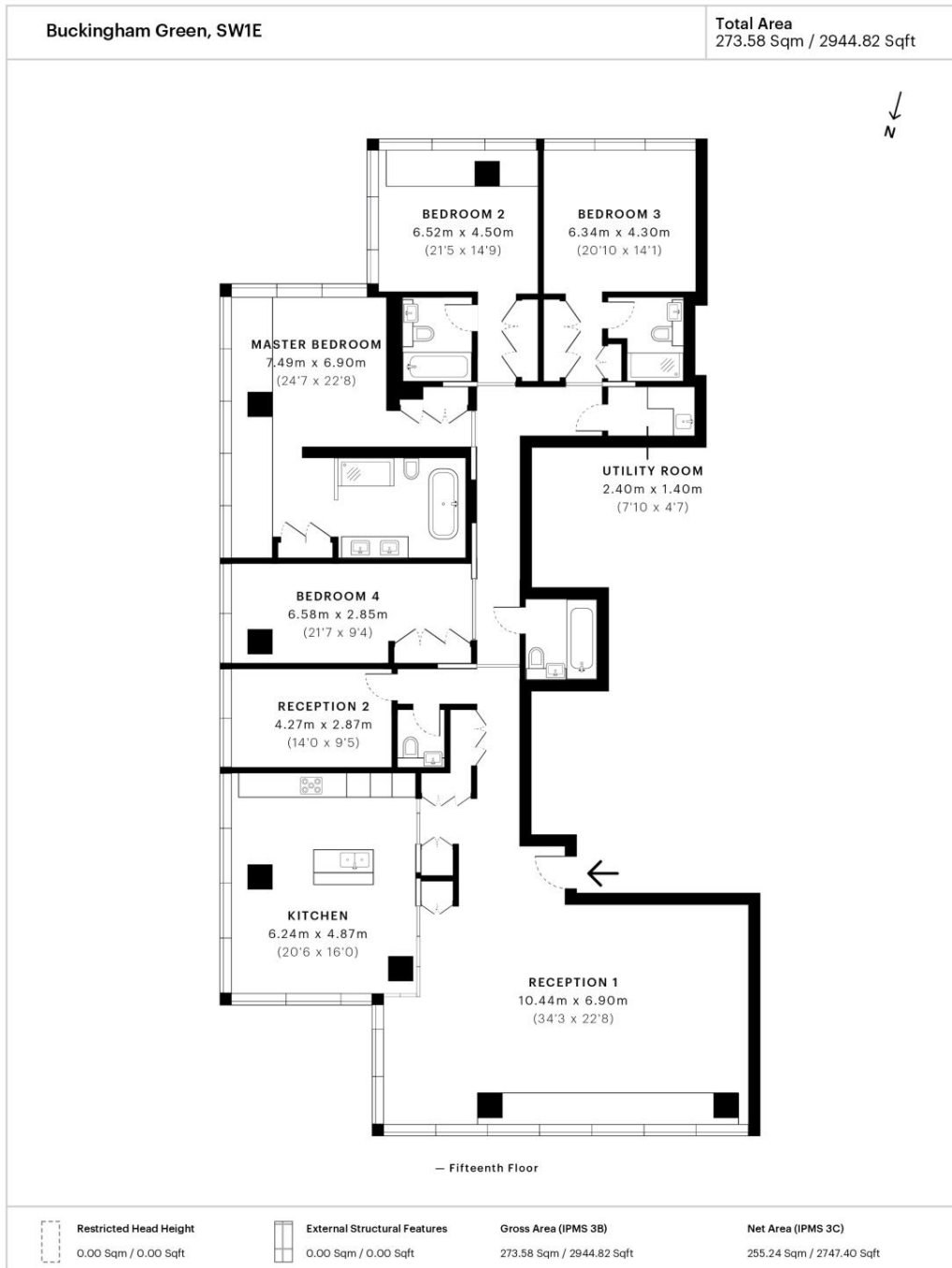
Please note that due to building works in the area, the skyline views from the apartments may have changed from those shown in the marketing pictures.

As well as paying the rent, you may also be required to make some additional permitted payments. Please visit jll.co.uk/fees for details of fees which may be payable when renting a property. If your tenancy does not qualify as an AST, additional fees may apply.

- 4 Double bedrooms
- 3 Bathrooms (2 en suite)
- 1 Shower room (en suite)
- Guest cloakroom
- Reception room
- Kitchen/dining room
- Media room
- Fifteenth floor
- Lift
- 24 Hour concierge

Floorplan

sq ft | sq m



Spec floor plan captured for JLL, Knightsbridge on 03/12/2018 using 79,001,514 laser scan points, accurate to +/- 3cm. Produced in accordance with Royal Institution of Chartered Surveyors Property Measurement Standards, incorporating International Property Measurement Standard (IPMS). If you intend to rely on any measurement in a transaction you should perform your own checks. Plot/Gardens illustrative only and excluded from all area calculations. SpecID: 5c013da81ab1ad19abd11594

Restricted Head Height = Limited use area under 1.5m. **External Structural Features** = Balconies, terraces or verandas or similar. **IPMS 3B** = gross internal area measured from the internal faces of external walls, including walls/obstructions and External Structural Features, excluding stairwell area above/below the ground floor. **IPMS 3C** = net area of IPMS 3B excluding internal walls/obstructions and stairwell area above/below the ground floor. **Total Area** = IPMS 3B gross area + stairwell area above/below ground floor of 0.00 Sqm / 0.00 Sqft.



Knightsbridge
174 Brompton Road,
London SW3 1HP
+4420 7306 1600
lettingsknightsbridge@eu.jll.co

Urban living, your way.

jll.co.uk/residential

© 2019 Jones Lang LaSalle IP, Inc. All rights reserved. All information contained herein is from sources deemed reliable; however, no representation or warranty is made to the accuracy thereof.

