



Blackfriars Road, London SE1

Price £1,575 per week - Furnished







Description

This stunning 2 bedroom apartment comprises of approx. 1,645 sq ft including open plan kitchen reception room, master bedroom with built in wardrobes and en suite, further double bedroom with fitted wardrobes, luxury bathroom. The apartment further benefits from a large sky garden.

The development boasts facilities including a 24 hour concierge, executive residents lounge, spa, fitness suite, screening room and wine cellar. The location of One Blackfriars provides excellent access to all parts of London. Transport links including City Thames link, Blackfriars, Southwark and Waterloo are readily available providing access throughout the City.

As well as paying the rent, you may also be required to make some additional permitted payments. If your tenancy does not qualify as an AST, additional fees may apply. Please visit jll.co.uk/fees for details of fees which may be payable when renting a property.

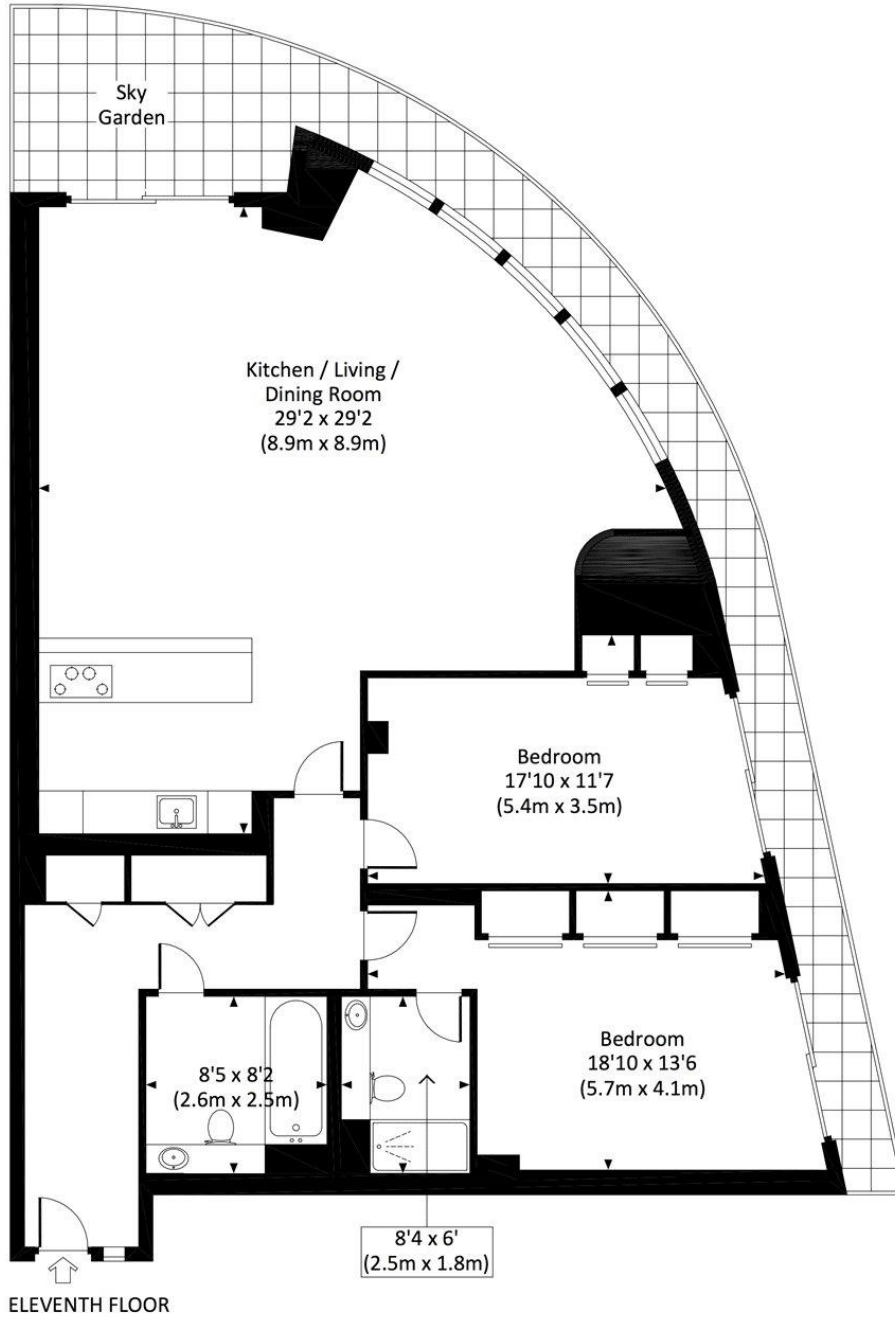
- 2 Bedrooms
- 2 Bathrooms
- 11th Floor
- Sky garden
- On-site leisure facilities including; fitness suite, spa and resident's lounge
- Golf simulator & screening room
- 0.4 mile from London Waterloo East station
- Approx. 1425 sq ft (132.4 sq m)
- Furnished
- EPC: B

Floorplan

1,425 sq ft | 132 sq m

ONE BLACKFRIARS, SE1

Approx. gross internal area
1425 Sq Ft. / 132.4 Sq M.



All measurements have been made in accordance with RICS Code of Measuring Practice which are approximate only and only for illustrative purposes. For the avoidance of doubt, Dowling Jones Design shall not be liable for any reliance on these measurements. © 2018 www.dowlingjones.com 020 7610 9933

City
25 Walbrook The Walbrook
Building,
London EC4N 8AF
+4420 7337 4000

Urban living, your way.

jll.co.uk/residential

© 2019 Jones Lang LaSalle IP, Inc. All rights reserved. All information contained herein is from sources deemed reliable; however, no representation or warranty is made to the accuracy thereof.

