

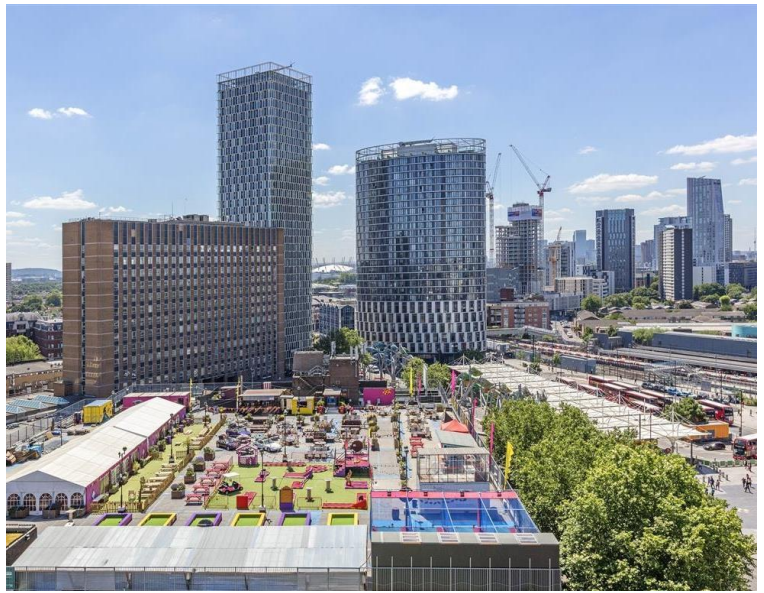


# Great Eastern Road, London E15

Asking price £475,000 Leasehold







## Description

A fantastic 14th floor one bedroom apartment comprising 539 sq ft of exceptional living space, located in one of London's most sought after developments, Legacy Tower E15.

Legacy Tower is a striking 31-storey tower which will offer dual aspect views of both the Queen Elizabeth Olympic Park and Westfield's Stratford City. Residents will benefit from access to a 24 hour concierge service and a private residents gymnasium. Bespoke fixtures & fittings throughout and finished to the highest standards.

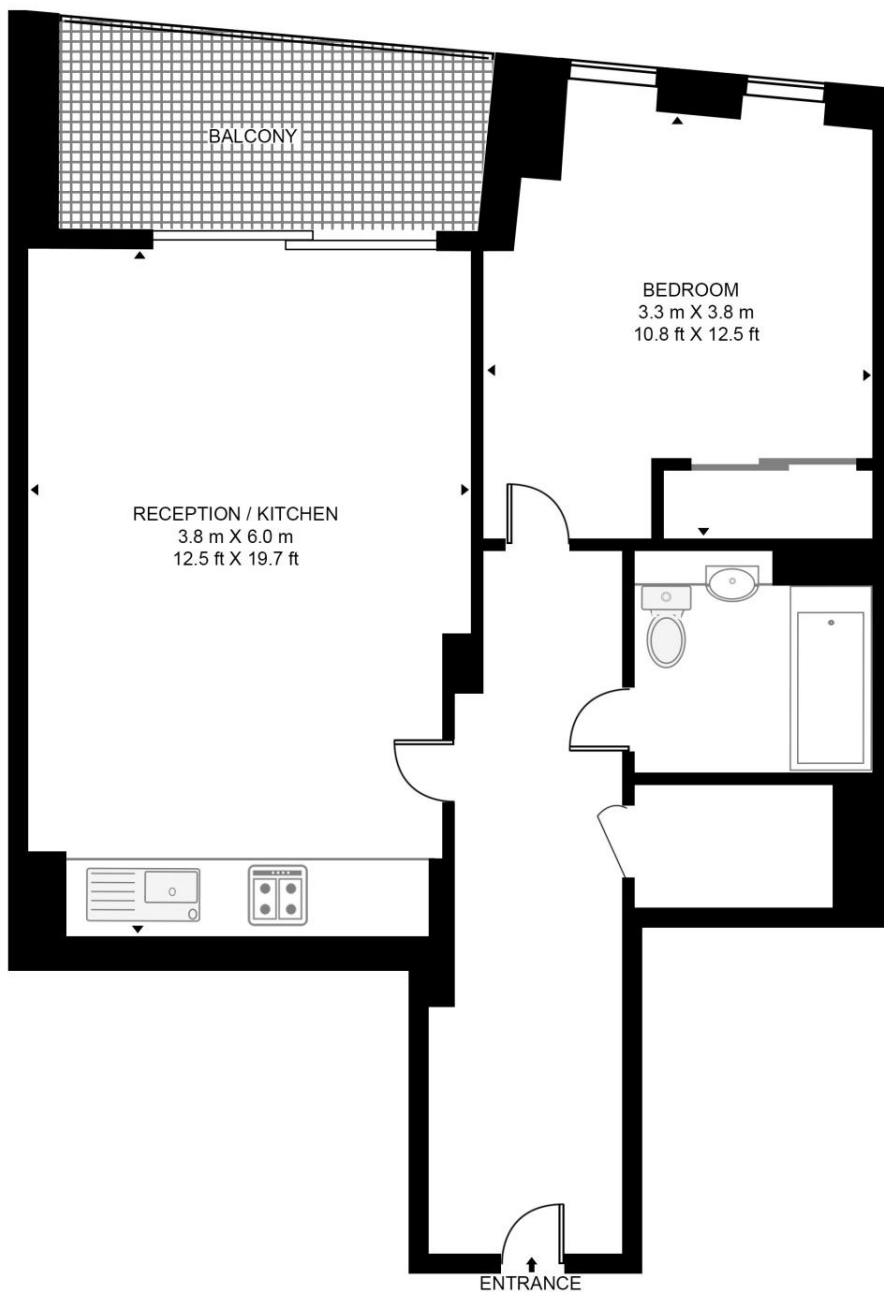
- 14th Floor
- Private Balcony
- 24 Hour Concierge
- Private Residents' Gymnasium
- Under-Floor Heating
- High Speed Broadband
- Secured Bicycle Storage
- 0.1 Mile from Stratford Station ( Jubilee, Central, DLR, Overground and Elizabeth Line)
- Easily Accessible To Westfield Shopping Centre

# Floorplan

539 sq ft | 50 sq m

## LEGACY TOWER

APPROXIMATE GROSS INTERNAL FLOOR AREA 541 SQ.FT (50.3 SQ.M)



Stratford  
5 Station Street,  
London E15 1DA  
+4420 3147 1500  
Lettingsstratford@eu.jll.com

*Urban living, your way.*

[jll.co.uk/residential](http://jll.co.uk/residential)

© 2019 Jones Lang LaSalle IP, Inc. All rights reserved. All information contained herein is from sources deemed reliable; however, no representation or warranty is made to the accuracy thereof.

