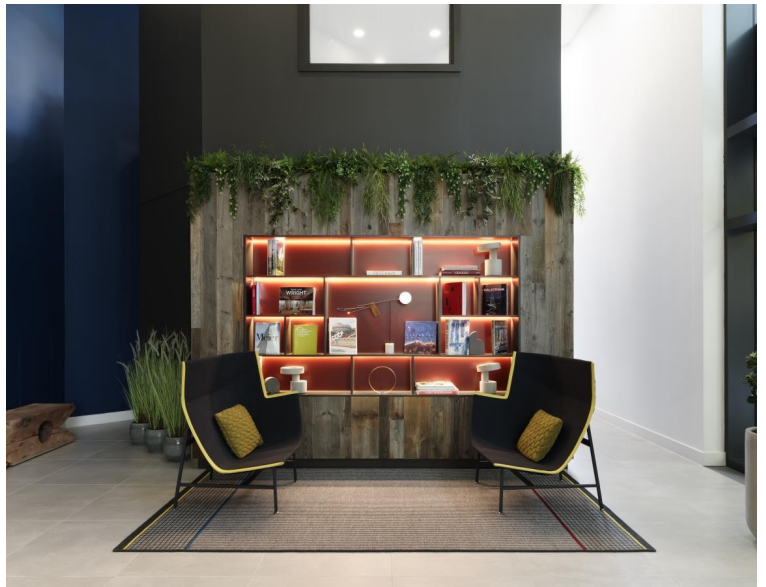
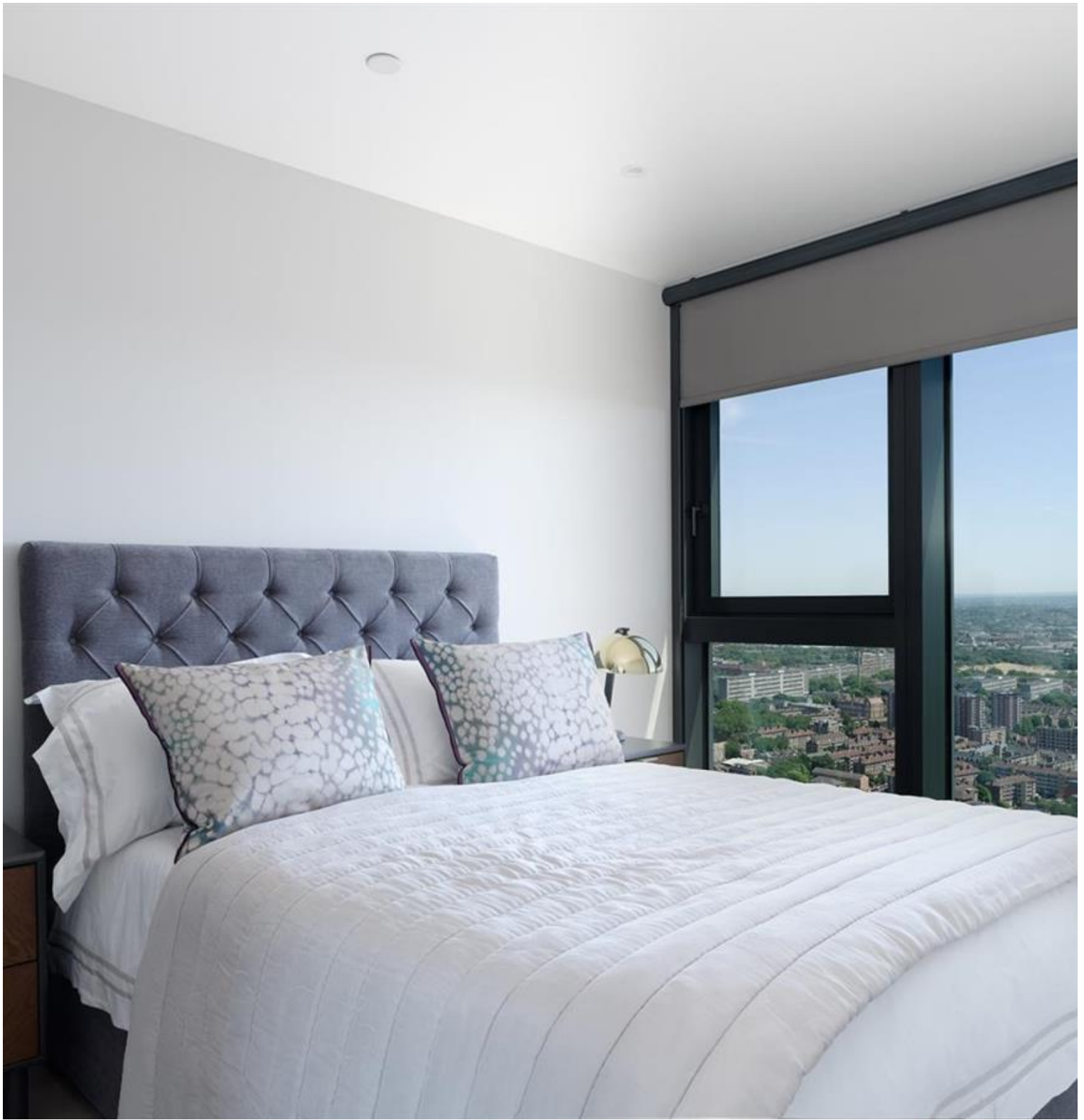


Churchyard Row, London SE11

Price £3,300 per month - Furnished, Part
Furnished







Description

A selection of two-bedroom apartments available in UNCLE Elephant and Castle, one of London's tallest developments. Offering contemporary living, these stunning apartments have been completed to an exceptional standard. Both bedrooms contain large fitted wardrobes, two bathrooms with one ensuite, stylish kitchen integrated Siemens appliances, large balconies with excellent views of the London Skyline, ample storage and are offered either furnished or unfurnished. UNCLE has a partnership with Made.com and all our furnished flats are carefully designed with the best Made.com selection. Residents have access to a 24 hour residents' gym and a 45th floor sky lounge with panoramic views of the iconic London skyline with access to high speed fibre broadband up to 1GB.

UNCLE Elephant & Castle has a 24/7 on site team that ensures that living with UNCLE is easy, safe and helpful. A community you can be as much - or as little - a part of as you desire. UNCLE is well situated for the City and central London and just 2 minutes' walk from Elephant & Castle station, providing access to the Northern line, Bakerloo line and Thameslink.

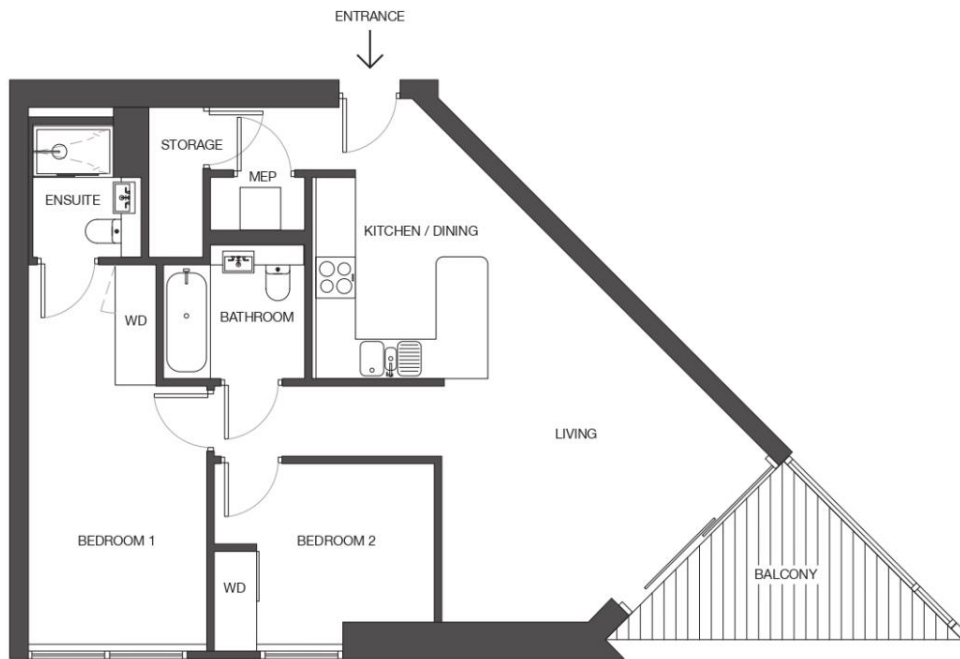
As well as paying the rent, you may also be required to make some additional permitted payments. If your tenancy does not qualify as an AST, additional fees may apply. Please visit jll.co.

- 24/7 on-site UNCLE team
- 45th floor sky lounge with exceptional views
- Residents lounge, work space, bar & kitchen areas
- Residents gym
- High Speed Fibre Broadband up to 1GB in communal areas
- Secure bike storage available
- 0.2 Elephant & Castle station
- Parking available at additional cost
- EPC: B

Floorplan

sq ft | sq m

UNCLE ELEPHANT & CASTLE STANDARD 2 BED



AVERAGE SIZE: 70m²

MEP - Meter cupboard
WD - Wardrobe

*Floorplan is for illustrative purposes only and is not to scale.
Dimensions of actual unit may vary slightly.

UNCLE

Mayfair and Marylebone
JLL, 30 Warwick Street,
London W1B 5NH
+44 207 399 5550
tenancymanagement@eu.jll.c

Urban living, your way.

jll.co.uk/residential

© 2019 Jones Lang LaSalle IP, Inc. All rights reserved. All information contained herein is from sources deemed reliable; however, no representation or warranty is made to the accuracy thereof.

