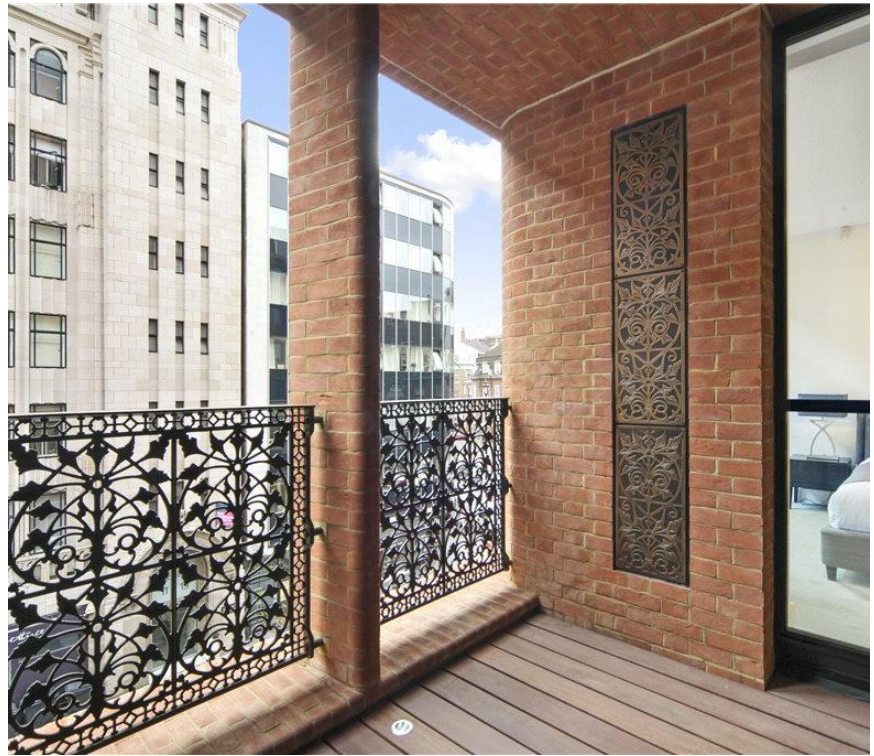




Artillery Row, London SW1P

Price £750 per week - Furnished

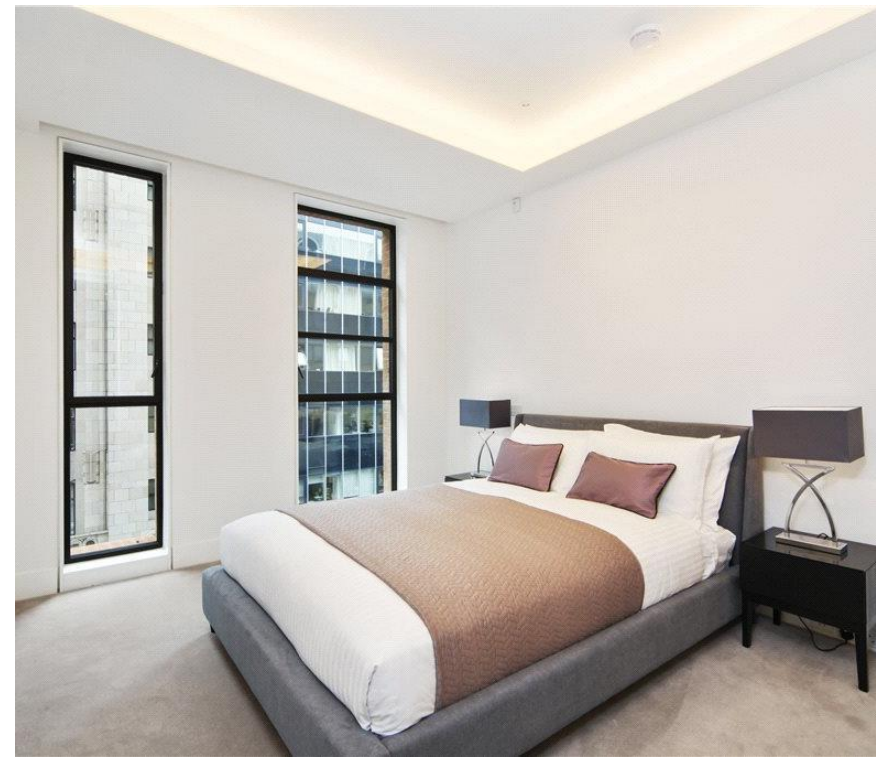




Description

A luxurious flat on the second floor of this prestigious development in the heart of Westminster. The property comprises one double bedroom, one bathroom, reception room with dining area and a fully fitted, open plan kitchen. The flat is presented to an excellent standard and further benefits include oak flooring in the reception room, comfort cooling, a balcony and concierge. This striking building is conveniently located for the many shopping and transport facilities of St. James's Park and Westminster.

As well as paying the rent, you may also be required to make some additional permitted payments. Please visit jll.co.uk/fees for details of fees which may be payable when renting a property. If your tenancy does not qualify as an AST, additional fees may apply.

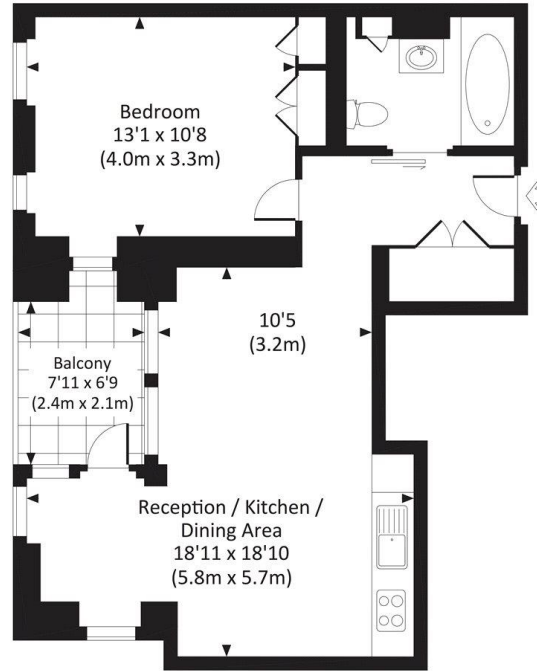


- 1 Double bedroom
- 1 Bathroom
- Reception room
- Open plan kitchen
- Second floor
- Balcony
- Lift
- Porter
- Furnished
- Approx. 556 sq ft (51 sq m)

Floorplan

556 sq ft | 52 sq m

Approx. gross internal area
556 Sq.Ft. / 51.7 Sq.M.



SECOND FLOOR

© JLL All measurements have been made in accordance with BIC's Code of Measuring Practice which are approximate only and only for illustrative purposes. For the avoidance of doubt, Dowling Jones Design shall not be liable for any reliance on these measurements. © 2015 www.dowlingjones.com 020 7510 9933

Knightsbridge
174 Brompton Road,
London SW3 1HP
+4420 7306 1600
lettingsknightsbridge@eu.jll.co

Urban living, your way.

jll.co.uk/residential

© 2019 Jones Lang LaSalle IP, Inc. All rights reserved. All information contained herein is from sources deemed reliable; however, no representation or warranty is made to the accuracy thereof.

