



## Casson Square, London SE1

Price £1,600 per week - Furnished







## Description

A truly spectacular 3 bedroom apartment in the stunning 8 Casson Square, part of Southbank Place, a luxury development moments from Waterloo Station, SE1.

Offered fully furnished, this luxury 3 bedroom apartment is situated on the 21st floor and boasts stunning West facing views over the Thames. The apartment comprises 3 double bedrooms with large fitted wardrobes to bedrooms 1 and 2, spacious living area with a fully fitted open plan kitchen to include Miele and Siemens appliances, 3 contemporary bathrooms, wood flooring and excellent storage space. The property has a high specification throughout featuring comfort cooling, underfloor heating and smart home technology.

The development benefits from top of the range amenities which include an on-site gym, swimming pool with spa, exclusive resident's lounge and 24-hour concierge. 8 Casson Square is in the heart of Southbank and on the doorstep of Waterloo Station (0.2 miles) and moments from the iconic London Eye. The City of London is within easy reach as is London's famous West End.

As well as paying the rent, you may also be required to make some additional permitted payments.

- 3 Bedrooms
- 3 Bathrooms
- 21st Floor
- Balcony
- West facing views towards The Thames
- Luxury fitted kitchen with Miele appliances
- 24 hour concierge
- Approx. 1241 sq ft (115 sq m)
- 0.2 mile from Waterloo Station
- Luxury residents facilities

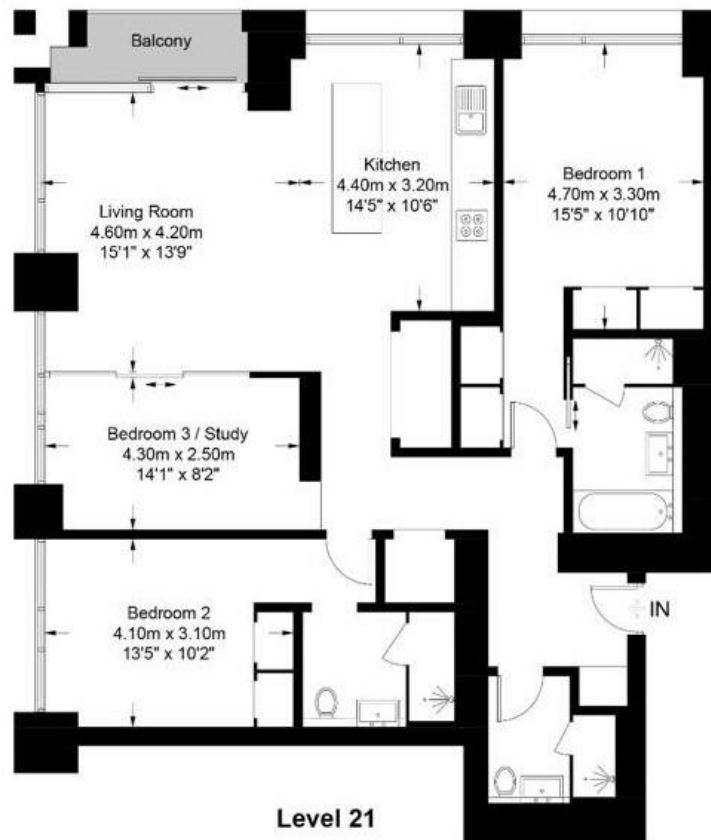
# Floorplan

1,241 sq ft | 115 sq m

## Casson Square, SE1



Approximate Gross Internal Area = 1241 sq ft / 115 sq m



This plan is for layout guidance only. Not drawn to scale unless stated. Windows and door openings are approximate. Whilst every care is taken in the preparation of this plan, please check all dimensions, shapes and compass bearings before making any decisions reliant upon them. (ID796880)

City  
25 Walbrook The Walbrook  
Building,  
London EC4N 8AF  
+4420 7337 4000

*Urban living, your way.*

[jll.co.uk/residential](http://jll.co.uk/residential)

© 2019 Jones Lang LaSalle IP, Inc. All rights reserved. All information contained herein is from sources deemed reliable; however, no representation or warranty is made to the accuracy thereof.

