



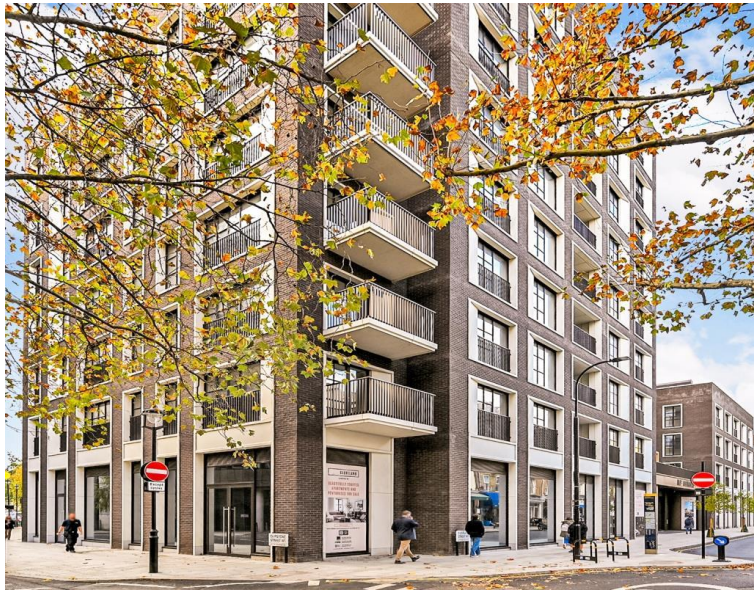
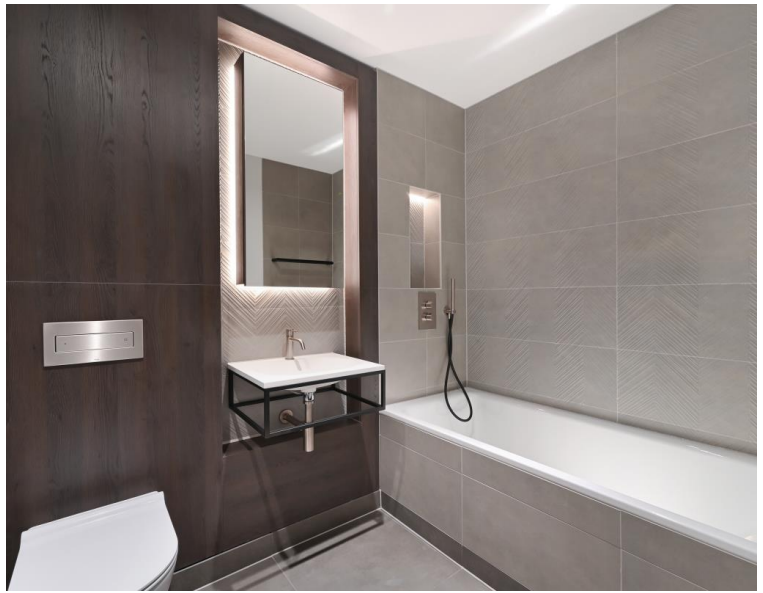
## Cleveland Street, London W1T

Price £1,200 per week - Furnished









## Description

101 on Cleveland is a brand new boutique collection of apartments inspired by New York-style loft living and designed with contemporary life in mind. 101 is located within the heart of Fitzrovia, perfectly located for endless list of independent retailers and eateries nearby as well as benefitting from being a short distance from Marylebone Village and the West End.

This one bedroom apartment has been crafted to the highest of specifications with a spacious and open plan living space featuring an Italian designed Kitchen with integrated Miele appliances, well-proportioned bedroom with built in wardrobes and elegant bathroom suite with rainfall shower. The apartment further benefits from engineered timber chevron flooring throughout, comfort cooling, underfloor heating and a private balcony.

The development provides residents with the highest quality on site facilities, including a 24 hour concierge team, residents gym & wellness suite, residents lounge, business suite, private dining space and landscaped roof top providing a tranquil space to relax after a busy day.

\*Images are representative, floor plans and videos are available upon request.

- Residents Gym
- 24 hour concierge
- Landscape roof terrace
- Screening Room
- Business Suite
- Residents Lounge
- Private dining facilities
- High specification throughout
- 0.2 Miles from Goode Street and Warren Street Stations
- EPC: B

# Floorplan

600 sq ft | 56 sq m

On Cleveland, W1T  
Approximate Gross Internal Area  
54.92 sq m / 591 sq ft

( CH = Ceiling Heights )



This plan is not to scale. It is for guidance and not for valuation purposes.  
All measurements and areas are approximate only, and have been prepared in accordance with the current edition of the RICS Code of Measuring Practice.  
© Fulham Performance

Mayfair and Marylebone  
JLL, 30 Warwick Street,  
London W1B 5NH  
+44 207 399 5550  
tenancymanagement@eu.jll.c

*Urban living, your way.*

[jll.co.uk/residential](http://jll.co.uk/residential)

© 2019 Jones Lang LaSalle IP, Inc. All rights reserved. All information contained herein is from sources deemed reliable; however, no representation or warranty is made to the accuracy thereof.

