



Great Portland Street, London W1W

Price £895 per week - Furnished







Description

A delightful two bedroom apartment benefitting from plenty of natural light and located within close proximity of Oxford Street. This large apartment is located on the second floor (with lift) of a purpose built building and benefits from two double bedrooms, two bathrooms, a spacious dual aspect reception room and fitted kitchen.

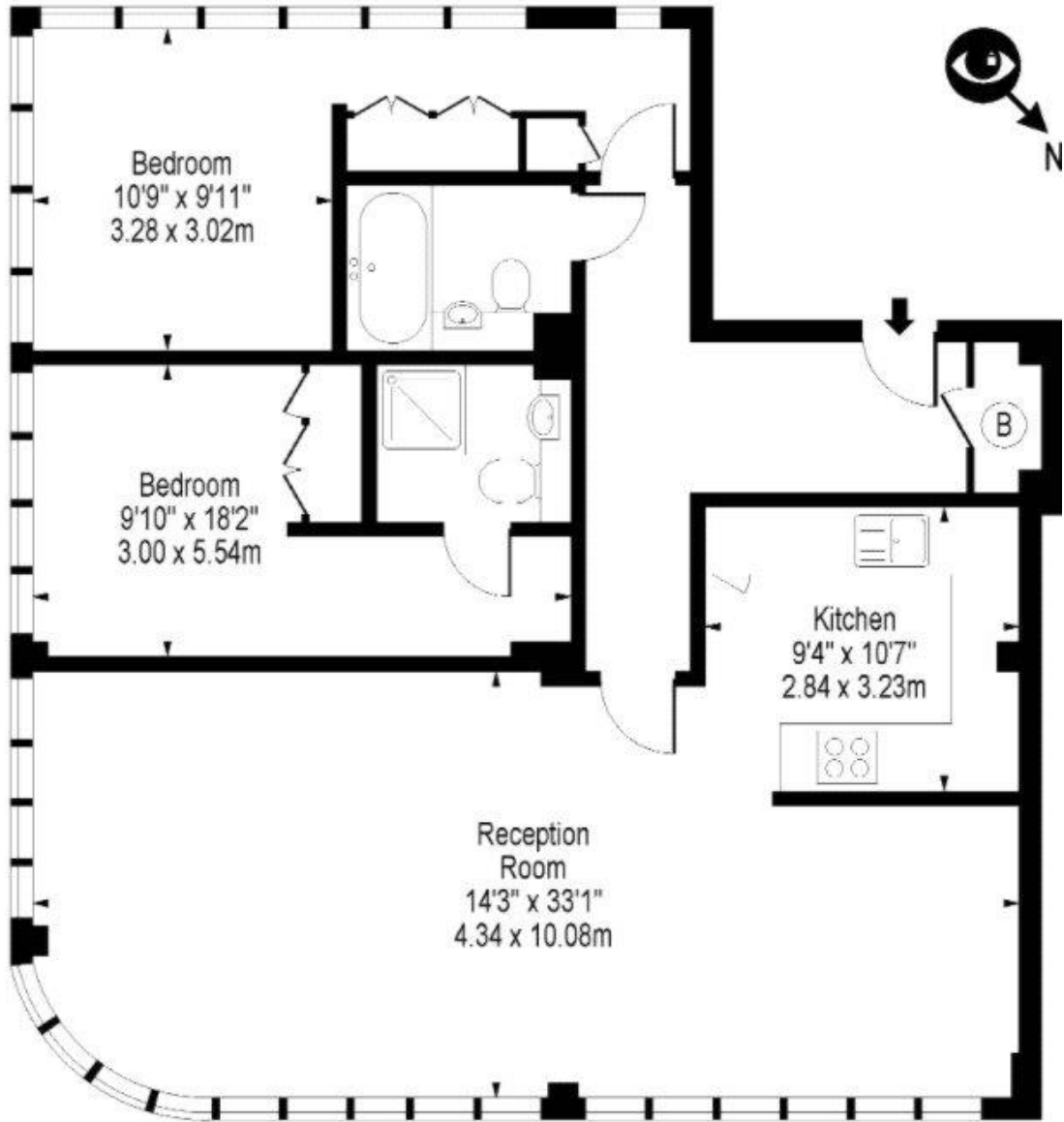
As well as paying the rent, you may also be required to make some additional permitted payments. If your tenancy does not qualify as an AST, additional fees may apply. Please visit jll.co.uk/fees for details of fees which may be payable when renting a property.

- Master bedroom with en suite shower room
- Further double bedroom
- Family bathroom
- Modern fitted kitchen
- Large reception/ dining room
- Second floor
- Lift
- Furnished
- Approx: 1060 sq ft (98 sq m)
- EPC:B

Floorplan

1,060 sq ft | 99 sq m

Great Portland Street, W1W 7LR



Second Floor

Approx Gross Internal Area 1060 Sq Ft - 98.47 Sq M

Mayfair and Marylebone
JLL, 30 Warwick Street,
London W1B 5NH
+44 207 399 5550
tenancymanagement@eu.jll.c

Urban living, your way.

jll.co.uk/residential

© 2019 Jones Lang LaSalle IP, Inc. All rights reserved. All information contained herein is from sources deemed reliable; however, no representation or warranty is made to the accuracy thereof.

