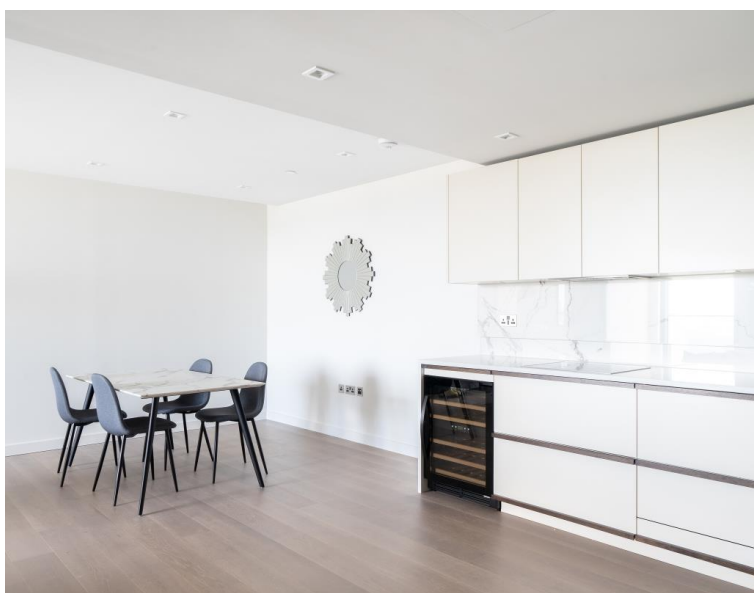


Newcastle Place, London W2

Asking price £1,600,000 Leasehold







Description

A luxury two-bedroom apartment in Westmark Tower, part of the new West End Gate development in Paddington. With enviable views from the 19th floor, the property comprises two double bedrooms (one en-suite), second family sized bathroom, open plan kitchen and living room leading to the private balcony. Other benefits include 24-hour concierge, lift, gym, swimming pool, cinema, gym, meeting room, residents lounge and private hire dining area. West End Gate by St Edward is built to the highest quality. Paddington mainline and underground stations are just a short walk away.

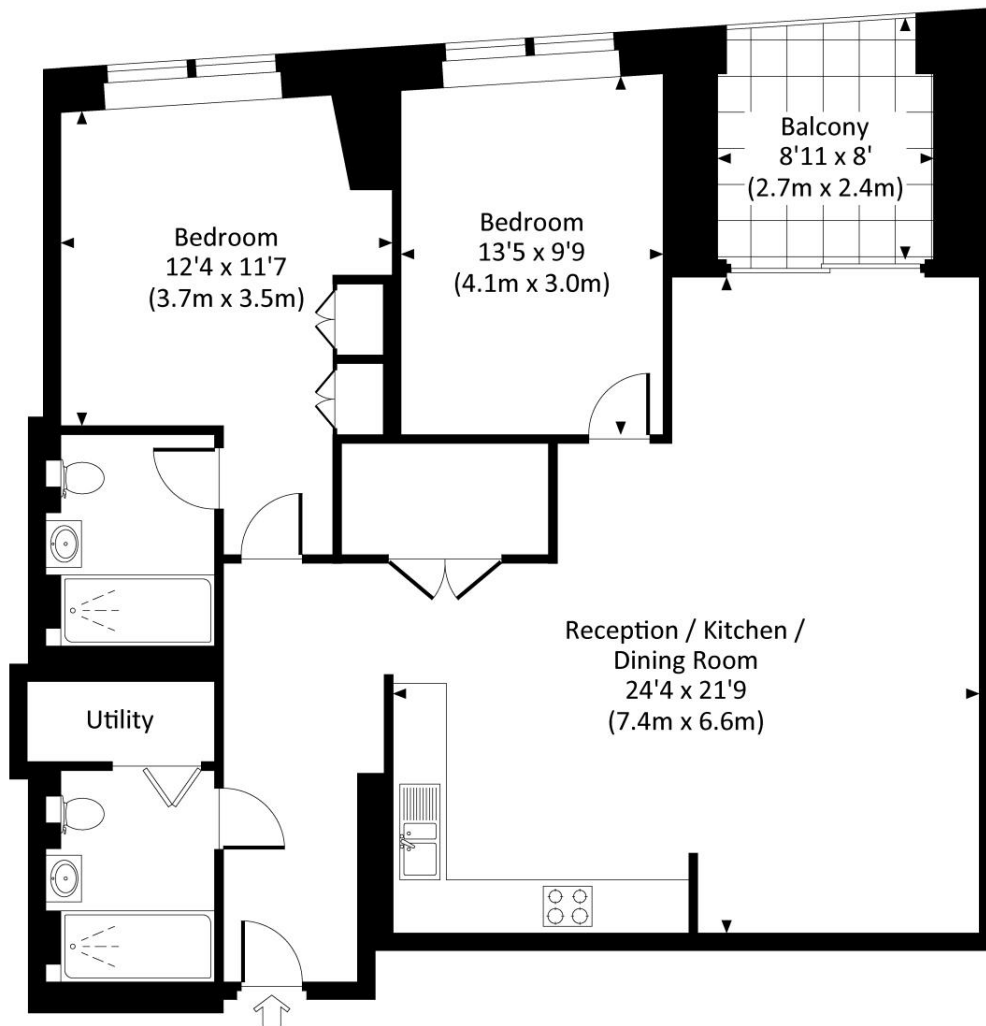
- 2 Bedrooms
- 2 Bathrooms
- Private balcony
- 24 Hour concierge
- Resident only leisure facilities
- Approx 1005 sq ft (93 sq m)
- EPC: B

Floorplan

1,009 sq ft | 94 sq m

WESTMARK TOWER, W2

Approx. gross internal area
1005 Sq Ft. / 93.4 Sq M.



NINETEENTH FLOOR

All measurements are approximate and for guidance and illustrative purposes only.
Photography and Floor Plans by www.rayco.london - +44 7793 974 209

Kensington
387 Kensington High Street,
London W14 8QA
+4420 7087 5696
lettingskensington@eu.jll.com

Urban living, your way.

jll.co.uk/residential

© 2019 Jones Lang LaSalle IP, Inc. All rights reserved. All information contained herein is from sources deemed reliable; however, no representation or warranty is made to the accuracy thereof.

