

Edgware Road, London W2

Price £595 per week - Furnished





Description

A stylish seventh floor studio apartment (with lift) in this well maintained building on Edgware Road. The property comprises bedroom/reception room, bathroom and a fully fitted kitchen. Forset Court benefits from 24 hour concierge and it is conveniently located close to the many transport and shopping amenities of Edgware Road and Marble Arch.

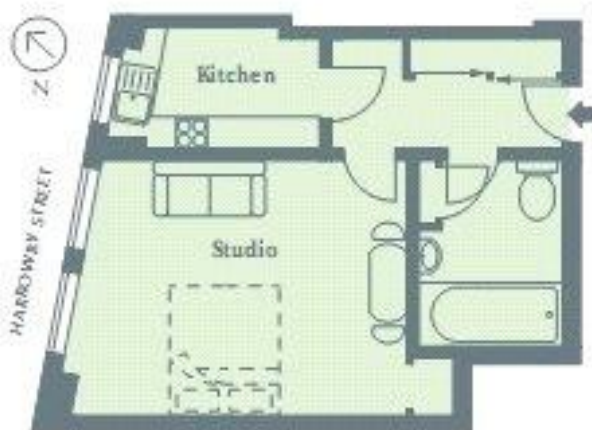
As well as paying the rent, you may also be required to make permitted payments. Please visit jll.co.uk/fees for details of fees which may be payable when renting a property. If your tenancy does not qualify as an AST, additional fees may apply.

- Reception/bedroom
 - Bathroom
 - Fully fitted kitchen
 - 24 Hour concierge
 - Approx. 321 sq ft (97 sq m)
 - Furnished
 - EPC: C
-

Floorplan

321 sq ft | 30 sq m

SEVENTH FLOOR



Approx. Gross Internal Area - 97.84 sq m / 321 sq ft

Studio	4.50 x 3.35 m	14'9" x 11"
Kitchen	2.74 x 1.80 m	9' x 5'8"

Mayfair and Marylebone
JLL, 30 Warwick Street,
London W1B 5NH
+44 207 399 5550
tenancymanagement@eu.jll.c

Urban living, your way.

jll.co.uk/residential

© 2019 Jones Lang LaSalle IP, Inc. All rights reserved. All information contained herein is from sources deemed reliable; however, no representation or warranty is made to the accuracy thereof.

