



Halsey Street

KNIGHTSBRIDGE
SW3 2PT

A CHARMING FAMILY
HOUSE LOCATED
IN THE HEART OF
UPPER CHELSEA



A charming family house located on the western terrace of this well-known street in the heart of upper Chelsea. It has been in the same ownership for over fifty years and was the subject of extensive refurbishment seven years ago, including the addition of a conservatory dining area within the side return and air conditioning to all bedrooms.



LOCATION

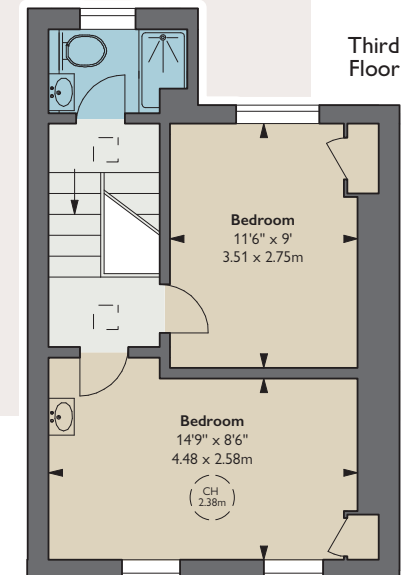
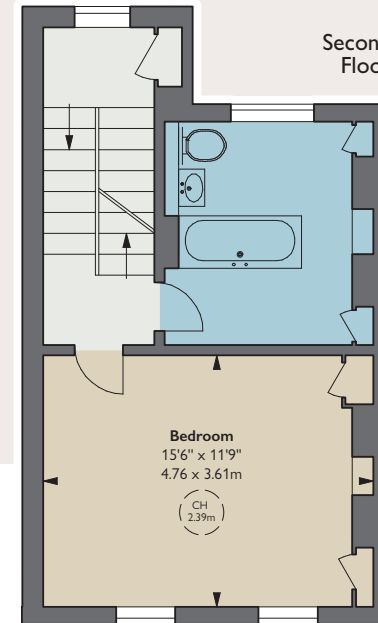
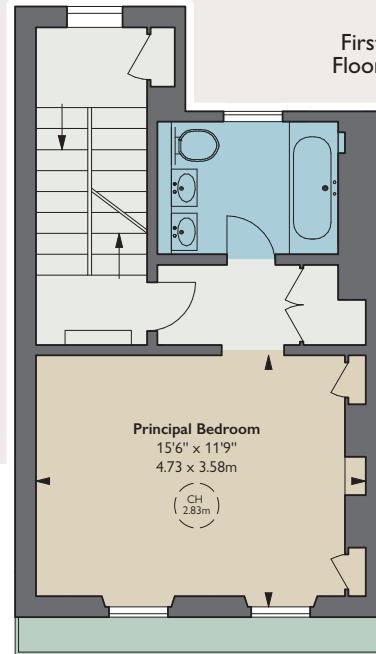
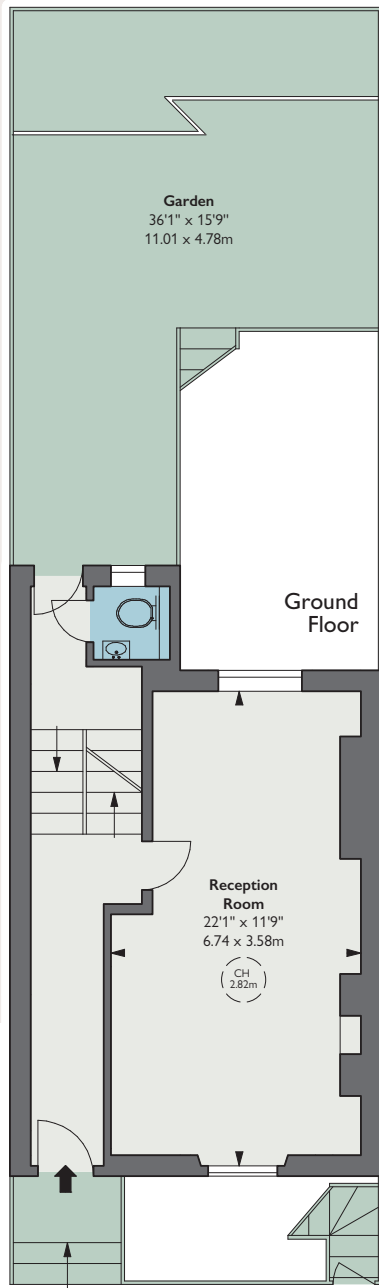
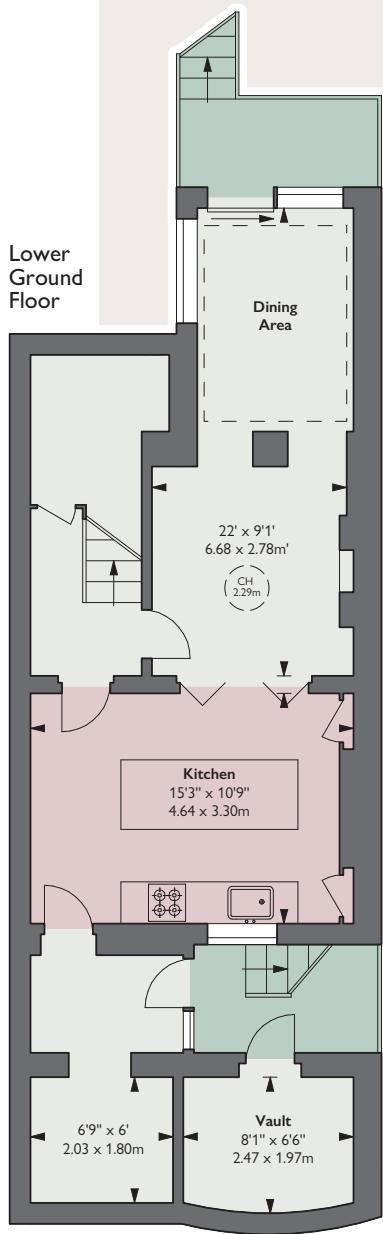
Halsey Street is a quintessentially early Victorian parade of period houses with an unusually wide thoroughfare allowing for easy parking. It connects Cadogan Street with Milner Street and lies to the west of Sloane Square and south of Knightsbridge.



ACCOMMODATION

- Four bedrooms
- Two bathrooms
- One shower room
- Cloakroom
- Kitchen / Breakfast room
- Utility area
- Dining room
- Drawing room
- Balcony
- Garden





TERMS

Price £3,750,000
 Tenure Freehold
 Council Tax Band H
 EPC Rating C
 Local Authority
 Royal Borough of
 Kensington and Chelsea

AREA

Approximate Gross
 Internal Area
 2,022 sq ft / 187.84 sq m

Vault Area
 52 sq ft / 4.83 sq m

Total Area
 2,074 sq ft / 192.67 sq m



© Alex Wraslip Photography Ltd.

These particulars are for general information only and do not constitute any part of an offer or contract. All statements contained therein are made without responsibility on the part of the vendors or lessors and are not to be relied upon as statement or representation of fact. Intending purchasers or lessees must satisfy themselves, by inspection, or otherwise, as to the correctness of each of the statements or dimensions contained in these particulars. This floorplan is for guidance only and not for valuation purposes. 26/07/23 JLL-230426B-04MS

Floorplan for guidance only, not to scale or valuations purposes. It must not be relied upon as a statement of fact. All measurements and areas are approximate and have been prepared in accordance with the current edition of the RICS Code of Measuring Practice.

THE BROCHURE
WRASLIP

JLL Knightsbridge

174 Brompton Road, London SW3 1HP
 020 7306 1610

JLL Chelsea

2 Cale Street, London SW3 3QU
 020 7399 5010

jll.co.uk/primecollection

