



Grove Road, London SE8

Price £2,300 per month - Furnished







Description

JLL are pleased to offer this stunning, two bedroom apartment to the lettings market. This lovely apartment offers a high standard of finish and is light and airy throughout.

It briefly comprises entrance hallway, spacious open plan reception room leading to a large, private balcony and fantastic modern kitchen with a range of integrated appliances and utility cupboard, two double bedrooms with the master having a built in wardrobe and ensuite bathroom, there is also a further family bathroom. The property is available from the 21 July 2023 and is offered furnished.

As well as paying the rent, you may also be required to make some additional permitted payments. If your tenancy does not qualify as an AST, additional fees may apply. Please visit jll.co.uk/fees for details of fees which may be payable when renting a property.

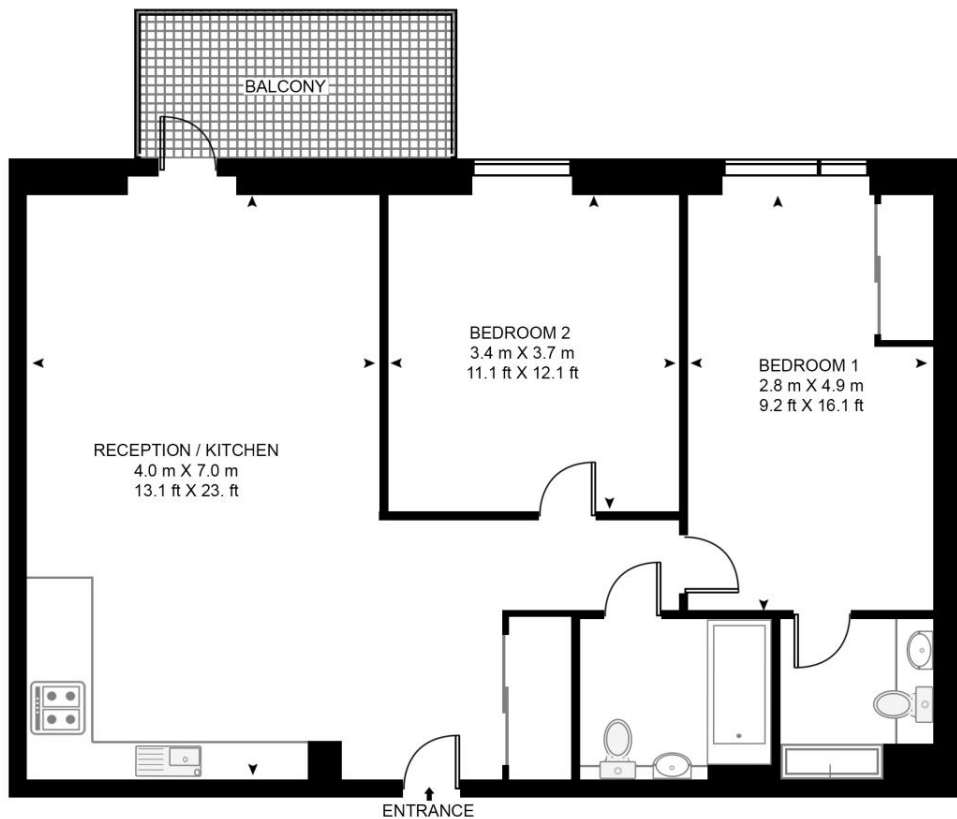
- 2 Bedrooms
- 2 Bathrooms
- Light & airy
- Available from the 21 July 2023
- Large Balcony
- Furnished
- 780 Approx Sq Ft
- EPC: B

Floorplan

sq ft | sq m

MERANTI APARTMENTS, GROVE ROAD

APPROXIMATE GROSS INTERNAL FLOOR AREA 784 SQ.FT (72.8 SQ.M)



SECOND FLOOR

HDVA

This floor plan has been defined by the RICS Code of Measurement. This floor plan and all others are for approximate representative purposes only and upon usage is agreed to as such by the client.

WWW: hdvirtualart.com | TEL: 0203.974.1567 | EMAIL: info@hdvirtualart.com

Greenwich
22 College Approach,
London SE10 9HY
02088589986
lettingsgreenwich@eu.jll.com

Urban living, your way.

jll.co.uk/residential

© 2019 Jones Lang LaSalle IP, Inc. All rights reserved. All information contained herein is from sources deemed reliable; however, no representation or warranty is made to the accuracy thereof.

