



Alderney Street, London SW1V

Price £550 per week - Furnished





Description

A wonderful first floor flat in this converted terrace house close to the amenities of Victoria. The property consists of one double bedroom with separate dressing room/study, one bathroom, reception room and a fully fitted kitchen. The property is light and bright and it is available on a furnished basis.

As well as paying the rent, you may also be required to make permitted payments. Please visit jll.co.uk/fees for details of fees which may be payable when renting a property. If your tenancy does not qualify as an AST, additional fees may apply.

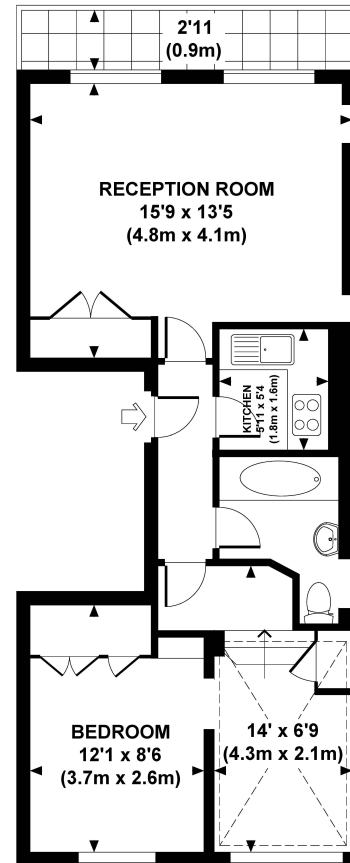
- Double bedroom
- Dressing room/study
- Bathroom
- Reception room
- Fully fitted kitchen
- Approx. 516 sq ft (47 sq m)
- Furnished
- EPC: C



Floorplan

516 sq ft | 48 sq m

Approx. gross internal area
516 Sq.Ft. / 47.9 Sq.M.



FIRST FLOOR

ESP All measurements are approximate and for illustration purposes only as defined by the RICS Code of Measuring Practice © 2013 Dowling Jones Design www.dowlingjones.com 020 7610 9933

Knightsbridge

174 Brompton Road,
London SW3 1HP
+4420 7306 1600

lettingsknightsbridge@eu.jll.co

Urban living, your way.

jll.co.uk/residential

© 2019 Jones Lang LaSalle IP, Inc. All rights reserved. All information contained herein is from sources deemed reliable; however, no representation or warranty is made to the accuracy thereof.

