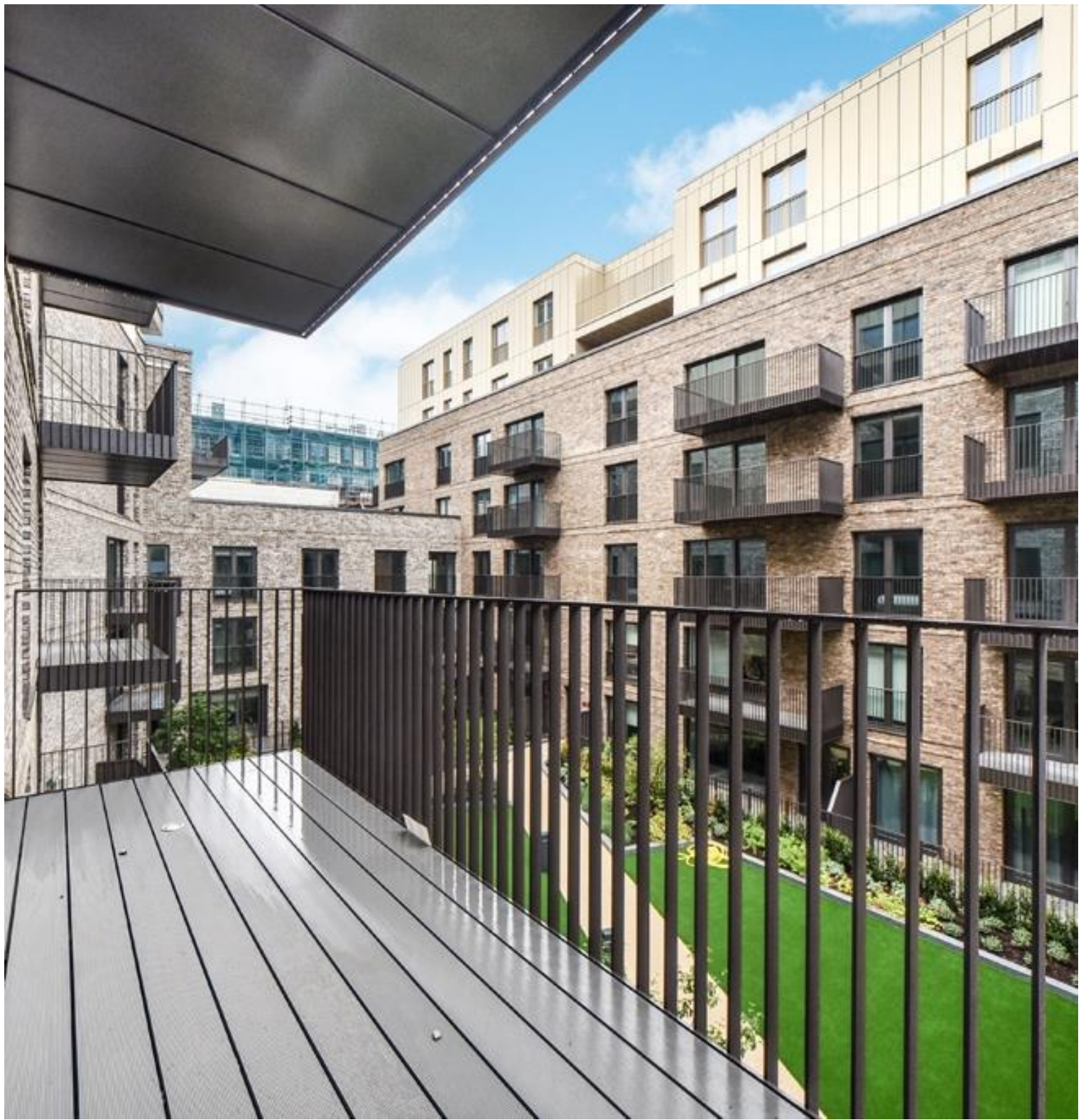




Cendal Crescent, London E1

Price £695 per week - Furnished







Description

A stunning 2 bedroom property in the popular Georgette Apartments, part of the Silk District development, E1.

This double aspect apartment is offered fully furnished and boasts a spacious reception area with access onto private balcony overlooking the courtyard, fully fitted kitchen, two double bedrooms with large fitted wardrobes to master, two luxury bathrooms, tiled flooring and excellent storage space.

The Silk District is a development from Mount Anvil and offers its residents fantastic amenities which include 24 hour concierge, on site gym, cinema room, rooftop gardens and resident's lounge. The development is within easy reach of the City of London and in the heart of the Whitechapel regeneration area, approximately 0.3 miles from Whitechapel Underground / Crossrail station.

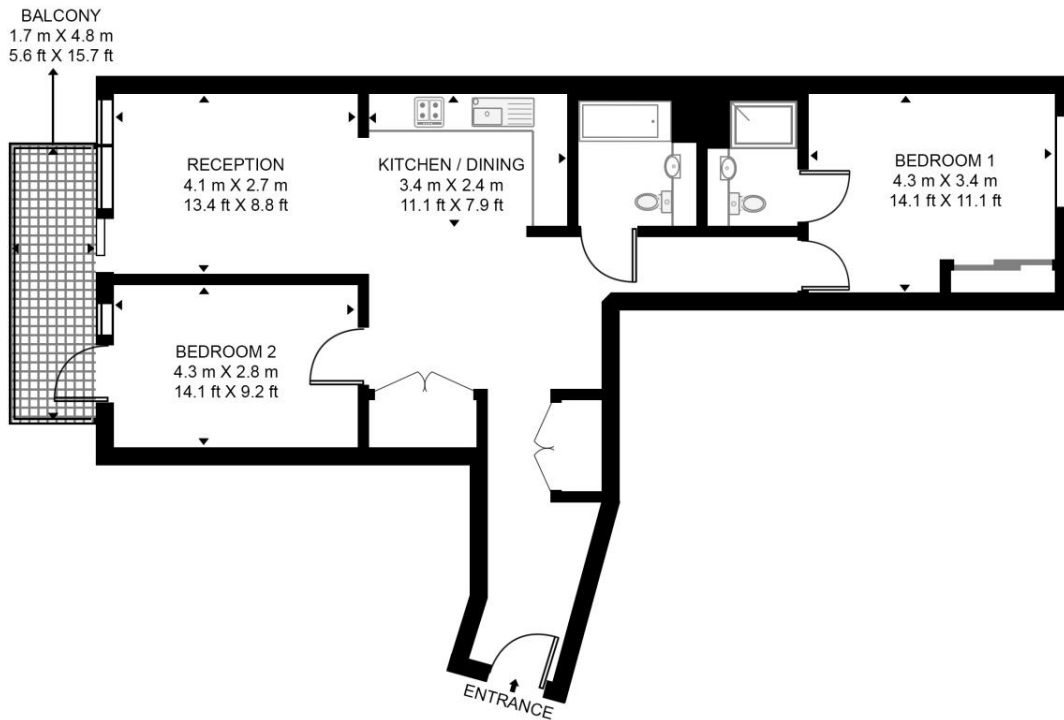
As well as paying the rent, you may also be required to make the following permitted payments. If your tenancy does not qualify as an AST, additional fees may apply. Please visit jll.co.uk/fees for details of fees which may be payable when renting a property.

- 2 Bedroom
- 2 Bathroom
- 3rd Floor
- Balcony
- On-site amenities including cinema, gym and resident's lounge
- 24 hour concierge
- 0.3 miles from Whitechapel Station
- Approx. 911 sq ft (84.6 sq m)
- Furnished
- EPC: B

Floorplan

911 sq ft | 85 sq m

GEORGETTE APARTMENTS, SILK DISTRICT APPROXIMATE GROSS INTERNAL FLOOR AREA 911 SQ.FT (84.6 SQ.M)



THIRD FLOOR

HDVA

This floor plan has been defined by the RICS Code of Measurement. This floor plan and all others are for approximate representative purposes only and upon usage is agreed to as such by the client.

WWW: hdvirtualart.com | TEL: 0203.974.1567 | EMAIL: info@hdvirtualart.com

City
25 Walbrook The Walbrook
Building,
London EC4N 8AF
+4420 7337 4000

Urban living, your way.

jll.co.uk/residential

© 2019 Jones Lang LaSalle IP, Inc. All rights reserved. All information contained herein is from sources deemed reliable; however, no representation or warranty is made to the accuracy thereof.

