



Glasshouse Gardens, London E20

Asking price £690,000 Leasehold







Description

Newly available and ultra modern 9th floor 2 double bedroom 2 bathroom apartment in one of Stratford City's most sought after developments, Glasshouse Gardens E20.

Situated on the ninth floor and comprising of approximately 775 square feet, the property boasts an open kitchen/living area with integrated appliances, floor-to-ceiling-windows allowing plenty of light, private balcony overlooking the iconic Olympic legacy landmarks, two double bedrooms with fitted wardrobes and two bathrooms (including an en suite).

The development is directly opposite the amenities of Westfield Shopping Centre and a short walk from Stratford Underground Station. Residents further benefit from a 24hr concierge service with secure parcel delivery system and cold store for groceries delivery. Secure intercom entry, lift access and close to local amenities.

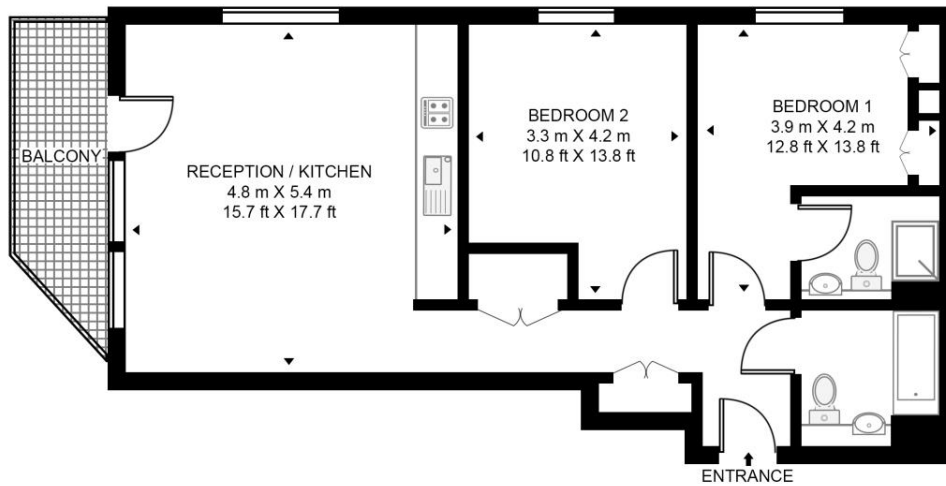
- 2 Bedrooms
- 2 Bathrooms
- 9th Floor modern apartment
- 24hr Concierge service
- Lift access
- Private balcony
- Communal landscaped gardens
- High speed broadband
- Close to Stratford Underground Station
- Tenure: Leasehold

Floorplan

775 sq ft | 72 sq m

CASSIA POINT, GLASSHOUSE GARDENS

APPROXIMATE GROSS INTERNAL FLOOR AREA 775 SQ.FT (72 SQ.M)



NINTH FLOOR



This floor plan has been defined by the RICS Code of Measurement. This floor plan and all others are for approximate representative purposes only and upon usage is agreed to as such by the client.
WWW: hdvirtualart.com | TEL: 0203.974.1567 | EMAIL: info@hdvirtualart.com

Stratford
5 Station Street,
London E15 1DA
+4420 3147 1500
Lettingsstratford@eu.jll.com

Urban living, your way.

jll.co.uk/residential

© 2019 Jones Lang LaSalle IP, Inc. All rights reserved. All information contained herein is from sources deemed reliable; however, no representation or warranty is made to the accuracy thereof.

