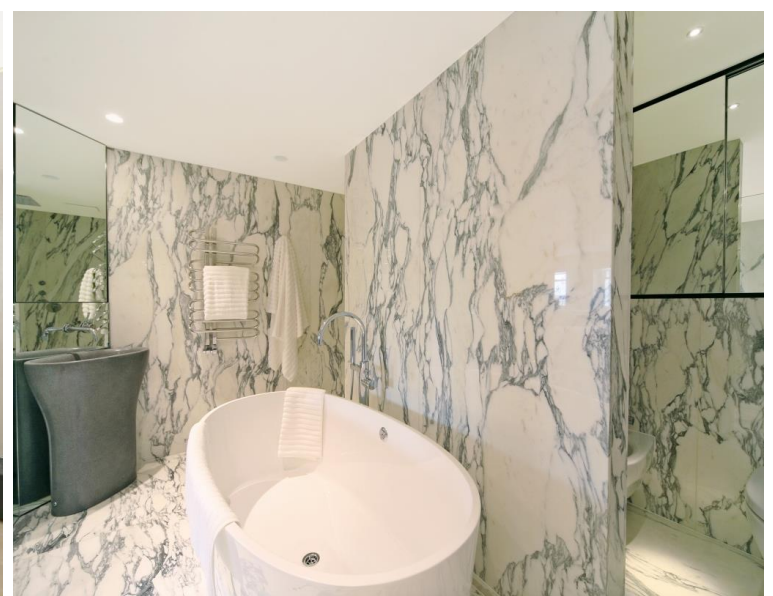
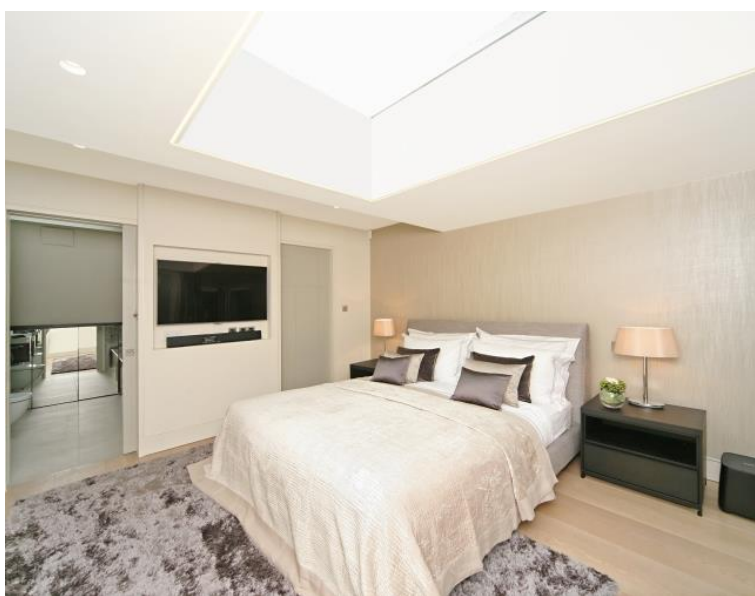




## Princes Gate, London SW7

Price £6,500 per week - Furnished









## Description

A truly spectacular penthouse apartment (with direct lift access) in this newly renovated building in Princes Gate. The property comprises master bedroom with en suite bathroom and walk-in wardrobe, second double bedroom with en suite bathroom, two further double bedrooms with en suite shower rooms, guest cloakroom, two reception rooms and a fully fitted, eat-in kitchen. The apartment has been refurbished and interior designed to the highest of standards and further benefits from excellent storage, air conditioning, an integrated sound system, a caretaker and a roof terrace offering amazing views over Princes Gardens.

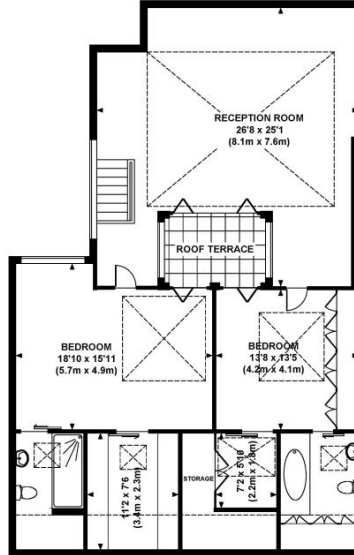
As well as paying the rent, you may also be required to make some additional permitted payments. Please visit [jll.co.uk/fees](http://jll.co.uk/fees) for details of fees which may be payable when renting a property. If your tenancy does not qualify as an AST, additional fees may apply.

- 4 Double bedrooms
- 2 Bathrooms (en suite)
- 2 Shower rooms (en suite)
- Guest cloakroom
- 2 Reception rooms
- Eat-in kitchen
- Third & fourth floor
- Direct lift access
- Roof terrace
- Caretaker

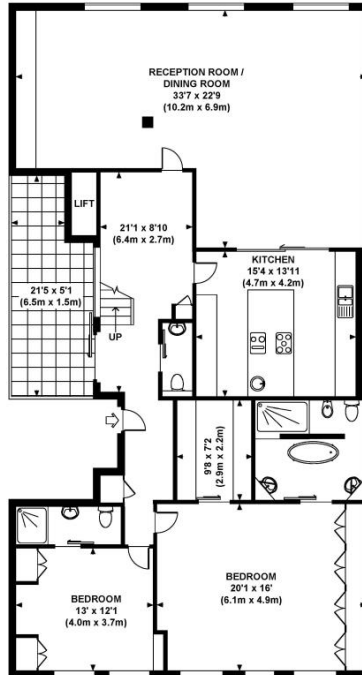
# Floorplan

3,300 sq ft | 307 sq m

Approx. gross internal area  
3167 Sq.Ft. / 294.2 Sq.M.  
3300 Sq.Ft. / 306.6 Sq.M. Inc. Restricted Height Area & Storage



FOURTH FLOOR



THIRD FLOOR



All measurements are approximate and for illustration purposes only as defined by theRICS Code of Measuring Practice © 2013 Dowling Jones Design www.dowlingjones.com 020 7610 9933

Knightsbridge  
174 Brompton Road,  
London SW3 1HP  
+4420 7306 1600  
lettingsknightsbridge@eu.jll.co

*Urban living, your way.*

[jll.co.uk/residential](http://jll.co.uk/residential)

© 2019 Jones Lang LaSalle IP, Inc. All rights reserved. All information contained herein is from sources deemed reliable; however, no representation or warranty is made to the accuracy thereof.

