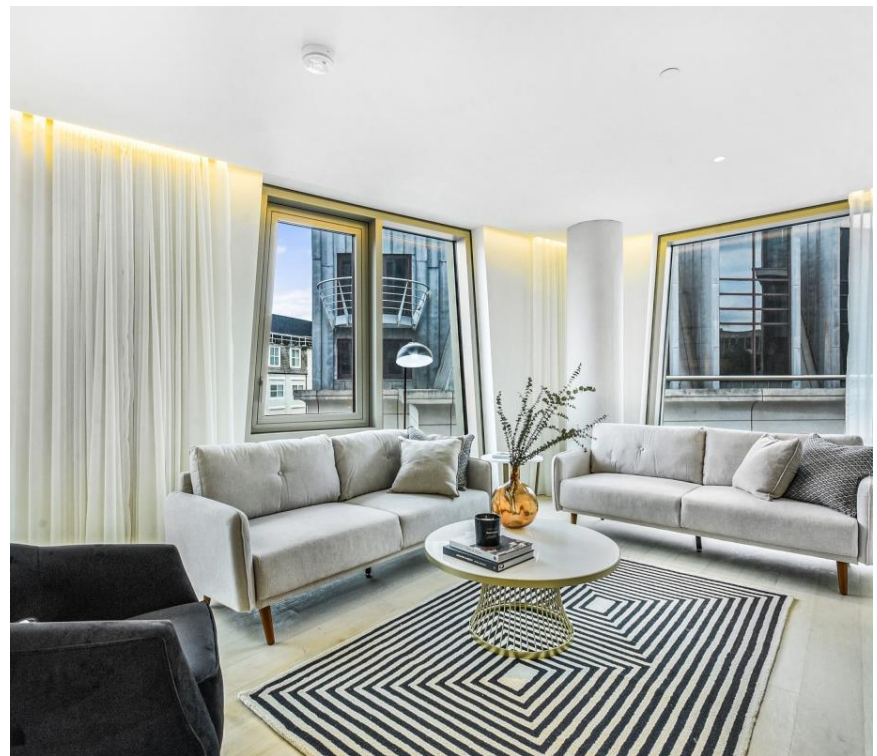




## The Broadway, London SW1H

Price £2,050 per week - Furnished, Unfurnished







# Description

Please note that photos are for indicative purposes only.

This two bedroom apartment offers a contemporary interior living space which is flooded with natural light through the unique diamond window frame. The kitchen is designed with integrated Gaggenau and Miele appliances as well as Bardiglio Italian marble worktop finishes. The bathroom features an Italian marble finish, and Corian bath and basin. Additionally, there are communal gardens connecting each tower on the fourth floor that each resident has access to. The apartment can come on a furnished / unfurnished basis and will be professionally managed by JLL for the duration of any tenancy.

The development benefits from a number of resident facilities as well as a spa which offers two wellness and treatment rooms, a 25m heated indoor pool, a vitality pool, steam room, sauna, gym, personal training studio and changing facilities. Underground parking is available for select apartments by separate negotiation.

As well as paying the rent, you may also be required to make some additional permitted payments. If your tenancy does not qualify as an AST, additional fees may apply. Please visit [jll.co.uk/fees](http://jll.co.uk/fees) for details of fees which may be payable when renting a property.

- 24-hour concierge
- Gym
- Pool/Sauna/Steam room
- Treatment rooms
- Italian marble countertop finishes
- Underfloor heating and comfort cooling

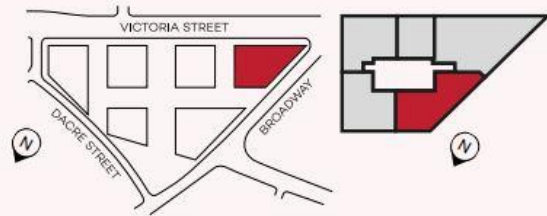


# Floorplan

sq ft | sq m

## PARAGON WEST PW 7.5

- 2 bedroom apartment
- 7th floor
- 117 sq.m / 1,259 sq.ft

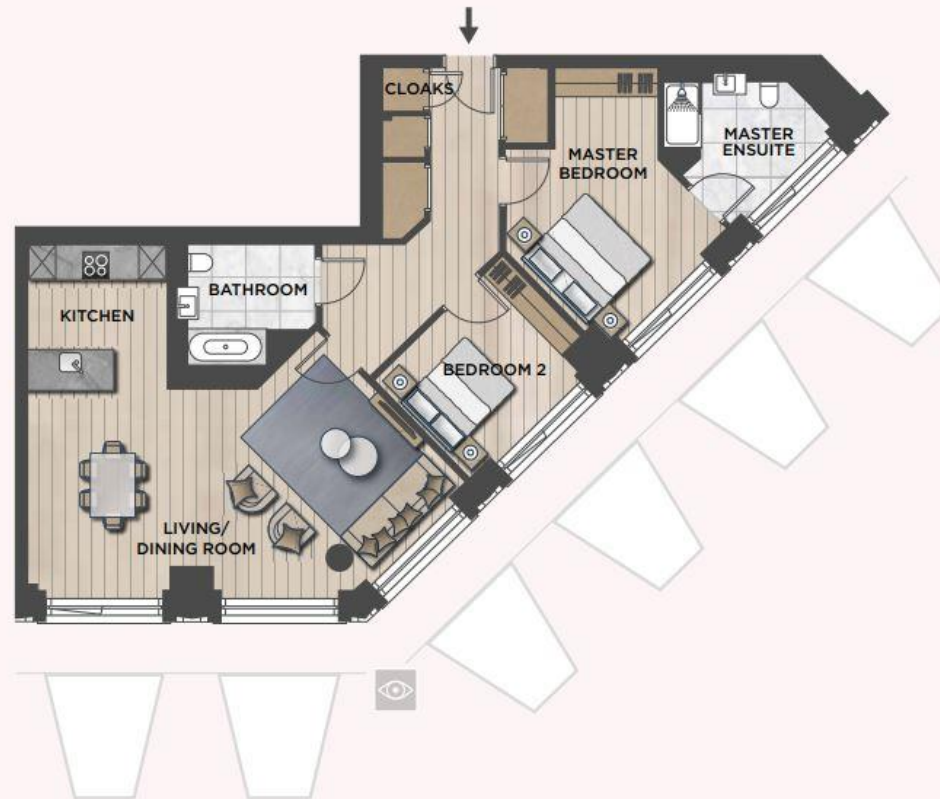


<b>LIVING/DINING/KITCHEN</b>	9.5m x 7.7m	31' 2" x 25' 2"
<b>MASTER BEDROOM</b>	5.9m x 4.5m	19' 4" x 14' 11"
<b>MASTER ENSUITE</b>	3.5m x 3.4m	11' 8" x 11' 4"
<b>BEDROOM 2</b>	3.9m x 3.1m	12' 8" x 10' 3"
<b>BATHROOM</b>	3.0m x 2.8m	9' 10" x 9' 2"
<b>CEILING HEIGHT</b>	2.7m	

DISCLAIMER: Not to scale. All areas are approximate only and you should check with your sales consultant regarding the floorplan and square footage. Computer generated images and predicted views are indicative only. Plans and descriptions are for guidance only and are subject to change.

**NORTHACRE**  
LONDON

THE BROADWAY  
WESTMINSTER



Knightsbridge  
174 Brompton Road,  
London SW3 1HP  
+4420 7306 1600  
lettingsknightsbridge@eu.jll.co

*Urban living, your way.*

[jll.co.uk/residential](http://jll.co.uk/residential)

© 2019 Jones Lang LaSalle IP, Inc. All rights reserved. All information contained herein is from sources deemed reliable; however, no representation or warranty is made to the accuracy thereof.

