



Elvaston Place, London SW7

Price £850 per week - Furnished





Description

A spacious and well presented third floor flat (with lift) in this period building located close to all the amenities of Gloucester Road. The property consists of master bedroom with en suite shower room, second double bedroom, one bathroom, a large reception room and a fully fitted, eat-in kitchen. The flat is light and bright and it is available on a furnished basis. Elvaston Place is ideally located for Gloucester Road and its many shops & restaurants and is within easy walking distance of Gloucester Road station.

As well as paying the rent, you may also be required to make some additional permitted payments. Please visit jll.co.uk/fees for details of fees which may be payable when renting a property. If your tenancy does not qualify as an AST, additional fees may apply.

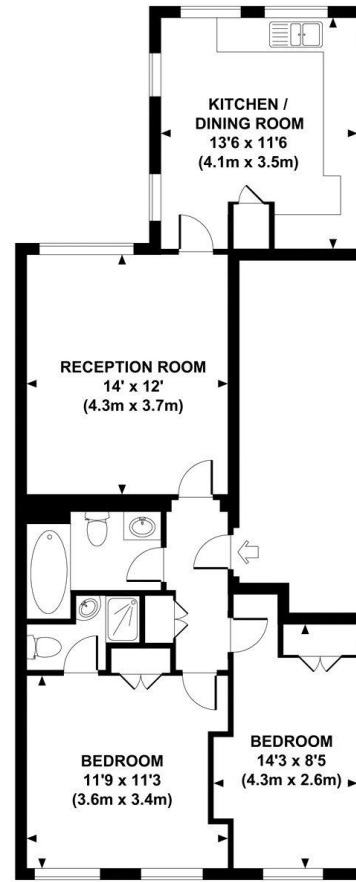
- Furnished flat
- 2 Double bedrooms
- 1 Bathroom
- 1 Shower room (en suite)
- Reception room
- Eat-in kitchen
- Third floor
- Lift
- Approx. 691 sq ft (64 sq m)
- EPC: C



Floorplan

691 sq ft | 64 sq m

Approx. gross internal area
691 Sq.Ft. / 64.2 Sq.M.



THIRD FLOOR

CPD All measurements are approximate and for illustration purposes only as defined by the RICS Code of Measuring Practice © 2013 Dowling Jones Design www.dowlingjones.com 020 7610 9933

Knightsbridge

174 Brompton Road,
London SW3 1HP
+4420 7306 1600

lettingsknightsbridge@eu.jll.co

Urban living, your way.

jll.co.uk/residential

© 2019 Jones Lang LaSalle IP, Inc. All rights reserved. All information contained herein is from sources deemed reliable; however, no representation or warranty is made to the accuracy thereof.

