



**Cam Road, London E15**  
Guide price £400,000 Leasehold







## Description

Opportunity to purchase a 2 bedroom apartment within one of Stratford's popular developments, Burford Wharf Apartments, E15

Situated on the fifth floor and comprising of approximately 788 square feet, the property boasts an open-plan kitchen/living area with integrated appliances, private balcony, double bedrooms with a separate family bathroom.

The development is located just a short walk from Stratford International DLR and Stratford Underground Station. Residents further benefit from a concierge service, private balcony with views across London, and is close to local amenities.

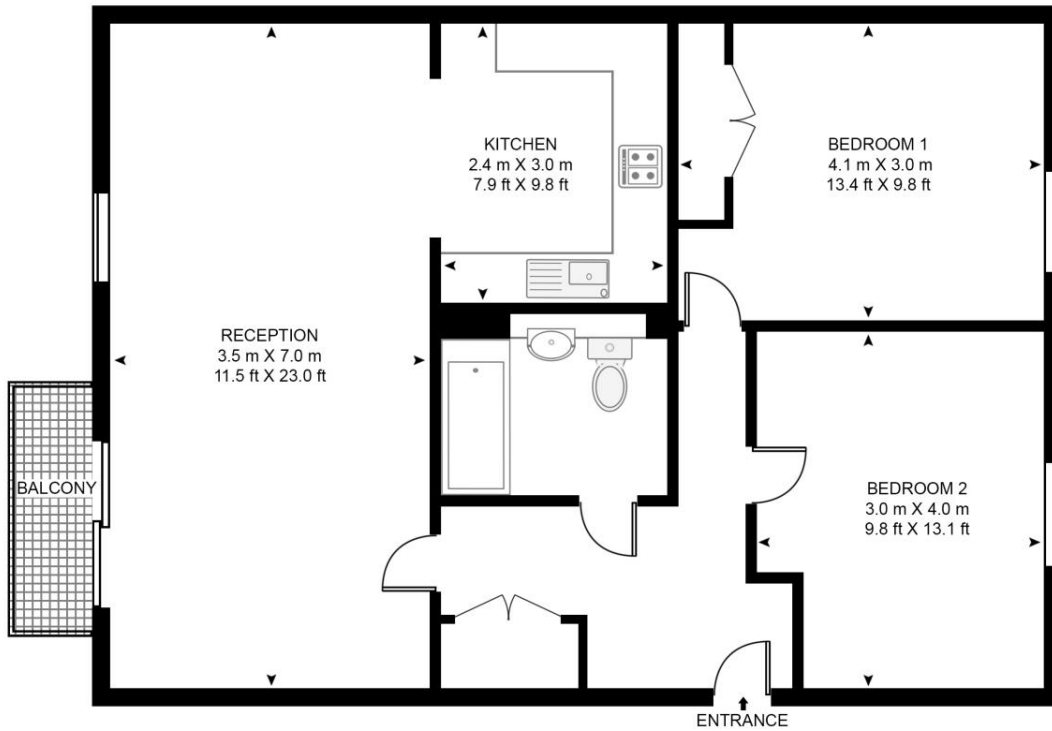
- 2 Bedrooms - 788 sq ft (73.2 sq m)
- 1 Bathroom
- 5th floor (lift access)
- Secure development
- Concierge
- Open plan kitchen / reception room
- Short walk to Stratford Underground Station
- EWS1 Compliant
- EPC Rating: C

# Floorplan

788 sq ft | 73 sq m

## BURFORD WHARF

APPROXIMATE GROSS INTERNAL FLOOR AREA 788 SQ.FT (73.2 SQ.M)



FIFTH FLOOR

**HDVA**

This floor plan has been defined by the RICS Code of Measurement. This floor plan and all others are for approximate representative purposes only and upon usage is agreed to as such by the client.

WWW: [hdvirtualart.com](http://hdvirtualart.com) | TEL: 0203.974.1567 | EMAIL: [info@hdvirtualart.com](mailto:info@hdvirtualart.com)

Stratford  
5 Station Street,  
London E15 1DA  
+4420 3147 1500  
[Lettingsstratford@eu.jll.com](mailto:Lettingsstratford@eu.jll.com)

*Urban living, your way.*

[jll.co.uk/residential](http://jll.co.uk/residential)

© 2019 Jones Lang LaSalle IP, Inc. All rights reserved. All information contained herein is from sources deemed reliable; however, no representation or warranty is made to the accuracy thereof.

