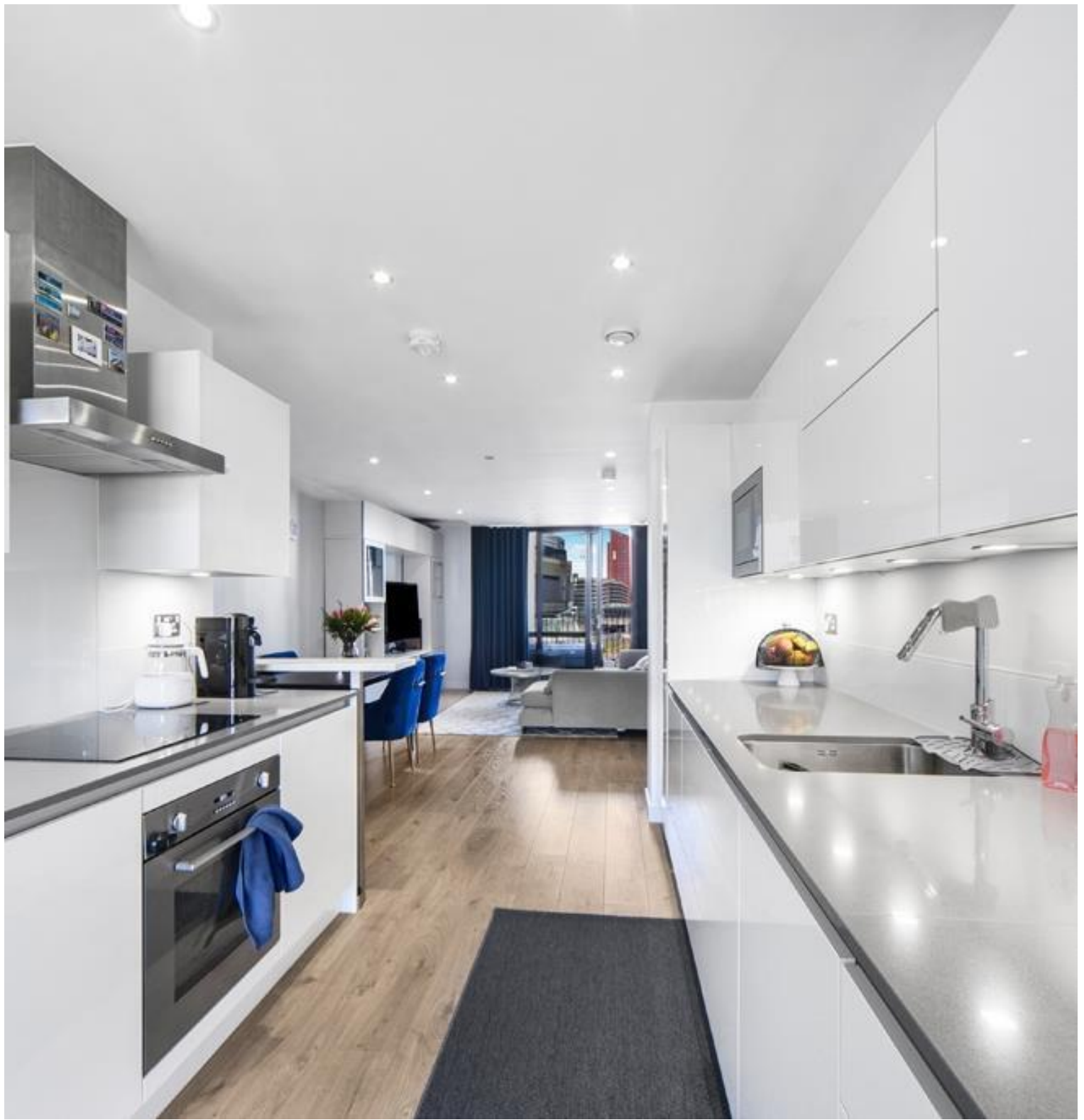


Forrester Way, London E15

Asking price £750,000 Leasehold







Description

Opportunity to purchase this spacious 3 double bedroom apartment located on the 3rd floor within one of Stratford's most sought after locations, New Gardens Quarter, E15.

This property comprising of approximately 1003 square feet, offering a high specification open-plan kitchen/living space, 3 double bedrooms with built-in wardrobes, 2 private balconies and two bathroom (including an en suite). Property further benefits a private parking space.

Located next to Queen Elizabeth park boasting a beautifully 2-acre landscaped garden square, the property further benefits from easy access to Westfield Stratford City, short walk to Stratford Underground Station, concierge service, residential gymnasium, underfloor heating throughout and bicycle storage.

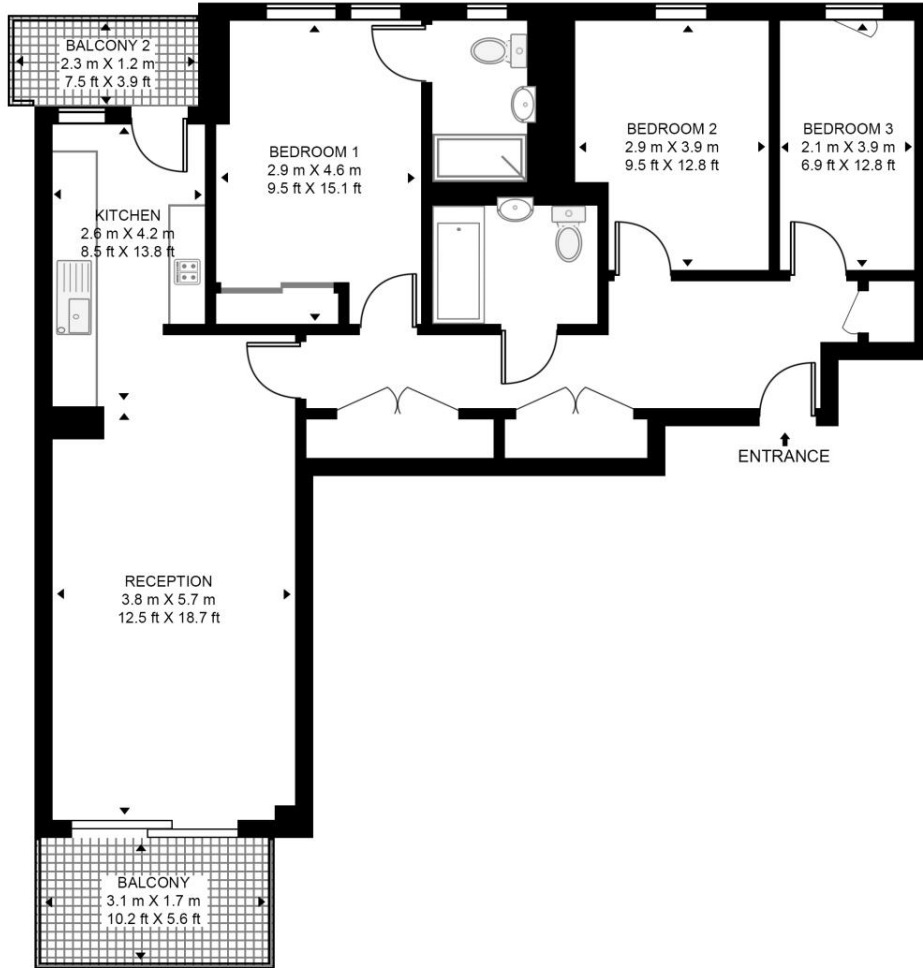
- 3 bedroom
- 2 bathroom
- 24hr Concierge service
- Two balconies
- Residential gymnasium
- Private parking space
- Located next to Queen Elizabeth Park
- Views overlooking communal landscaped gardens
- Underfloor heating throughout
- Close to Stratford Underground Station

Floorplan

1,003 sq ft | 93 sq m

HAWTHORN HOUSE

APPROXIMATE GROSS INTERNAL FLOOR AREA 1003 SQ.FT (93.2 SQ.M)



THIRD FLOOR



This floor plan has been defined by the RICS Code of Measurement. This floor plan and all others are for approximate representative purposes only and upon usage is agreed to as such by the client.
WWW: hdvirtualart.com | TEL: 0203.974.1567 | EMAIL: info@hdvirtualart.com

Stratford
5 Station Street,
London E15 1DA
+4420 3147 1500
Lettingsstratford@eu.jll.com

Urban living, your way.

jll.co.uk/residential

© 2019 Jones Lang LaSalle IP, Inc. All rights reserved. All information contained herein is from sources deemed reliable; however, no representation or warranty is made to the accuracy thereof.

