



**High Street, London E15**  
Asking price £450,000 Leasehold









## Description

Great opportunity to purchase this spacious 2-bedroom, 1-bathroom duplex apartment within the sought-after River Heights Development on Stratford High Street.

The property is situated on the ground and first floor, comprising of an open-plan living area/kitchen with integrated appliances, double-height ceiling and huge windows allowing plenty of light, downstairs w/c, private terrace overlooking the peaceful canal, upstairs is two bedrooms (fitted wardrobes in the master) and one contemporary bathroom.

Residents benefit from access to a 24-hour concierge service, residents-gym and a landscaped rooftop garden.

high speed broadband and close to local amenities such as Tesco Express and Westfields in Stratford City. River Heights is perfectly placed on Stratford High Street which is within walking distance to Pudding Mill Lane and Stratford High Street DLR station and Stratford Station, which is now one of London's busiest and well-connected stations.

One off-street secure allocated parking space is included.

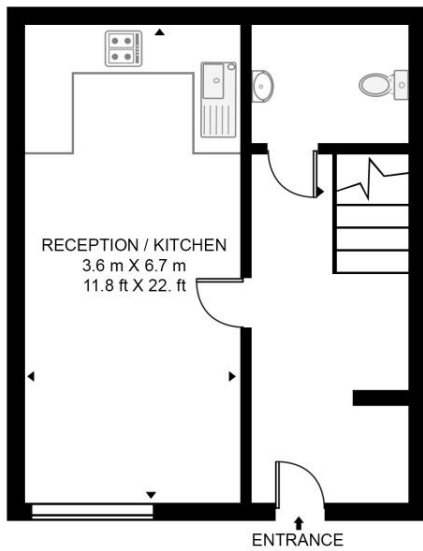
- Two bedrooms
- One bathroom
- Approx. 856sq. ft (79.6sq. m)
- Allocated parking space
- 24hr Concierge
- Residents Gym
- Roof Terrace
- 0.4 miles to Pudding Mill Lane DLR
- EPC Rating B

# Floorplan

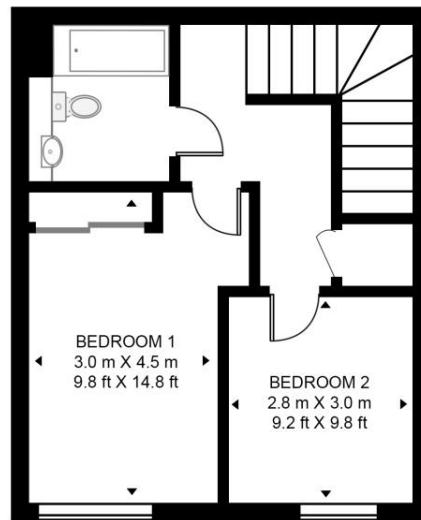
856 sq ft | 80 sq m

## RIVER HEIGHTS

APPROXIMATE GROSS INTERNAL FLOOR AREA 856 SQ.FT (79.6 SQ.M)



GROUND FLOOR



FIRST FLOOR



This floor plan has been defined by the RICS Code of Measurement. This floor plan and all others are for approximate representative purposes only and upon usage is agreed to as such by the client.

WWW: [hdvirtualart.com](http://hdvirtualart.com) | TEL: 0203.974.1567 | EMAIL: [info@hdvirtualart.com](mailto:info@hdvirtualart.com)

Stratford  
5 Station Street,  
London E15 1DA  
+4420 3147 1500  
[salesstratford@eu.jll.com](mailto:salesstratford@eu.jll.com)

*Urban living, your way.*

[jll.co.uk/residential](http://jll.co.uk/residential)

© 2019 Jones Lang LaSalle IP, Inc. All rights reserved. All information contained herein is from sources deemed reliable; however, no representation or warranty is made to the accuracy thereof.

