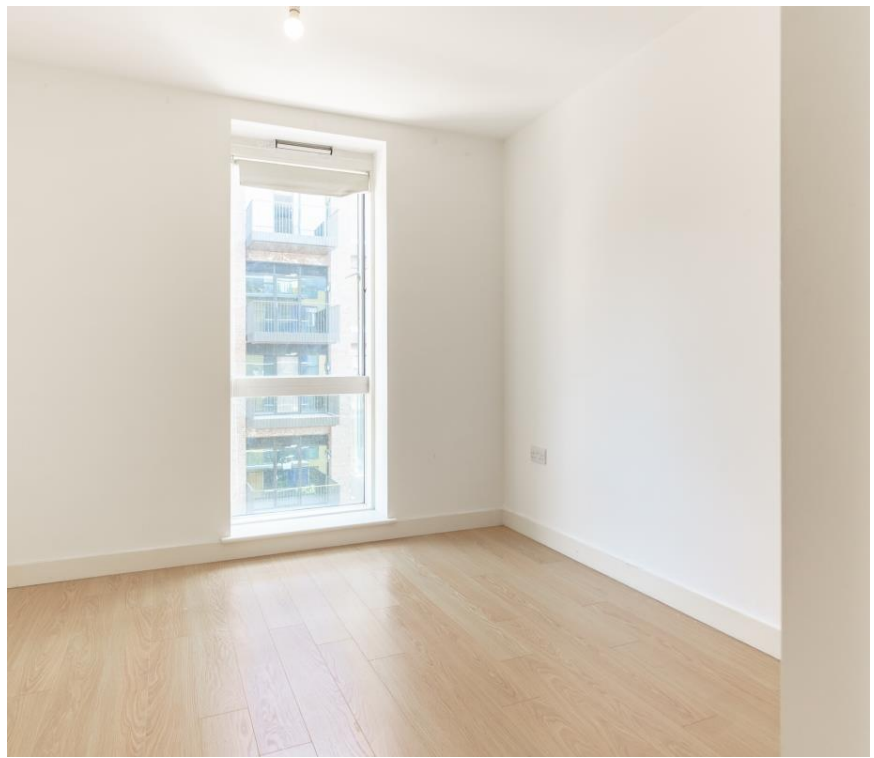


## Conington Road, London SE13

Guide price £300,000 Leasehold





# Description

Located on the 5th floor, is this smart one bedroom apartment, within easy walking distance to both Greenwich and Blackheath.

The property is only a stone throw from both Lewisham and Elverson DLR and main line station. The property offers one double bedroom, family bathroom with shower and a modern, open plan kitchen leading to a spacious lounge with a large balcony.

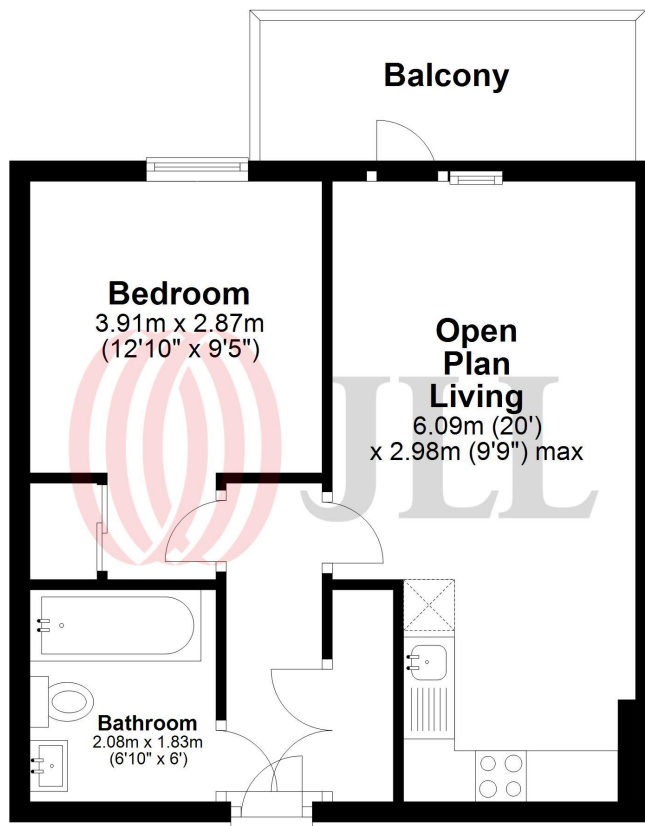
The property is offered to the market with no onward chain, early viewings are highly recommended.

- Modern Apartment
- One Bedroom
- Balcony
- Close to DLR & Mainline Stations
- Gym & Concierge
- Walking distance to Greenwich and Blackheath
- No onward chain
- EPC: B



## Fifth Floor

Approx. 36.2 sq. metres (390.2 sq. feet)



Total area: approx. 36.2 sq. metres (390.2 sq. feet)

Floor Plan measurements are approximate and are for illustrative purposes only. While we do not doubt the floor plans accuracy, we make no guarantee, warranty or representation as to the accuracy and completeness of the floor plan.

Plan produced using PlanUp.