



Little Portland Street, London W1W

Price £775 per week - Furnished





Description

A stunning second floor apartment (with lift) in the highly anticipated building of Morley House, developed by the Crown Estate and interior designed by TH2 Designs. The apartment consists of one double bedroom, one bathroom, reception room with open plan kitchen and a utility room.

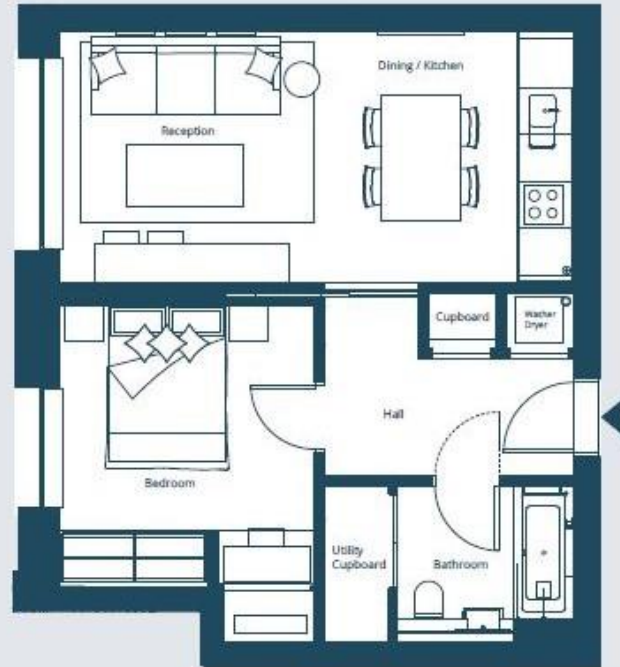
As well as paying the rent, you may also be required to make some additional permitted payments. Please visit jll.co.uk/fees for details of fees which may be payable when renting a property. If your tenancy does not qualify as an AST, additional fees may apply.

- One double bedroom
- One bathroom
- Reception room
- Open plan kitchen
- Utility room
- Second floor
- Lift
- Interior designed by TH2 Designs
- Residents Cinema room
- Residents Lounge



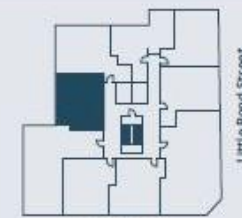
Floorplan

539 sq ft | 50 sq m



Total Area
50.0 Sq m
538.6 Sq ft

Second
Floor



Regent Street

Mayfair and Marylebone
JLL, 30 Warwick Street,
London W1B 5NH
+44 207 399 5550
tenancymanagement@eu.jll.c

Urban living, your way.

jll.co.uk/residential

© 2019 Jones Lang LaSalle IP, Inc. All rights reserved. All information contained herein is from sources deemed reliable; however, no representation or warranty is made to the accuracy thereof.

