



## Kings Terrace, London NW1

Price £615 per week - Furnished







## Description

A fully furnished 2 bed apartment situated moments from the cultural hub of Camden Town, NW1.

Situated on the on the 3rd floor, this spacious 2 bedroom apartment offers an abundance of space and comprises two double bedrooms each with large fitted wardrobes, two contemporary bathrooms, fully fitted open plan kitchen, wood flooring and excellent storage space.

The apartment is approximately 0.3 miles from Camden Town station and approximately 0.1 mile from Mornington Crescent station. Camden is renowned for it's live music, street food and markets, and shopping venues.

As well as paying the rent, you may also be required to make the following permitted payments. If your tenancy does not qualify as an AST, additional fees may apply. Please visit [jll.co.uk/fees](http://jll.co.uk/fees) for details of fees which may be payable when renting a property.

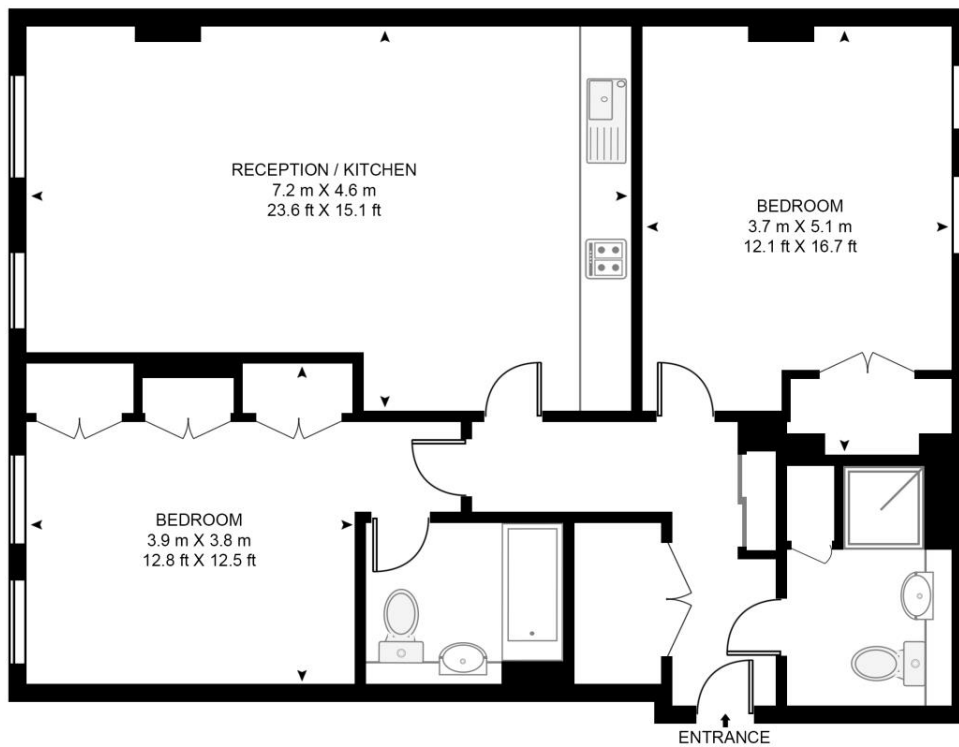
- 2 Bedrooms
- 2 Bathrooms
- 3rd floor
- Large fitted wardrobes
- Wooden flooring
- Approx. 925 sq ft (86 sq m)
- 0.3 miles from Camden Town station
- Furnished
- EPC: B

# Floorplan

925 sq ft | 86 sq m

## KINGS APARTMENTS

APPROXIMATE GROSS INTERNAL FLOOR AREA 925 SQ.FT (86 SQ.M)



### THIRD FLOOR



This floor plan has been defined by the RICS Code of Measurement. This floor plan and all others are for approximate representative purposes only and upon usage is agreed to as such by the client.  
WWW: [hdvirtualart.com](http://hdvirtualart.com) | TEL: 0203.974.1567 | EMAIL: [info@hdvirtualart.com](mailto:info@hdvirtualart.com)

City  
25 Walbrook The Walbrook  
Building,  
London EC4N 8AF  
+4420 7337 4000

*Urban living, your way.*

[jll.co.uk/residential](http://jll.co.uk/residential)

© 2019 Jones Lang LaSalle IP, Inc. All rights reserved. All information contained herein is from sources deemed reliable; however, no representation or warranty is made to the accuracy thereof.

