



Buckingham Gate, London SW1E

Price £975 per week - Furnished





Description

A beautifully presented twelfth floor apartment which has been interior designed throughout by TH2 Designs with spectacular north easterly views towards the river and the City of London. Accommodation comprises of one double bedroom, one bathroom, fully fitted kitchen with seating area adjoining a stylishly decorated reception room. Fittings throughout include wood floors and marble back drops with floor to ceiling glass windows providing natural light and city views. Underground parking is available by separate negotiation.

Please note that due to building works in the area, the skyline views from the apartments may have changed from those shown in the marketing pictures.

As well as paying the rent, you may also be required to make permitted payments. Please visit jll.co.uk/fees for details of fees which may be payable when renting a property. If your tenancy does not qualify as an AST, additional fees may apply.

- One double bedroom
- One bathroom
- Reception room
- Open plan kitchen
- Sixth floor
- Lift
- 24 hour concierge
- Furnished
- Approx. 700 sq ft (68 sq m)
- EPC: B



Floorplan

sq ft | sq m

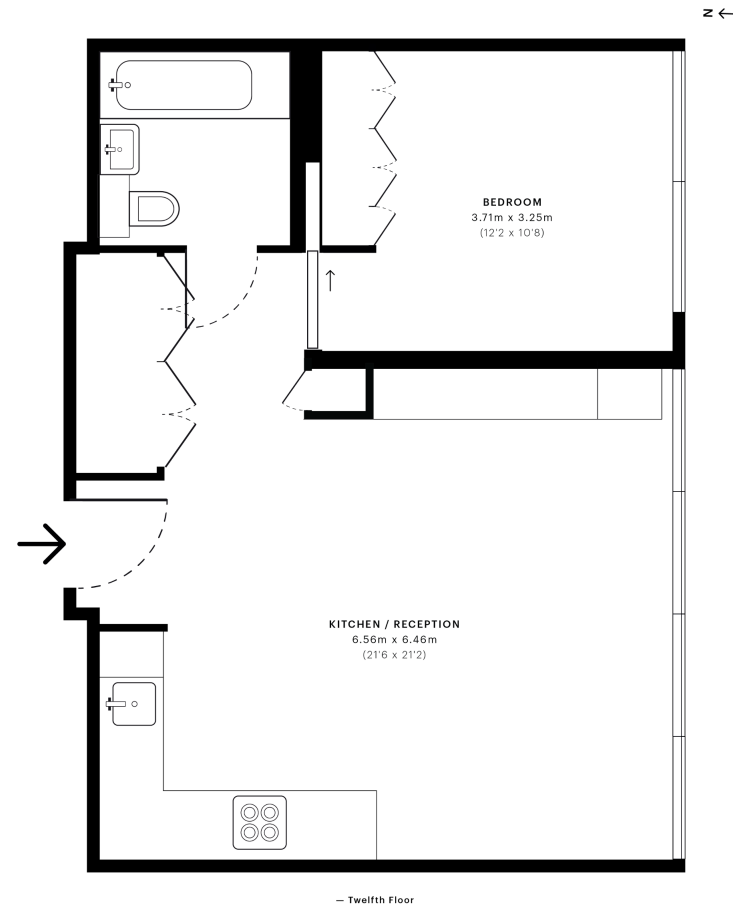


The Tower, Buckingham Green, SW1E

CAPTURE DATE
30/01/2019

LASER SCAN POINTS
13,866,153

GROSS INTERNAL AREA
54.98 Sqm / 591.80 Sqft



Knightsbridge
174 Brompton Road,
London SW3 1HP
+4420 7306 1600
lettingsknightsbridge@eu.jll.co

Urban living, your way.

jll.co.uk/residential

© 2019 Jones Lang LaSalle IP, Inc. All rights reserved. All information contained herein is from sources deemed reliable; however, no representation or warranty is made to the accuracy thereof.

