

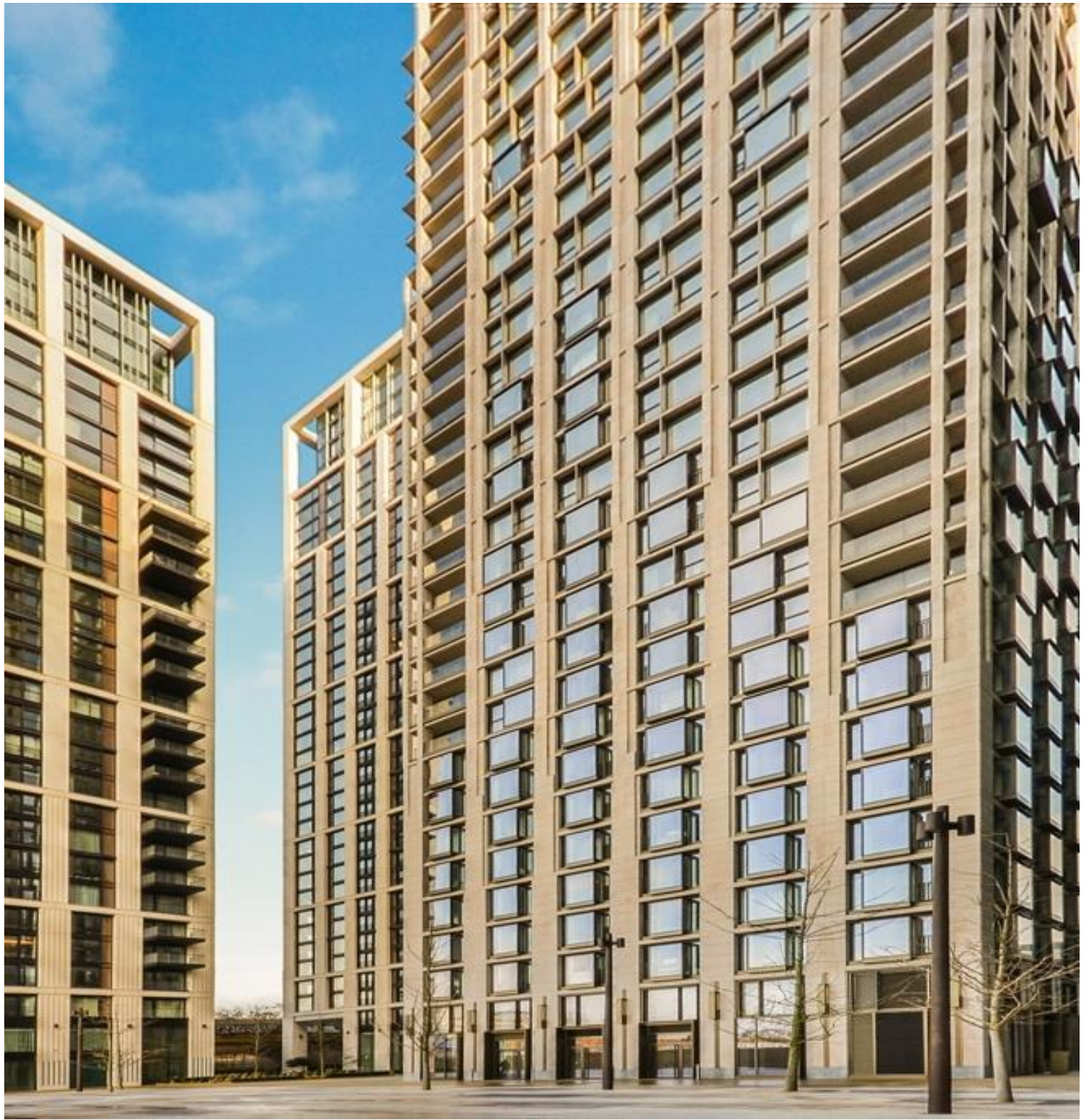


## Casson Square, London SE1

Price £685 per week - Furnished











## Description

JLL are delighted to present a furnished 16th floor studio suite in 8 Casson Square.

This spacious studio apartment comprises a well sized living room with a fully fitted kitchen to include Miele and Siemens appliances, partitioned sleeping area with large fitted wardrobes, contemporary shower room, wood flooring and excellent storage space. The property has a high specification throughout featuring comfort cooling, underfloor heating and smart home technology.

The development benefits from top of the range amenities which include an on-site gym, swimming pool with spa, exclusive resident's lounge and 24-hour concierge. 8 Casson Square is in the heart of Southbank and on the doorstep of Waterloo Station (0.2 miles) and moments from the iconic London Eye. The City of London is within easy reach as is London's famous West End.

As well as paying the rent, you may also be required to make the following permitted payments. If your tenancy does not qualify as an AST, additional fees may apply. Please visit [jll.co.uk/fees](http://jll.co.uk/fees) for details of fees which may be payable when renting a property.

- Studio
- 1 Bathroom
- 16th floor
- Balcony with views towards The Shard
- Underfloor heating
- 24 hour concierge
- On-site leisure facilities including spa, cinema and gym
- 0.2 miles from Waterloo Station
- Approx. 489 sq ft (45 sq m)
- Furnished

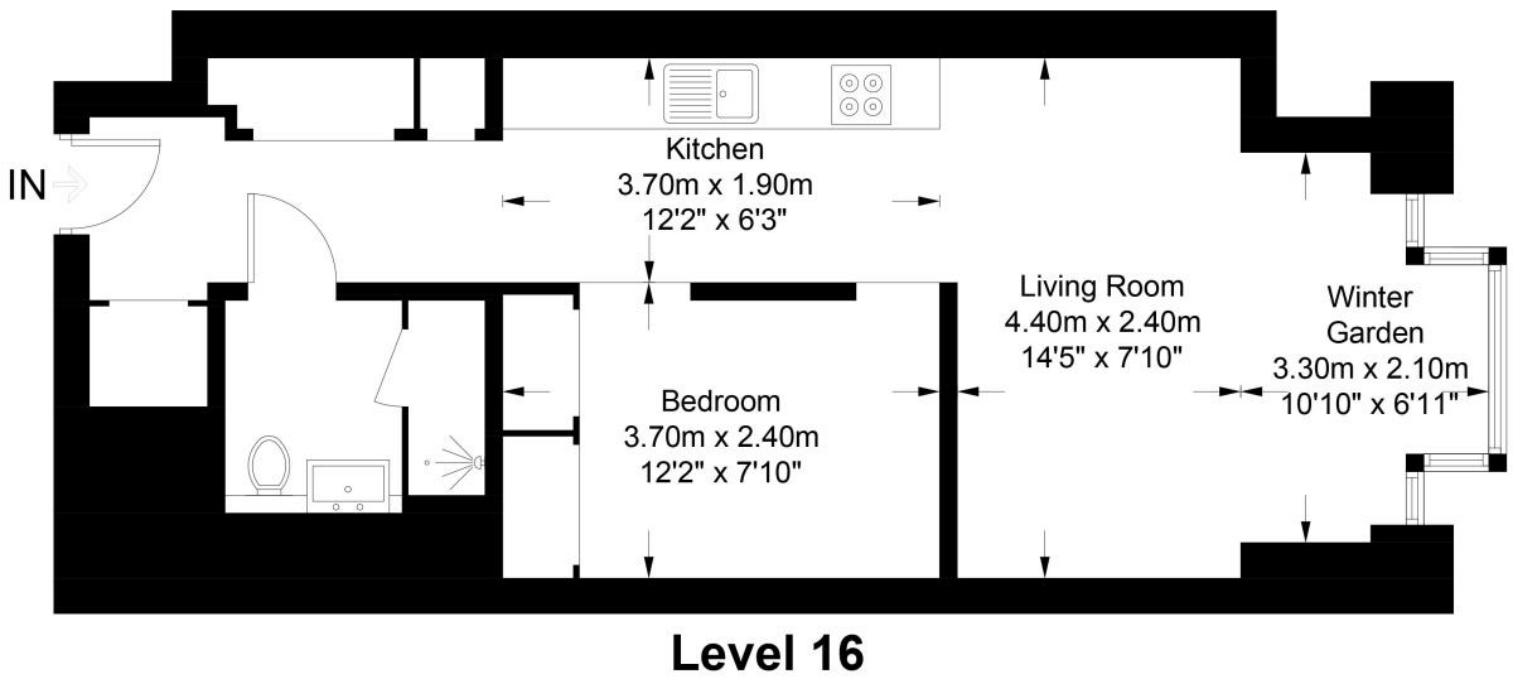
# Floorplan

489 sq ft | 45 sq m



## Casson Square, SE1

Approximate Gross Internal Area = 489 sq ft / 45 sq m



This plan is for layout guidance only. Not drawn to scale unless stated. Windows and door openings are approximate. Whilst every care is taken in the preparation of this plan, please check all dimensions, shapes and compass bearings before making any decisions reliant upon them. (ID796877)

City  
25 Walbrook The Walbrook  
Building,  
London EC4N 8AF  
+4420 7337 4000

*Urban living, your way.*

[jll.co.uk/residential](http://jll.co.uk/residential)

© 2019 Jones Lang LaSalle IP, Inc. All rights reserved. All information contained herein is from sources deemed reliable; however, no representation or warranty is made to the accuracy thereof.

