



## Buckingham Gate, London SW1E

Price £975 per week - Furnished



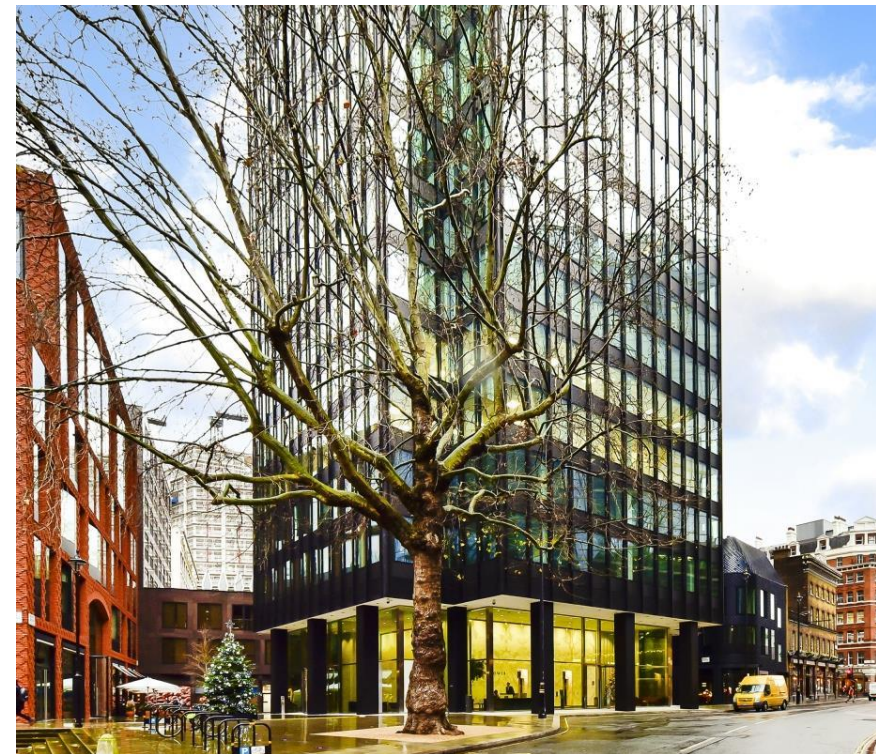


# Description

A beautifully presented eighth floor apartment which has been interior designed throughout by TH2 Designs with a spectacular easterly aspect. Accommodation comprises of one double bedroom, bathroom, fully fitted kitchen with dining area adjoining a stylishly decorated reception. Fittings throughout include wood floors and marble back drops with floor to ceiling glass windows providing natural light and city views. Underground parking is available by separate negotiation.

Please note that due to building works in the area, the skyline views from the apartments may have changed from those shown in the marketing pictures.

As well as paying the rent, you may also be required to make permitted payments. Please visit [jll.co.uk/fees](http://jll.co.uk/fees) for details of fees which may be payable when renting a property. If your tenancy does not qualify as an AST, additional fees may apply.

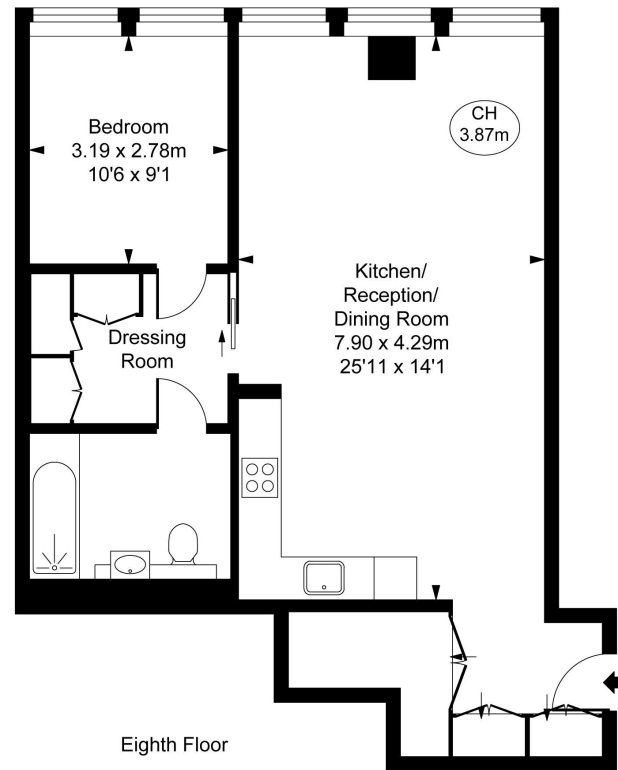


- One double bedroom with walk in wardrobe
- One bathroom
- Reception room
- Open plan kitchen
- Eighth floor
- Lift
- 24 hour concierge
- Underground parking by separate negotiation
- Furnished
- Approx. 700 sq ft (65 sq m)

The Tower,  
Buckingham Green,  
Buckingham Gate, SW1E

Approximate Gross Internal Area  
64.10 sq m / 690 sq ft

( CH = Ceiling Heights )



This plan is not to scale. It is for guidance and not for valuation purposes.  
All measurements and areas are approximate only, and have been prepared in accordance with the current edition of the RICS Code of Measuring Practice.  
© Fulham Performance

## Knightsbridge

174 Brompton Road,  
London SW3 1HP  
+4420 7306 1600

lettingsknightsbridge@eu.jll.co

*Urban living, your way.*

[jll.co.uk/residential](http://jll.co.uk/residential)

© 2019 Jones Lang LaSalle IP, Inc. All rights reserved. All information contained herein is from sources deemed reliable; however, no representation or warranty is made to the accuracy thereof.

